

Product Datasheet

ZEB1 Antibody - BSA Free NBP1-68930

Unit Size: 100 ul

Store at 4C short term. Aliquot and store at -20C long term. Avoid freeze-thaw cycles.

www.novusbio.com



technical@novusbio.com

Reviews: 1

Protocols, Publications, Related Products, Reviews, Research Tools and Images at:
www.novusbio.com/NBP1-68930

Updated 2/21/2025 v.20.1

**Earn rewards for product
reviews and publications.**

Submit a publication at www.novusbio.com/publications

Submit a review at www.novusbio.com/reviews/destination/NBP1-68930



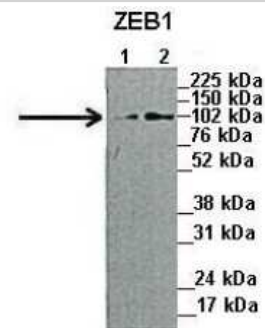
NBP1-68930

ZEB1 Antibody - BSA Free

Product Information	
Unit Size	100 ul
Concentration	0.5 mg/ml
Storage	Store at 4C short term. Aliquot and store at -20C long term. Avoid freeze-thaw cycles.
Clonality	Polyclonal
Preservative	0.09% Sodium Azide
Isotype	IgG
Purity	Affinity purified
Buffer	PBS, 2% Sucrose
Target Molecular Weight	124 kDa
Product Description	
Description	The addition of 50% glycerol is optional for those storing this antibody at -20C and not aliquoting smaller units. However, please note that glycerol may interrupt some downstream antibody applications and should be added with caution.
Host	Rabbit
Gene ID	6935
Gene Symbol	ZEB1
Species	Human
Marker	Mesenchymal Cells Marker
Immunogen	Synthetic peptides corresponding to ZEB1 (zinc finger E-box binding homeobox 1) The peptide sequence was selected from the N terminal of ZEB1. Peptide sequence NPRRNNVTNYNTVVETNSDSDDEDKLVHIVEEESVTDAADCEGVPEDDLPT. The peptide sequence for this immunogen was taken from within the described region.
Product Application Details	
Applications	Western Blot, Immunohistochemistry, Immunohistochemistry-Paraffin
Recommended Dilutions	Western Blot 1.0 ug/ml, Immunohistochemistry, Immunohistochemistry-Paraffin

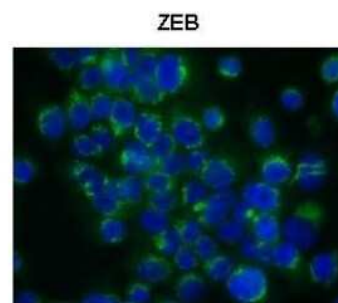
Images

Western Blot: ZEB1 Antibody [NBP1-68930] - Lanes: 1. 45ug capan1 cell lysate 2. 45 ug HPAF cell lysate Primary, Antibody Dilution: 1 : 1000 Secondary Antibody: Anti-Rabbit HRP Secondary, Antibody Dilution: 1 : 5000 Gene name: ZEB1.



See Immunoblot 2 Data and Customer Feedback for more information

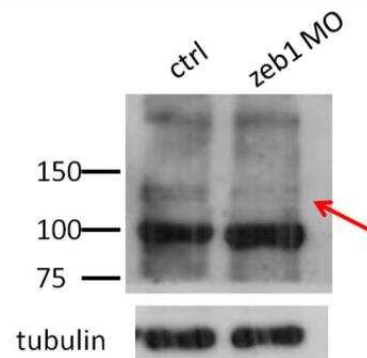
Immunohistochemistry: ZEB1 Antibody [NBP1-68930] - Human Capan1 cells (Pancreatic cancer cell line) Primary Antibody Dilution: 1 : 300 Secondary Antibody: Anti-rabbit-AlexaFluor-488 Secondary Antibody Dilution: 1 : 200 Color/Signal.



Green: ZEB
Blue: DAPI

See IHC 1 Data and Customer Feedback for more information

Western Blot: ZEB1 Antibody [NBP1-68930] - Lane 1: Control, Lane 2: ZEB1 morphants. Upper panel: ZEB1 blot; Bottom panel: tubulin blot



Western Blot: ZEB1 Antibody [NBP1-68930] - 293T cells lysate, concentration 0.2-1 ug/ml.





Novus Biologicals USA

10730 E. Briarwood Avenue
Centennial, CO 80112
USA
Phone: 303.730.1950
Toll Free: 1.888.506.6887
Fax: 303.730.1966
nb-customerservice@bio-techne.com

Bio-Techne Canada

21 Canmotor Ave
Toronto, ON M8Z 4E6
Canada
Phone: 905.827.6400
Toll Free: 855.668.8722
Fax: 905.827.6402
canada.inquires@bio-techne.com

Bio-Techne Ltd

19 Barton Lane
Abingdon Science Park
Abingdon, OX14 3NB, United Kingdom
Phone: (44) (0) 1235 529449
Free Phone: 0800 37 34 15
Fax: (44) (0) 1235 533420
info.EMEA@bio-techne.com

General Contact Information

www.novusbio.com
Technical Support: nb-technical@bio-techne.com
Orders: nb-customerservice@bio-techne.com
General: novus@novusbio.com

Products Related to NBP1-68930

HAF008	Goat anti-Rabbit IgG Secondary Antibody [HRP]
NB7160	Goat anti-Rabbit IgG (H+L) Secondary Antibody [HRP]
NBP2-24891	Rabbit IgG Isotype Control
NBP2-13159PEP	ZEB1 Antibody Blocking Peptide

Limitations

This product is for research use only and is not approved for use in humans or in clinical diagnosis. Primary Antibodies are guaranteed for 1 year from date of receipt.

For more information on our 100% guarantee, please visit www.novusbio.com/guarantee

Earn gift cards/discounts by submitting a review: www.novusbio.com/reviews/submit/NBP1-68930

Earn gift cards/discounts by submitting a publication using this product:
www.novusbio.com/publications

