

Product Datasheet

ASGPR1 Antibody (8D7)

NBP1-60150-0.025mg

Unit Size: 0.025 mg

Store at 4C.

www.novusbio.com



technical@novusbio.com

Reviews: 1 **Publications: 11**

Protocols, Publications, Related Products, Reviews, Research Tools and Images at:
www.novusbio.com/NBP1-60150

Updated 3/30/2022 v.20.1

Earn rewards for product reviews and publications.

Submit a publication at www.novusbio.com/publications

Submit a review at www.novusbio.com/reviews/destination/NBP1-60150



NBP1-60150-0.025mg

ASGPR1 Antibody (8D7)

Product Information	
Unit Size	0.025 mg
Concentration	0.1 mg/ml
Storage	Store at 4C.
Clonality	Monoclonal
Clone	8D7
Preservative	0.02% Sodium Azide
Isotype	IgG1
Purity	Protein G purified
Buffer	0.2 um filtered solution in PBS and 0.1% BSA

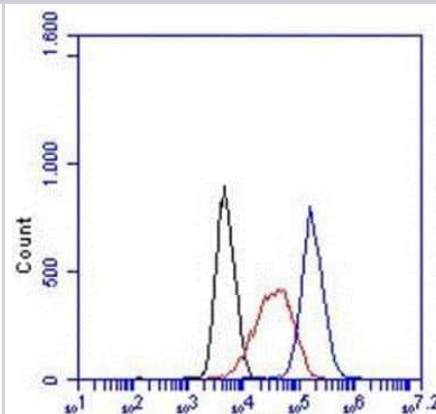
Product Description	
Host	Mouse
Gene ID	432
Gene Symbol	ASGR1
Species	Human, Mouse, Rat
Reactivity Notes	Use in Mouse reported in scientific literature (PMID:33554615).
Immunogen	Crude rat liver membrane extracts

Product Application Details	
Applications	Western Blot, ELISA, Flow Cytometry, Immunocytochemistry/ Immunofluorescence, Immunohistochemistry, Immunohistochemistry-Frozen
Recommended Dilutions	Western Blot 1:100-1:2000, Flow Cytometry 1:10-1:1000, ELISA, Immunohistochemistry 1:10-1:500, Immunocytochemistry/ Immunofluorescence 1:10-1:500, Immunohistochemistry-Frozen 1:10-1:500
Application Notes	This antibody can be used in Flow Cytometry, ELISA, Immunofluorescence, Immunohistochemistry-Frozen and Western Blot. Western Blot: it is recommended to run under non-reducing conditions. The band size is approximately 42 kDa. Immunohistochemistry-Frozen: acetone fixation is recommended. ELISA: it is recommended to coat microtiter plates with antibody at 20ug/ml. Recommended controls: Positive: Rat hepatocytes; Negative: Rat kidney, pancreas, small intestine, and colon. Dilutions to be used depend on the detection system that is applied. It is recommended that users test the reagent and determine their own optimal dilutions. The typical starting working dilution is 1:50.



Images

Flow Cytometry: ASGPR1 Antibody (8D7) [NBP1-60150] - Detection of ASGPR1 in HepG2 cells. Red, black and blue line represent the isotype control, cells only, and an ASGPR1 antibody conjugated to FITC with a concentration of 10 ug/ml, respectively.



Publications

- Chander N, Basha G, Yan Cheng M et al. Lipid nanoparticle mRNA systems containing high levels of sphingomyelin engender enhanced protein expression in hepatic and extra-hepatic tissues *Molecular Therapy - Methods & Clinical Development* 2023-06-11 [PMID: 37564393] (FLOW, Mouse)
- Carol C, Amanda M, Ryan G et al. Alcohol-Induced Liver Injury: Down-regulation and Redistribution of Rab3D Results in Atypical Protein Trafficking *Hepatology* 2022-02-06 [PMID: 34494400] (WB, Human)
- Demina EP, Smutova V, Pan X et al. Neuraminidases 1 and 3 Trigger Atherosclerosis by Desialylating Low-Density Lipoproteins and Increasing Their Uptake by Macrophages *Journal of the American Heart Association* 2021-02-16 [PMID: 33554615] (WB, Mouse)
- Kiamehr M, Viiri L E et al. Lipidomic profiling of patient-specific iPSC-derived hepatocyte-like cells. *Dis Model Mech* 2017-01-09 [PMID: 28733363] (Mouse)
- Zhou XL, Sun PN, Huang TH, Xie QD, Kang XJ, Liu LM. Effects of hepatitis B virus S protein on human sperm function. *Hum Reprod*;24(7):1575-83. 2009-07-01 [PMID: 19279032]
- Keyel PA, Mishra SK, Roth R, Heuser JE, Watkins SC, Traub LM. A single common portal for clathrin-mediated endocytosis of distinct cargo governed by cargo-selective adaptors. *Mol Biol Cell*;17(10):4300-17. 2006-10-01 [PMID: 16870701]
- Shimada M, Mizuno M, Uesu T, Nasu J, Okada H, Shimomura H, Yamamoto K, Tsuji T, Shiratori Y. A monoclonal antibody to rat asialoglycoprotein receptor that recognizes an epitope specific to its major subunit. *Hepatology*. 26 (1):55-60. 2003-05-01 [PMID: 12787805]
- Hirai M, Mizuno M, Morisue Y, Yoshioka M, Shimada M, Nasu J, Okada H, Shimomura H, Yamamoto K, Tsuji T. Development of syngeneic monoclonal anti-idiotypic antibodies to mouse monoclonal anti-asialoglycoprotein receptor antibody. Source Department of Medicine and Medical Science, Okayama University Graduate School of Medicine and Dentistry, Japan . *Acta Med Okayama*. 56(3):135-9. 2002-06-01 [PMID: 12108584]
- Hyodo I, Mizuno M, Yamada G, Tsuji T. Distribution of asialoglycoprotein receptor in human hepatocellular carcinoma. *Liver*;13(2):80-5. 1993-04-01 [PMID: 8389955]
- Mizuno M, Yamada G, Sugiyama T, Vierling JM, Brown WR. Monoclonal antibodies identifying antigens on distinct domains of rat hepatocytes. *Liver*;7(5):251-9. 1987-10-01 [PMID: 3695813]
- Mizuno M, Yamada G, Nagashima H. Development of a monoclonal antibody identifying an antigen which is segregated to the sinusoidal and lateral plasma membranes of rat hepatocytes. *Gastroenterol Jpn*;21(3):238-44. 1986-06-01 [PMID: 3525313]



Novus Biologicals USA

10730 E. Briarwood Avenue
Centennial, CO 80112
USA
Phone: 303.730.1950
Toll Free: 1.888.506.6887
Fax: 303.730.1966
nb-customerservice@bio-techne.com

Bio-Techne Canada

21 Canmotor Ave
Toronto, ON M8Z 4E6
Canada
Phone: 905.827.6400
Toll Free: 855.668.8722
Fax: 905.827.6402
canada.inquires@bio-techne.com

Bio-Techne Ltd

19 Barton Lane
Abingdon Science Park
Abingdon, OX14 3NB, United Kingdom
Phone: (44) (0) 1235 529449
Free Phone: 0800 37 34 15
Fax: (44) (0) 1235 533420
info.EMEA@bio-techne.com

General Contact Information

www.novusbio.com
Technical Support: nb-technical@bio-techne.com
Orders: nb-customerservice@bio-techne.com
General: novus@novusbio.com

Products Related to NBP1-60150-0.025mg

HAF007	Goat anti-Mouse IgG Secondary Antibody [HRP]
NB720-B	Rabbit anti-Mouse IgG (H+L) Secondary Antibody [Biotin]
NBP1-97005-0.5mg	Mouse IgG1 Isotype Control (MG1)
NBP1-85581PEP	ASGPR1 Recombinant Protein Antigen

Limitations

This product is for research use only and is not approved for use in humans or in clinical diagnosis. Primary Antibodies are guaranteed for 1 year from date of receipt.

For more information on our 100% guarantee, please visit www.novusbio.com/guarantee

Earn gift cards/discounts by submitting a review: www.novusbio.com/reviews/submit/NBP1-60150

Earn gift cards/discounts by submitting a publication using this product:
www.novusbio.com/publications

