

Product Datasheet

SLC10A1 Antibody - BSA Free

NBP1-60109

Unit Size: 100 ul

Store at 4C short term. Aliquot and store at -20C long term. Avoid freeze-thaw cycles.

www.novusbio.com



technical@novusbio.com

Publications: 1

Protocols, Publications, Related Products, Reviews, Research Tools and Images at:
www.novusbio.com/NBP1-60109

Updated 2/21/2025 v.20.1

Earn rewards for product
reviews and publications.

Submit a publication at www.novusbio.com/publications

Submit a review at www.novusbio.com/reviews/destination/NBP1-60109



NBP1-60109

SLC10A1 Antibody - BSA Free

Product Information

Unit Size	100 ul
Concentration	0.5 mg/ml
Storage	Store at 4C short term. Aliquot and store at -20C long term. Avoid freeze-thaw cycles.
Clonality	Polyclonal
Preservative	0.09% Sodium Azide
Isotype	IgG
Purity	Affinity purified
Buffer	PBS, 2% Sucrose
Target Molecular Weight	38 kDa

Product Description

Description	The addition of 50% glycerol is optional for those storing this antibody at -20C and not aliquoting smaller units. However, please note that glycerol may interrupt some downstream antibody applications and should be added with caution.
Host	Rabbit
Gene ID	6554
Gene Symbol	SLC10A1
Species	Human
Immunogen	Synthetic peptides corresponding to SLC10A1(solute carrier family 10 (sodium/bile acid cotransporter family), member 1) The peptide sequence was selected from the middle region of SLC10A1 (NP_003040). Peptide sequence VFSLAMKGD MNLSIVMTTCSTFCALGMMPLLLYIYSRGIYDGLKDKVPY The peptide sequence for this immunogen was taken from within the described region.

Product Application Details

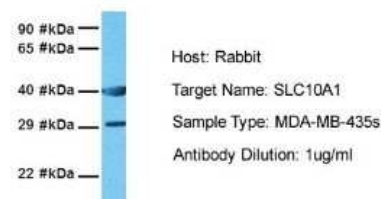
Applications	Western Blot, Flow Cytometry, Block/Neutralize
Recommended Dilutions	Western Blot 1.0 ug/ml, Flow Cytometry, Block/Neutralize
Application Notes	Use in Flow Cytometry, B/N reported in scientific literature (PMID:34266968).



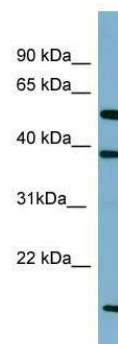
Images

Western Blot: SLC10A1 Antibody [NBP1-60109] - Sample Tissue:
Human MDA-MB-435s Antibody Dilution: 1.0 ug/ml

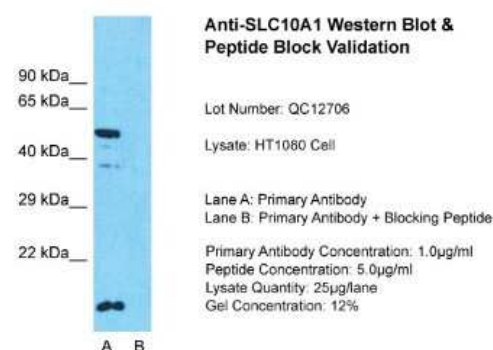
SLC10A1



Western Blot: SLC10A1 Antibody [NBP1-60109] - Titration: 0.2-1 ug/ml,
Positive Control: HT1080 cell lysate.



Western Blot: SLC10A1 Antibody [NBP1-60109] - Sample Tissue:
HT1080, Lane A: Primary Antibody, Lane B: Primary Antibody + Blocking
Peptide, Primary Antibody Concentration: 1ug/ml, Peptide
Concentration: 5ug/ml, Lysate Quantity: 25ug/lane/lane, Gel
Concentration: 0.12



Publications

Salhab A, Amer J, Lu Y, Safadi R Sodium+/taurocholate cotransporting polypeptide as target therapy for liver fibrosis
Gut 2021-07-15 [PMID: 34266968] (FLOW, B/N)



Novus Biologicals USA

10730 E. Briarwood Avenue
Centennial, CO 80112
USA
Phone: 303.730.1950
Toll Free: 1.888.506.6887
Fax: 303.730.1966
nb-customerservice@bio-techne.com

Bio-Techne Canada

21 Canmotor Ave
Toronto, ON M8Z 4E6
Canada
Phone: 905.827.6400
Toll Free: 855.668.8722
Fax: 905.827.6402
canada.inquires@bio-techne.com

Bio-Techne Ltd

19 Barton Lane
Abingdon Science Park
Abingdon, OX14 3NB, United Kingdom
Phone: (44) (0) 1235 529449
Free Phone: 0800 37 34 15
Fax: (44) (0) 1235 533420
info.EMEA@bio-techne.com

General Contact Information

www.novusbio.com
Technical Support: nb-technical@bio-techne.com
Orders: nb-customerservice@bio-techne.com
General: novus@novusbio.com

Products Related to NBP1-60109

HAF008	Goat anti-Rabbit IgG Secondary Antibody [HRP]
NB7160	Goat anti-Rabbit IgG (H+L) Secondary Antibody [HRP]
NBP2-24891	Rabbit IgG Isotype Control
H00006554-G01-10ug	Recombinant Human SLC10A1 Protein

Limitations

This product is for research use only and is not approved for use in humans or in clinical diagnosis. Primary Antibodies are guaranteed for 1 year from date of receipt.

For more information on our 100% guarantee, please visit www.novusbio.com/guarantee

Earn gift cards/discounts by submitting a review: www.novusbio.com/reviews/submit/NBP1-60109

Earn gift cards/discounts by submitting a publication using this product:
www.novusbio.com/publications

