

Product Datasheet

ACSL1 Antibody - BSA Free

NBP1-60016

Unit Size: 100 ul

Store at 4C short term. Aliquot and store at -20C long term. Avoid freeze-thaw cycles.

www.novusbio.com



technical@novusbio.com

Protocols, Publications, Related Products, Reviews, Research Tools and Images at:
www.novusbio.com/NBP1-60016

Updated 2/21/2025 v.20.1

Earn rewards for product
reviews and publications.

Submit a publication at www.novusbio.com/publications

Submit a review at www.novusbio.com/reviews/destination/NBP1-60016



NBP1-60016

ACSL1 Antibody - BSA Free

Product Information

Unit Size	100 ul
Concentration	0.5 mg/ml
Storage	Store at 4C short term. Aliquot and store at -20C long term. Avoid freeze-thaw cycles.
Clonality	Polyclonal
Preservative	0.09% Sodium Azide
Isotype	IgG
Purity	Affinity purified
Buffer	PBS, 2% Sucrose
Target Molecular Weight	78 kDa

Product Description

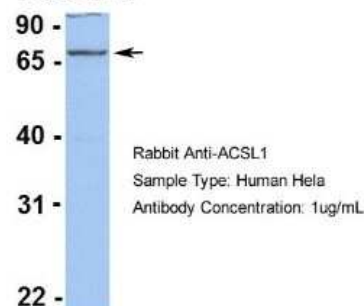
Description	The addition of 50% glycerol is optional for those storing this antibody at -20C and not aliquoting smaller units. However, please note that glycerol may interrupt some downstream antibody applications and should be added with caution.
Host	Rabbit
Gene ID	2180
Gene Symbol	ACSL1
Species	Human
Immunogen	Synthetic peptides corresponding to ACSL1 (acyl-CoA synthetase long-chain family member 1) The peptide sequence was selected from the C terminal of ACSL1. Peptide sequence GSFEELCRNKDVKKAILEDMVRLGKDSGLKPFEQVKGITLHPELFSIDNG. The peptide sequence for this immunogen was taken from within the described region.

Product Application Details

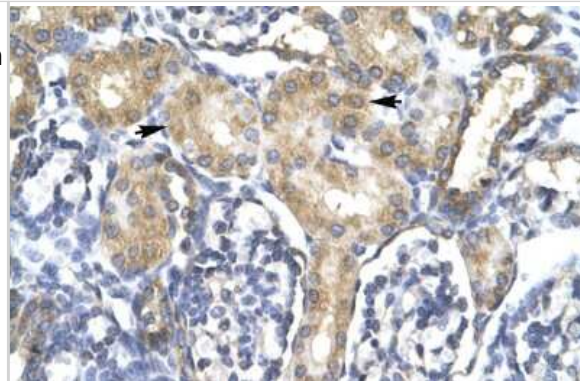
Applications	Western Blot, Immunohistochemistry, Immunohistochemistry-Paraffin
Recommended Dilutions	Western Blot 1.0 ug/ml, Immunohistochemistry 1:10-1:500, Immunohistochemistry-Paraffin 1:10-1:500

Images

Western Blot: ACSL1 Antibody [NBP1-60016] - Human HeLa

ACSL1

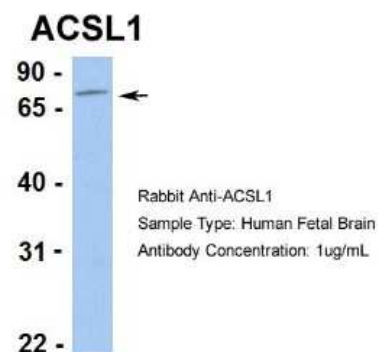
Immunohistochemistry: ACSL1 Antibody [NBP1-60016] - Human kidney, renal corpuscle cells are marked by arrows. Recommended concentration is 4 - 8 ug/ml.



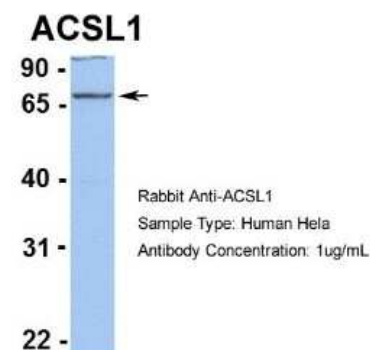
Western Blot: ACSL1 Antibody [NBP1-60016] - HepG2 cell lysate, Antibody Titration: 0.2-1 ug/ml



Western Blot: ACSL1 Antibody [NBP1-60016] - Hum. Fetal Brain.

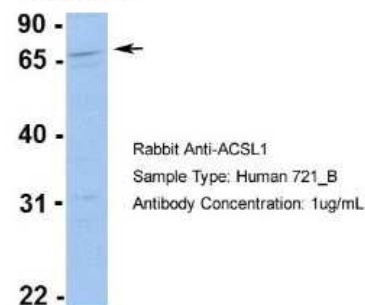


Western Blot: ACSL1 Antibody [NBP1-60016] - Human Hela.

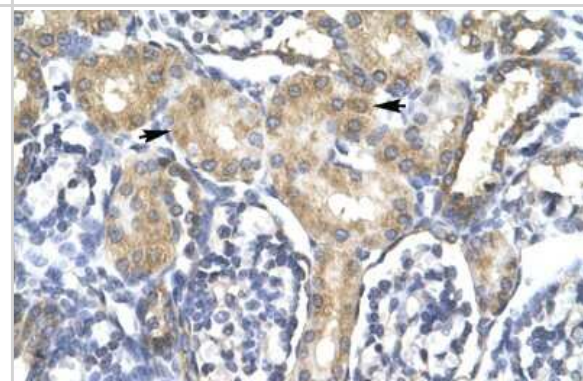


Western Blot: ACSL1 Antibody [NBP1-60016] - Human 721_B cells
 ACSL1 is strongly supported by BioGPS gene expression data to be expressed in Human 721_B cells

ACSL1



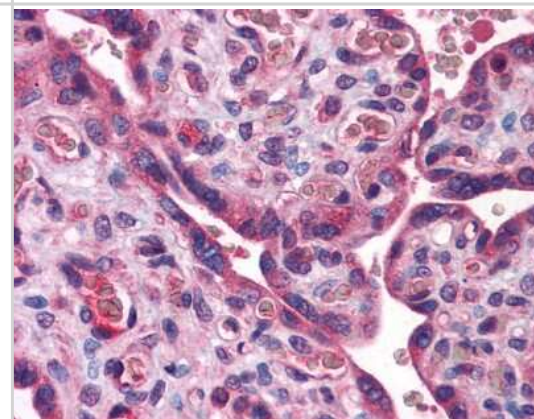
Immunohistochemistry-Paraffin: ACSL1 Antibody [NBP1-60016] - Human kidney Tissue, antibody concentration 4-8ug/ml. Cells with positive label: renal corpuscle cells (indicated with arrows) 400X magnification.



Immunohistochemistry: ACSL1 Antibody [NBP1-60016] - Formalin Fixed Paraffin Embedded Tissue: Human Liver Tissue Observed Staining: Cytoplasm in hepatocytes Primary Antibody Concentration: 1:600 Secondary Antibody: Donkey anti-Rabbit-Cy3 Secondary Antibody Concentration: 1:200 Magnification: 20X Exposure Time: 0.5 - 2.0 sec



Immunohistochemistry: ACSL1 Antibody [NBP1-60016] - heart, liver, pancreas, brain





Novus Biologicals USA

10730 E. Briarwood Avenue
Centennial, CO 80112
USA
Phone: 303.730.1950
Toll Free: 1.888.506.6887
Fax: 303.730.1966
nb-customerservice@bio-techne.com

Bio-Techne Canada

21 Canmotor Ave
Toronto, ON M8Z 4E6
Canada
Phone: 905.827.6400
Toll Free: 855.668.8722
Fax: 905.827.6402
canada.inquires@bio-techne.com

Bio-Techne Ltd

19 Barton Lane
Abingdon Science Park
Abingdon, OX14 3NB, United Kingdom
Phone: (44) (0) 1235 529449
Free Phone: 0800 37 34 15
Fax: (44) (0) 1235 533420
info.EMEA@bio-techne.com

General Contact Information

www.novusbio.com
Technical Support: nb-technical@bio-techne.com
Orders: nb-customerservice@bio-techne.com
General: novus@novusbio.com

Products Related to NBP1-60016

HAF008	Goat anti-Rabbit IgG Secondary Antibody [HRP]
NB7160	Goat anti-Rabbit IgG (H+L) Secondary Antibody [HRP]
NBP2-24891	Rabbit IgG Isotype Control
NB110-99585PEP	ACSL1 Antibody Blocking Peptide

Limitations

This product is for research use only and is not approved for use in humans or in clinical diagnosis. Primary Antibodies are guaranteed for 1 year from date of receipt.

For more information on our 100% guarantee, please visit www.novusbio.com/guarantee

Earn gift cards/discounts by submitting a review: www.novusbio.com/reviews/submit/NBP1-60016

Earn gift cards/discounts by submitting a publication using this product:
www.novusbio.com/publications

