

Product Datasheet

NHE8 Antibody - BSA Free

NBP1-59888

Unit Size: 100 ul

Store at 4C short term. Aliquot and store at -20C long term. Avoid freeze-thaw cycles.

www.novusbio.com



technical@novusbio.com

Publications: 2

Protocols, Publications, Related Products, Reviews, Research Tools and Images at:
www.novusbio.com/NBP1-59888

Updated 2/21/2025 v.20.1

Earn rewards for product
reviews and publications.

Submit a publication at www.novusbio.com/publications

Submit a review at www.novusbio.com/reviews/destination/NBP1-59888



NBP1-59888

NHE8 Antibody - BSA Free

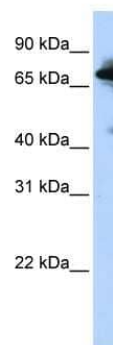
Product Information	
Unit Size	100 ul
Concentration	0.5 mg/ml
Storage	Store at 4C short term. Aliquot and store at -20C long term. Avoid freeze-thaw cycles.
Clonality	Polyclonal
Preservative	0.09% Sodium Azide
Isotype	IgG
Purity	Affinity purified
Buffer	PBS, 2% Sucrose

Product Description	
Description	The addition of 50% glycerol is optional for those storing this antibody at -20C and not aliquoting smaller units. However, please note that glycerol may interrupt some downstream antibody applications and should be added with caution.
Host	Rabbit
Gene ID	23315
Gene Symbol	SLC9A8
Species	Human, Mouse
Reactivity Notes	Mouse reactivity reported in scientific literature (PMID: 25377912).
Immunogen	Synthetic peptides corresponding to SLC9A8(solute carrier family 9 (sodium/hydrogen exchanger), member 8) The peptide sequence was selected from the middle region of SLC9A8. Peptide sequence AKYLNPFTRRLTQEDLHHGRIQMKTLTNKWYEEVRQGPSGEDDEQELL The peptide sequence for this immunogen was taken from within the described region.

Product Application Details	
Applications	Western Blot
Recommended Dilutions	Western Blot 1.0 ug/ml

Images

Western Blot: NHE8 Antibody [NBP1-59888] - HepG2 cell lysate, concentration 0.2-1 ug/ml.



Publications

Wiebe SA, Plain A, Pan W et al. NHE8 attenuates calcium influx into NRK cells and the proximal tubule epithelium Am. J. Physiol. Renal Physiol. 2019-05-01 [PMID: 31042050]

Pirojsakul K, Gattineni J, Dwarakanath V, Baum M. Renal nHE Expression and Activity in neonatal nHE3 and nHE8 null Mice Am. J. Physiol. Renal Physiol. 2014-11-05 [PMID: 25377912] (WB, Mouse)

Details:

nHE8 antibody used for WB on lysates of neonatal control and nHE3^{-/-} Mice treated or not with acid (Figure 2, Figure 6) - primary antibody used at 1:1000 dilution with 4C On incubation.





Novus Biologicals USA

10730 E. Briarwood Avenue
Centennial, CO 80112
USA
Phone: 303.730.1950
Toll Free: 1.888.506.6887
Fax: 303.730.1966
nb-customerservice@bio-techne.com

Bio-Techne Canada

21 Canmotor Ave
Toronto, ON M8Z 4E6
Canada
Phone: 905.827.6400
Toll Free: 855.668.8722
Fax: 905.827.6402
canada.inquires@bio-techne.com

Bio-Techne Ltd

19 Barton Lane
Abingdon Science Park
Abingdon, OX14 3NB, United Kingdom
Phone: (44) (0) 1235 529449
Free Phone: 0800 37 34 15
Fax: (44) (0) 1235 533420
info.EMEA@bio-techne.com

General Contact Information

www.novusbio.com
Technical Support: nb-technical@bio-techne.com
Orders: nb-customerservice@bio-techne.com
General: novus@novusbio.com

Products Related to NBP1-59888

HAF008	Goat anti-Rabbit IgG Secondary Antibody [HRP]
NB7160	Goat anti-Rabbit IgG (H+L) Secondary Antibody [HRP]
NBP2-24891	Rabbit IgG Isotype Control
236-EG-200	EGF [Unconjugated]

Limitations

This product is for research use only and is not approved for use in humans or in clinical diagnosis. Primary Antibodies are guaranteed for 1 year from date of receipt.

For more information on our 100% guarantee, please visit www.novusbio.com/guarantee

Earn gift cards/discounts by submitting a review: www.novusbio.com/reviews/submit/NBP1-59888

Earn gift cards/discounts by submitting a publication using this product:
www.novusbio.com/publications

