

Product Datasheet

CPT1A Antibody - BSA Free

NBP1-59608-100ul

Unit Size: 100 ul

Store at 4C short term. Aliquot and store at -20C long term. Avoid freeze-thaw cycles.

www.novusbio.com



technical@novusbio.com

Publications: 1

Protocols, Publications, Related Products, Reviews, Research Tools and Images at:
www.novusbio.com/NBP1-59608

Updated 8/21/2025 v.20.1

Earn rewards for product
reviews and publications.

Submit a publication at www.novusbio.com/publications

Submit a review at www.novusbio.com/reviews/destination/NBP1-59608



NBP1-59608-100ul

CPT1A Antibody - BSA Free

Product Information

| | |
|--------------------------------|--|
| Unit Size | 100 ul |
| Concentration | 0.5 mg/ml |
| Storage | Store at 4C short term. Aliquot and store at -20C long term. Avoid freeze-thaw cycles. |
| Clonality | Polyclonal |
| Preservative | 0.09% Sodium Azide |
| Isotype | IgG |
| Purity | Affinity purified |
| Buffer | PBS, 2% Sucrose |
| Target Molecular Weight | 86 kDa |

Product Description

| | |
|--------------------|---|
| Description | The addition of 50% glycerol is optional for those storing this antibody at -20C and not aliquoting smaller units. However, please note that glycerol may interrupt some downstream antibody applications and should be added with caution. |
| Host | Rabbit |
| Gene ID | 1374 |
| Gene Symbol | CPT1A |
| Species | Human |
| Immunogen | Synthetic peptides corresponding to CPT1A(carnitine palmitoyltransferase 1A (liver)) The peptide sequence was selected from the middle region of CPT1A (NP_001027017). Peptide sequence LSTSQTPQQVELFDLENNPEYVSSGGGFPGPVADDGYGVSYILVGENLIN. The peptide sequence for this immunogen was taken from within the described region. |

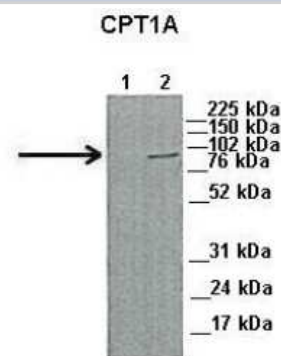
Product Application Details

| | |
|------------------------------|---|
| Applications | Western Blot, Immunohistochemistry-Paraffin, Immunohistochemistry |
| Recommended Dilutions | Western Blot 1.0 ug/ml, Immunohistochemistry 1:300, Immunohistochemistry-Paraffin |



Images

Western Blot: CPT1A Antibody [NBP1-59608] - Lanes: 1. 45ug capan1 cell lysate 2. 45 ug HPAF cell lysate Primary, Antibody Dilution: 1 : 1000 Secondary Antibody: Anti-Rabbit HRP Secondary, Antibody Dilution: 1 : 5000 Gene name: CPT1A.



See Immunoblot 2 Data and Customer Feedback for more information

Western Blot: CPT1A Antibody [NBP1-59608] - 293T cells lysate, concentration 0.2-1 ug/ml.



Western Blot: CPT1A Antibody [NBP1-59608] - Sample Tissue: 293T, Lane A: Primary Antibody, Lane B: Primary Antibody + Blocking Peptide, Primary Antibody Concentration: 1ug/ml, Peptide Concentration: 5ug/ml, Lysate Quantity: 25ug/lane/lane, Gel Concentration: 0.12



Anti-CPT1A Western Blot & Peptide Block Validation

Lot Number: QC14871

Lysate: 293T Cell

Lane A: Primary Antibody

Lane B: Primary Antibody + Blocking Peptide

Primary Antibody Concentration: 1.0µg/ml

Peptide Concentration: 5.0µg/ml

Lysate Quantity: 25µg/lane

Gel Concentration: 12%

Publications

Wei Sun, Tao Nie, Kuai Li, Wenjie Wu, Qiaoyun Long, Tianshi Feng, Liufeng Mao, Yuan Gao, Qing Liu, Xuefei Gao, Dewei Ye, Kaixuan Yan, Ping Gu, Yong Xu, Xuemei Zhao, Kang Chen, Kerry Martin Loomes, Shaoqiang Lin, Donghai Wu, Xiaoyan Hui Hepatic CPT1A Facilitates Liver-Adipose Cross-Talk via Induction of FGF21 in Mice. Diabetes 2021-10-21 [PMID: 34675003]

**Novus Biologicals USA**

10730 E. Briarwood Avenue
Centennial, CO 80112
USA
Phone: 303.730.1950
Toll Free: 1.888.506.6887
Fax: 303.730.1966
nb-customerservice@bio-techne.com

Bio-Techne Canada

21 Canmotor Ave
Toronto, ON M8Z 4E6
Canada
Phone: 905.827.6400
Toll Free: 855.668.8722
Fax: 905.827.6402
canada.inquires@bio-techne.com

Bio-Techne Ltd

19 Barton Lane
Abingdon Science Park
Abingdon, OX14 3NB, United Kingdom
Phone: (44) (0) 1235 529449
Free Phone: 0800 37 34 15
Fax: (44) (0) 1235 533420
info.EMEA@bio-techne.com

General Contact Information

www.novusbio.com
Technical Support: nb-technical@bio-techne.com
Orders: nb-customerservice@bio-techne.com
General: novus@novusbio.com

Products Related to NBP1-59608-100ul

| | |
|--------------------|---|
| HAF008 | Goat anti-Rabbit IgG Secondary Antibody [HRP] |
| NB7160 | Goat anti-Rabbit IgG (H+L) Secondary Antibody [HRP] |
| NBP2-24891 | Rabbit IgG Isotype Control |
| H00001374-Q01-10ug | Recombinant Human CPT1A GST (N-Term) Protein |

Limitations

This product is for research use only and is not approved for use in humans or in clinical diagnosis. Primary Antibodies are guaranteed for 1 year from date of receipt.

For more information on our 100% guarantee, please visit www.novusbio.com/guarantee

Earn gift cards/discounts by submitting a review: www.novusbio.com/reviews/submit/NBP1-59608

Earn gift cards/discounts by submitting a publication using this product:
www.novusbio.com/publications

