

Product Datasheet

SLC22A2/OCT2 Antibody - BSA Free NBP1-59451

Unit Size: 100ul

Store at 4C short term. Aliquot and store at -20C long term. Avoid freeze-thaw cycles.

www.novusbio.com



technical@novusbio.com

Publications: 1

Protocols, Publications, Related Products, Reviews, Research Tools and Images at:
www.novusbio.com/NBP1-59451

Updated 2/21/2025 v.20.1

Earn rewards for product
reviews and publications.

Submit a publication at www.novusbio.com/publications

Submit a review at www.novusbio.com/reviews/destination/NBP1-59451



NBP1-59451

SLC22A2/OCT2 Antibody - BSA Free

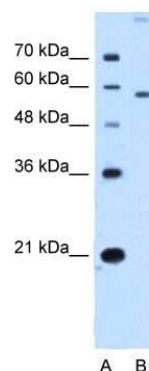
| Product Information | |
|---------------------|--|
| Unit Size | 100ul |
| Concentration | 1 mg/ml |
| Storage | Store at 4C short term. Aliquot and store at -20C long term. Avoid freeze-thaw cycles. |
| Clonality | Polyclonal |
| Preservative | 0.09% Sodium Azide |
| Isotype | IgG |
| Purity | Protein A purified |
| Buffer | PBS, 2% Sucrose |

| Product Description | |
|---------------------|---|
| Description | The addition of 50% glycerol is optional for those storing this antibody at -20C and not aliquoting smaller units. However, please note that glycerol may interrupt some downstream antibody applications and should be added with caution. |
| Host | Rabbit |
| Gene ID | 6582 |
| Gene Symbol | SLC22A2 |
| Species | Human |
| Immunogen | Synthetic peptides corresponding to SLC22A2(solute carrier family 22 (organic cation transporter), member 2) The peptide sequence was selected from the N terminal of SLC22A2. Peptide sequence MPTTVDDVLEHGGEFHHFQKQMFFLLALLSATFAPIYVGIVFLGFTPDR The peptide sequence for this immunogen was taken from within the described region. |

| Product Application Details | |
|-----------------------------|------------------------|
| Applications | Western Blot |
| Recommended Dilutions | Western Blot 1.0 ug/ml |

Images

Western Blot: SLC22A2 Antibody [NBP1-59451] - HepG2 cell lysate, concentration 2.5 ug/ml.



Publications

Tirsa T. van Duijl, L. Renee Ruhaak, Nico P. M. Smit, Mervin M. Pieterse, Fred P. H. T. M. Romijn, Natasja Dolezal, Jan Wouter Drijfhout, Johan W. de Fijter, Christa M. Cobbaert Development and Provisional Validation of a Multiplex LC-MRM-MS Test for Timely Kidney Injury Detection in Urine Journal of Proteome Research 2021-11-04 [PMID: 34735145]





Novus Biologicals USA

10730 E. Briarwood Avenue
Centennial, CO 80112
USA
Phone: 303.730.1950
Toll Free: 1.888.506.6887
Fax: 303.730.1966
nb-customerservice@bio-techne.com

Bio-Techne Canada

21 Canmotor Ave
Toronto, ON M8Z 4E6
Canada
Phone: 905.827.6400
Toll Free: 855.668.8722
Fax: 905.827.6402
canada.inquires@bio-techne.com

Bio-Techne Ltd

19 Barton Lane
Abingdon Science Park
Abingdon, OX14 3NB, United Kingdom
Phone: (44) (0) 1235 529449
Free Phone: 0800 37 34 15
Fax: (44) (0) 1235 533420
info.EMEA@bio-techne.com

General Contact Information

www.novusbio.com
Technical Support: nb-technical@bio-techne.com
Orders: nb-customerservice@bio-techne.com
General: novus@novusbio.com

Products Related to NBP1-59451

| | |
|---------------|---|
| HAF008 | Goat anti-Rabbit IgG Secondary Antibody [HRP] |
| NB7160 | Goat anti-Rabbit IgG (H+L) Secondary Antibody [HRP] |
| NBP2-24891 | Rabbit IgG Isotype Control |
| NBP1-89417PEP | SLC22A2/OCT2 Recombinant Protein Antigen |

Limitations

This product is for research use only and is not approved for use in humans or in clinical diagnosis. Primary Antibodies are guaranteed for 1 year from date of receipt.

For more information on our 100% guarantee, please visit www.novusbio.com/guarantee

Earn gift cards/discounts by submitting a review: www.novusbio.com/reviews/submit/NBP1-59451

Earn gift cards/discounts by submitting a publication using this product:
www.novusbio.com/publications

