

Product Datasheet

SOCS-1 Antibody - BSA Free

NBP1-58943

Unit Size: 100 ul

Store at 4C short term. Aliquot and store at -20C long term. Avoid freeze-thaw cycles.

www.novusbio.com



technical@novusbio.com

Protocols, Publications, Related Products, Reviews, Research Tools and Images at:
www.novusbio.com/NBP1-58943

Updated 2/21/2025 v.20.1

Earn rewards for product
reviews and publications.

Submit a publication at www.novusbio.com/publications

Submit a review at www.novusbio.com/reviews/destination/NBP1-58943



NBP1-58943

SOCS-1 Antibody - BSA Free

Product Information

Unit Size	100 ul
Concentration	1 mg/ml
Storage	Store at 4C short term. Aliquot and store at -20C long term. Avoid freeze-thaw cycles.
Clonality	Polyclonal
Preservative	0.09% Sodium Azide
Isotype	IgG
Purity	Protein A purified
Buffer	PBS, 2% Sucrose

Product Description

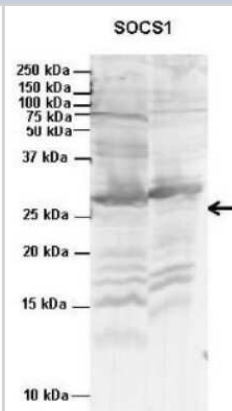
Description	The addition of 50% glycerol is optional for those storing this antibody at -20C and not aliquoting smaller units. However, please note that glycerol may interrupt some downstream antibody applications and should be added with caution.
Host	Rabbit
Gene ID	8651
Gene Symbol	SOCS1
Species	Human, Mouse
Immunogen	This SOCS-1 antibody is made to synthetic peptides corresponding to SOCS1 (suppressor of cytokine signaling 1). The peptide sequence was selected from the N terminal of SOCS1. Peptide sequence RRPEPSSSSSSSPAAPARPRPCPAVPAPAPGDTHFRTFRSHADYRRITRA. The peptide sequence for this immunogen was taken from within the described region.

Product Application Details

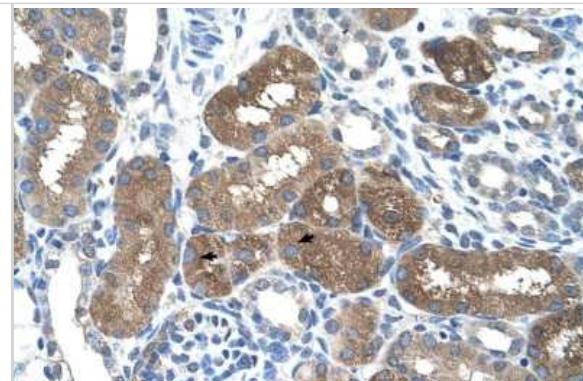
Applications	Western Blot, Immunohistochemistry, Immunohistochemistry-Paraffin
Recommended Dilutions	Western Blot 1.0 ug/ml, Immunohistochemistry 1:10 - 1:500, Immunohistochemistry-Paraffin 1:10 - 1:500

Images

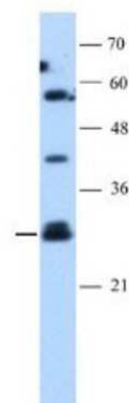
Western Blot: SOCS-1 Antibody [NBP1-58943] - Lanes: 1. Mouse WT brain extract (80ug) 2. Rat brain extract (80ug) Primary Antibody Dilution: 2ug/ml Secondary Antibody: IRDye 800CW goat anti-rabbit from Li-COR Bioscience Secondary Antibody Dilution: 1: 20,000 Gene Name: SOCS1



Immunohistochemistry: SOCS-1 Antibody [NBP1-58943] - Paraffin Embedded Tissue: Human Kidney Cellular Data: Epithelial cells of renal tubule Antibody Concentration: 4.0 - 8.0 ug/ml Magnification: 400X



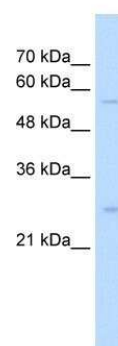
Western Blot: SOCS-1 Antibody [NBP1-58943] - Jurkat Lysate (20 ug). Antibody at 1.25 ug/mL.



Western Blot: SOCS-1 Antibody [NBP1-58943] - Jurkat cell lysate, concentration 0.2-1 ug/ml.



Western Blot: SOCS-1 Antibody [NBP1-58943] - Mouse WT brain and Rat brain, antibody at 2 ug/mL.





Novus Biologicals USA

10730 E. Briarwood Avenue
Centennial, CO 80112
USA
Phone: 303.730.1950
Toll Free: 1.888.506.6887
Fax: 303.730.1966
nb-customerservice@bio-techne.com

Bio-Techne Canada

21 Canmotor Ave
Toronto, ON M8Z 4E6
Canada
Phone: 905.827.6400
Toll Free: 855.668.8722
Fax: 905.827.6402
canada.inquires@bio-techne.com

Bio-Techne Ltd

19 Barton Lane
Abingdon Science Park
Abingdon, OX14 3NB, United Kingdom
Phone: (44) (0) 1235 529449
Free Phone: 0800 37 34 15
Fax: (44) (0) 1235 533420
info.EMEA@bio-techne.com

General Contact Information

www.novusbio.com
Technical Support: nb-technical@bio-techne.com
Orders: nb-customerservice@bio-techne.com
General: novus@novusbio.com

Products Related to NBP1-58943

HAF008	Goat anti-Rabbit IgG Secondary Antibody [HRP]
NB7160	Goat anti-Rabbit IgG (H+L) Secondary Antibody [HRP]
NBP2-24891	Rabbit IgG Isotype Control
NB100-56637PEP	SOCS-1 Antibody Blocking Peptide

Limitations

This product is for research use only and is not approved for use in humans or in clinical diagnosis. Primary Antibodies are guaranteed for 1 year from date of receipt.

For more information on our 100% guarantee, please visit www.novusbio.com/guarantee

Earn gift cards/discounts by submitting a review: www.novusbio.com/reviews/submit/NBP1-58943

Earn gift cards/discounts by submitting a publication using this product:
www.novusbio.com/publications

