

# Product Datasheet

## IFI44L Antibody - BSA Free

### NBP1-57838

Unit Size: 100 ul

Store at 4C short term. Aliquot and store at -20C long term. Avoid freeze-thaw cycles.

[www.novusbio.com](http://www.novusbio.com)



[technical@novusbio.com](mailto:technical@novusbio.com)

#### Publications: 1

Protocols, Publications, Related Products, Reviews, Research Tools and Images at:  
[www.novusbio.com/NBP1-57838](http://www.novusbio.com/NBP1-57838)

Updated 2/21/2025 v.20.1

Earn rewards for product  
reviews and publications.

Submit a publication at [www.novusbio.com/publications](http://www.novusbio.com/publications)

Submit a review at [www.novusbio.com/reviews/destination/NBP1-57838](http://www.novusbio.com/reviews/destination/NBP1-57838)



**NBP1-57838**

IFI44L Antibody - BSA Free

Product Information	
Unit Size	100 ul
Concentration	1 mg/ml
Storage	Store at 4C short term. Aliquot and store at -20C long term. Avoid freeze-thaw cycles.
Clonality	Polyclonal
Preservative	0.09% Sodium Azide
Isotype	IgG
Purity	Protein A purified
Buffer	PBS, 2% Sucrose

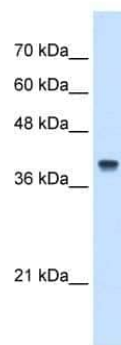
Product Description	
Description	The addition of 50% glycerol is optional for those storing this antibody at -20C and not aliquoting smaller units. However, please note that glycerol may interrupt some downstream antibody applications and should be added with caution.
Host	Rabbit
Gene ID	10964
Gene Symbol	IFI44L
Species	Human
Immunogen	Synthetic peptides corresponding to IFI44L(interferon-induced protein 44-like) The peptide sequence was selected from the N terminal of IFI44L. Peptide sequence MEVTTRLTWNDENHLRKLLGNVSLSLLYKSSVHGGSIEDMVERCSRQGCT. The peptide sequence for this immunogen was taken from within the described region.

Product Application Details	
Applications	Western Blot, Immunohistochemistry, Immunohistochemistry-Paraffin
Recommended Dilutions	Western Blot 1.0 ug/ml, Immunohistochemistry 1:10-1:500, Immunohistochemistry-Paraffin 1:10-1:500

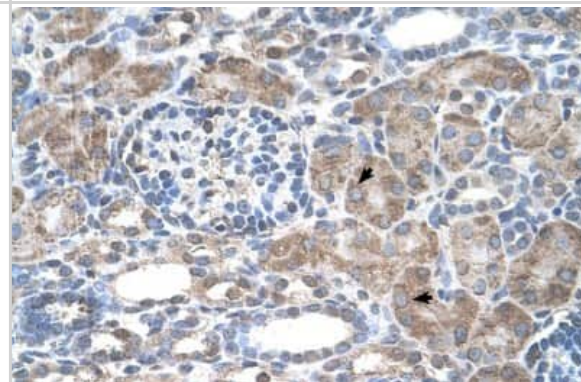


## Images

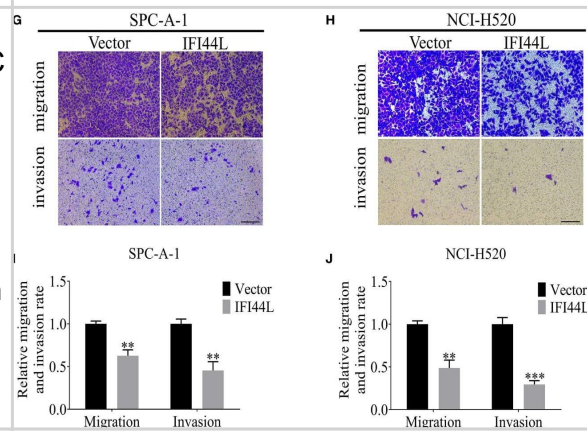
Western Blot: IFI44L Antibody [NBP1-57838] - Jurkat cell lysate, concentration 5.0ug/ml.



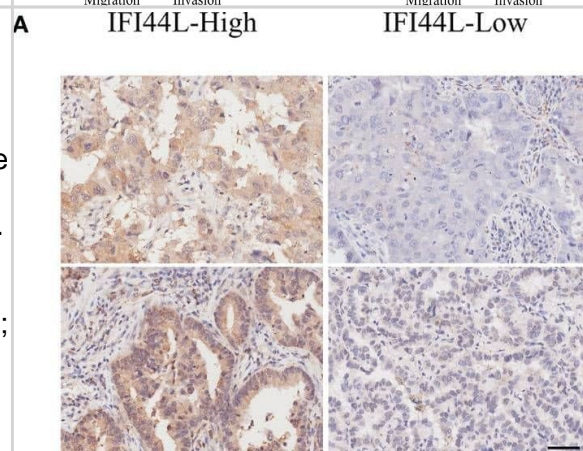
Immunohistochemistry-Paraffin: IFI44L Antibody [NBP1-57838] - Human kidney Tissue, antibody concentration 4-8ug/ml. Cells with positive label: renal corpuscle cells (indicated with arrows) 400X magnification.



Immunohistochemistry: IFI44L Antibody [NBP1-57838] - Overexpression of IFI44L gene inhibited the proliferation, migration, & invasion of NSCLC cells. (A, B) CCK-8 assay was used to detect the effect of IFI44L overexpression on NSCLC cell growth. (C–F) The cell migration was detected after overexpression of IFI44L gene by scratch healing tests. Bar equals 100  $\mu$ m. (G–J) Overexpression of IFI44L inhibited the migration & invasion of NSCLC cells by transwell assay. Bar equals 50  $\mu$ m. NSCLC, non-small cell lung cancer; CCK-8: cell counting kit-8; \* $p < 0.05$ , \*\* $p < 0.01$ , \*\*\* $p < 0.001$ . Image collected & cropped by CiteAb from the following publication (<https://pubmed.ncbi.nlm.nih.gov/35047409>), licensed under a CC-BY license. Not internally tested by Novus Biologicals.



Immunohistochemistry: IFI44L Antibody [NBP1-57838] - Verification of the prognostic value & immune implication of IFI44L in NSCLC. (A) Representative IHC images of IFI44L in TMA cohort with the scale bar equal to 50  $\mu$ m. (B) The correlation of IFI44L expression with OS among 97 NSCLC patients. (C) Univariate Cox regression analysis regarding the expression of IFI44L & other clinical parameters. (D) Multivariate Cox regression analysis about the expression of IFI44L & clinical parameters. (E, F) The expression levels of the related immunomodulators were detected in NSCLC cells after overexpression of IFI44L. NSCLC, non-small cell lung cancer; OS, overall survival; LUAD, lung adenocarcinoma; IHC, immunohistochemistry; TMA, tissue microarray; \*\* $p < 0.01$ , \*\*\* $p < 0.001$ . Image collected & cropped by CiteAb from the following publication (<https://pubmed.ncbi.nlm.nih.gov/35047409>), licensed under a CC-BY license. Not internally tested by Novus Biologicals.



## Publications

Zeng Y, Zhang Z, Chen H et al. Comprehensive Analysis of Immune Implication and Prognostic Value of IFI44L in Non-Small Cell Lung Cancer *Frontiers in oncology* 2022-01-03 [PMID: 35047409] (IF/IHC, Human)



### **Novus Biologicals USA**

10730 E. Briarwood Avenue  
Centennial, CO 80112  
USA  
Phone: 303.730.1950  
Toll Free: 1.888.506.6887  
Fax: 303.730.1966  
nb-customerservice@bio-techne.com

### **Bio-Techne Canada**

21 Canmotor Ave  
Toronto, ON M8Z 4E6  
Canada  
Phone: 905.827.6400  
Toll Free: 855.668.8722  
Fax: 905.827.6402  
canada.inquires@bio-techne.com

### **Bio-Techne Ltd**

19 Barton Lane  
Abingdon Science Park  
Abingdon, OX14 3NB, United Kingdom  
Phone: (44) (0) 1235 529449  
Free Phone: 0800 37 34 15  
Fax: (44) (0) 1235 533420  
info.EMEA@bio-techne.com

### **General Contact Information**

www.novusbio.com  
Technical Support: nb-technical@bio-techne.com  
Orders: nb-customerservice@bio-techne.com  
General: novus@novusbio.com

### **Products Related to NBP1-57838**

---

HAF008	Goat anti-Rabbit IgG Secondary Antibody [HRP]
NB7160	Goat anti-Rabbit IgG (H+L) Secondary Antibody [HRP]
NBP2-24891	Rabbit IgG Isotype Control
H00010964-P01-10ug	Recombinant Human IFI44L GST (N-Term) Protein

---

### **Limitations**

This product is for research use only and is not approved for use in humans or in clinical diagnosis. Primary Antibodies are guaranteed for 1 year from date of receipt.

For more information on our 100% guarantee, please visit [www.novusbio.com/guarantee](http://www.novusbio.com/guarantee)

Earn gift cards/discounts by submitting a review: [www.novusbio.com/reviews/submit/NBP1-57838](http://www.novusbio.com/reviews/submit/NBP1-57838)

Earn gift cards/discounts by submitting a publication using this product:  
[www.novusbio.com/publications](http://www.novusbio.com/publications)

