

# Product Datasheet

## SYDE1 Antibody - BSA Free

### NBP1-57607

Unit Size: 100 ul

Store at 4C short term. Aliquot and store at -20C long term. Avoid freeze-thaw cycles.

[www.novusbio.com](http://www.novusbio.com)



[technical@novusbio.com](mailto:technical@novusbio.com)

#### Publications: 3

Protocols, Publications, Related Products, Reviews, Research Tools and Images at:  
[www.novusbio.com/NBP1-57607](http://www.novusbio.com/NBP1-57607)

Updated 2/21/2025 v.20.1

Earn rewards for product  
reviews and publications.

Submit a publication at [www.novusbio.com/publications](http://www.novusbio.com/publications)

Submit a review at [www.novusbio.com/reviews/destination/NBP1-57607](http://www.novusbio.com/reviews/destination/NBP1-57607)



**NBP1-57607**

SYDE1 Antibody - BSA Free

Product Information	
Unit Size	100 ul
Concentration	0.5 mg/ml
Storage	Store at 4C short term. Aliquot and store at -20C long term. Avoid freeze-thaw cycles.
Clonality	Polyclonal
Preservative	0.09% Sodium Azide
Isotype	IgG
Purity	Affinity purified
Buffer	PBS, 2% Sucrose

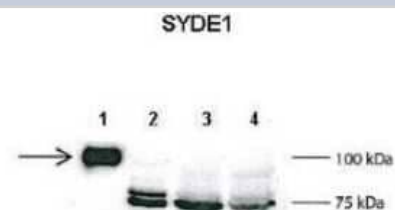
Product Description	
Description	The addition of 50% glycerol is optional for those storing this antibody at -20C and not aliquoting smaller units. However, please note that glycerol may interrupt some downstream antibody applications and should be added with caution.
Host	Rabbit
Gene ID	85360
Gene Symbol	SYDE1
Species	Human
Immunogen	Synthetic peptides corresponding to SYDE1(synapse defective 1, Rho GTPase, homolog 1 (C. elegans)) The peptide sequence was selected from the C terminal of SYDE1. Peptide sequence PYLRPKRQPPLHLPLADPEVVTRPRGRGGPESPPSNRYAGDWSVCGRDFL. The peptide sequence for this immunogen was taken from within the described region.

Product Application Details	
Applications	Western Blot, Knockout Validated
Recommended Dilutions	Western Blot 1.0 ug/ml, Knockout Validated



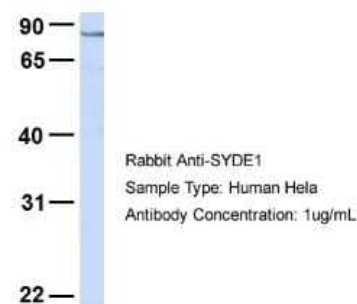
## Images

Western Blot: SYDE1 Antibody [NBP1-57607] - Lanes: 1: 2ug mouse SYDE1 transfected HEK293T lysate, 2: 15ug untransfected HEK293T lysate, 3: 100ug wild type mouse brain lysate, 4: 100ug SYDE1 knock-out mouse brain lysate Primary Antibody Dilution: 1:500 Secondary Antibody: Anti-rabbit L-chain HRP Sec



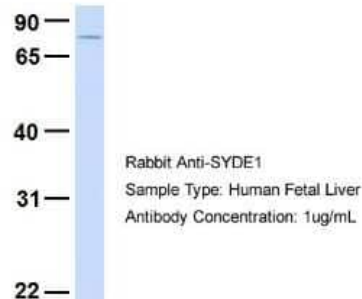
Western Blot: SYDE1 Antibody [NBP1-57607] - HeLa, Antibody Dilution: 1.0 ug/ml SYDE1 is supported by BioGPS gene expression data to be expressed in HeLa.

### SYDE1



Western Blot: SYDE1 Antibody [NBP1-57607] - Human Fetal Liver, Antibody Dilution: 1.0 ug/ml.

### SYDE1



## Publications

Xu H, Yang H, Wang Z et al. Epidermal stem cell derived exosomes alleviate excessive autophagy induced endothelial cell apoptosis by delivering miR200b-3p to diabetic wounds The Journal of investigative dermatology 2023-10-12 [PMID: 37838331] (WB, Rat)

Maji S, Pirozzi M, Raturaj et al. Copper-independent lysosomal localisation of the Wilson disease protein ATP7B Traffic (Copenhagen, Denmark) 2023-10-17 [PMID: 37846526] (WB, Mouse)

Xu h, Wang Z, Yang H et al. Epidermal stem cell-derived exosomes alleviate autophagy induced endothelial cell apoptosis through miR200b-3p/ERK pathway in diabetic wounds Research Square 2022-06-16 (WB, Mouse)



### **Novus Biologicals USA**

10730 E. Briarwood Avenue  
Centennial, CO 80112  
USA  
Phone: 303.730.1950  
Toll Free: 1.888.506.6887  
Fax: 303.730.1966  
nb-customerservice@bio-techne.com

### **Bio-Techne Canada**

21 Canmotor Ave  
Toronto, ON M8Z 4E6  
Canada  
Phone: 905.827.6400  
Toll Free: 855.668.8722  
Fax: 905.827.6402  
canada.inquires@bio-techne.com

### **Bio-Techne Ltd**

19 Barton Lane  
Abingdon Science Park  
Abingdon, OX14 3NB, United Kingdom  
Phone: (44) (0) 1235 529449  
Free Phone: 0800 37 34 15  
Fax: (44) (0) 1235 533420  
info.EMEA@bio-techne.com

### **General Contact Information**

[www.novusbio.com](http://www.novusbio.com)  
Technical Support: nb-technical@bio-techne.com  
Orders: nb-customerservice@bio-techne.com  
General: novus@novusbio.com

### **Products Related to NBP1-57607**

---

HAF008	Goat anti-Rabbit IgG Secondary Antibody [HRP]
NB7160	Goat anti-Rabbit IgG (H+L) Secondary Antibody [HRP]
NBP2-24891	Rabbit IgG Isotype Control
NBP1-89350PEP	SYDE1 Recombinant Protein Antigen

---

### **Limitations**

This product is for research use only and is not approved for use in humans or in clinical diagnosis. Primary Antibodies are guaranteed for 1 year from date of receipt.

For more information on our 100% guarantee, please visit [www.novusbio.com/guarantee](http://www.novusbio.com/guarantee)

Earn gift cards/discounts by submitting a review: [www.novusbio.com/reviews/submit/NBP1-57607](http://www.novusbio.com/reviews/submit/NBP1-57607)

Earn gift cards/discounts by submitting a publication using this product:  
[www.novusbio.com/publications](http://www.novusbio.com/publications)

