

# Product Datasheet

## Cytosolic Sulfotransferase 1E1/SULT1E1 Antibody - BSA Free NBP1-56977

Unit Size: 100 ul

Store at 4C short term. Aliquot and store at -20C long term. Avoid freeze-thaw cycles.

[www.novusbio.com](http://www.novusbio.com)



[technical@novusbio.com](mailto:technical@novusbio.com)

### Publications: 2

Protocols, Publications, Related Products, Reviews, Research Tools and Images at:  
[www.novusbio.com/NBP1-56977](http://www.novusbio.com/NBP1-56977)

Updated 2/21/2025 v.20.1

Earn rewards for product reviews and publications.

Submit a publication at [www.novusbio.com/publications](http://www.novusbio.com/publications)

Submit a review at [www.novusbio.com/reviews/destination/NBP1-56977](http://www.novusbio.com/reviews/destination/NBP1-56977)



**NBP1-56977****Cytosolic Sulfotransferase 1E1/SULT1E1 Antibody - BSA Free**

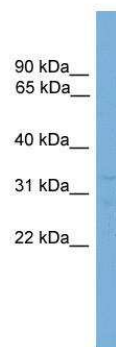
<b>Product Information</b>	
<b>Unit Size</b>	100 ul
<b>Concentration</b>	0.5 mg/ml
<b>Storage</b>	Store at 4C short term. Aliquot and store at -20C long term. Avoid freeze-thaw cycles.
<b>Clonality</b>	Polyclonal
<b>Preservative</b>	0.09% Sodium Azide
<b>Isotype</b>	IgG
<b>Purity</b>	Affinity purified
<b>Buffer</b>	PBS, 2% Sucrose

<b>Product Description</b>	
<b>Description</b>	The addition of 50% glycerol is optional for those storing this antibody at -20C and not aliquoting smaller units. However, please note that glycerol may interrupt some downstream antibody applications and should be added with caution.
<b>Host</b>	Rabbit
<b>Gene ID</b>	6783
<b>Gene Symbol</b>	SULT1E1
<b>Species</b>	Human
<b>Immunogen</b>	Synthetic peptides corresponding to SULT1E1 (sulfotransferase family 1E, estrogen-preferring, member 1) The peptide sequence was selected from the middle region of SULT1E1. Peptide sequence LMVAGHPNPGSFPEFVEKFMQQQVPYGSWYKHVKSWWEKKGKSPRVLFLFY The peptide sequence for this immunogen was taken from within the described region.

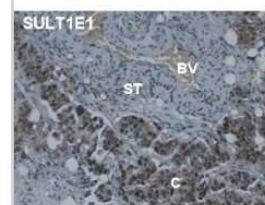
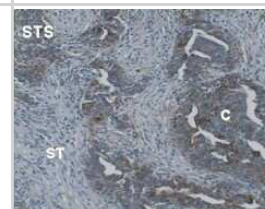
<b>Product Application Details</b>	
<b>Applications</b>	Western Blot, Immunohistochemistry, Immunohistochemistry-Paraffin
<b>Recommended Dilutions</b>	Western Blot 1.0 ug/ml, Immunohistochemistry 1:10-1:500, Immunohistochemistry-Paraffin
<b>Application Notes</b>	Immunohistochemistry-Paraffin was reported in scientific literature.

## Images

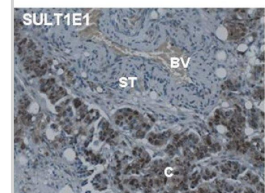
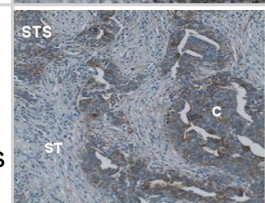
Western Blot: Cytosolic Sulfotransferase 1E1/SULT1E1 Antibody [NBP1-56977] - HepG2 cell lysate, concentration 0.2-1 ug/ml.



Immunohistochemistry-Paraffin: Cytosolic Sulfotransferase 1E1/SULT1E1 Antibody [NBP1-56977] - STS (steroid sulfatase) and Cytosolic Sulfotransferase 1E1/SULT1E1 (estrogen sulfotransferase 1E1) in high-grade serous ovarian carcinoma. Immunoreactivity of STS and Cytosolic Sulfotransferase 1E1/SULT1E1 is demonstrated in paraffin-embedded tissue sections from ovarian carcinoma. Sections were probed with an antibody against STS and Cytosolic Sulfotransferase 1E1/SULT1E1 (NBP1-56977), respectively. STS and SULT1E immunoreactivity is visible in the cancer cells (C). ST = tumor stroma, BV = blood vessel. Image collected and cropped by CiteAb from the following publication (<https://www.hindawi.com/journals/jdd/2013/957605/>), licensed under a CC-BY license.



STS (steroid sulfatase) and SULT1E1 (estrogen sulfotransferase 1E1) in high-grade serous ovarian carcinoma. Immunoreactivity of STS and SULT1E1 is demonstrated in paraffin-embedded tissue sections from ovarian carcinoma. Sections were probed with an antibody against STS (GTX 105498, GeneTex, Irvine, CA) and SULT1E1 (NBP1-56977, Novus Biol., Littleton, CO), respectively. STS and SULT1E immunoreactivity is visible in the cancer cells (C). ST = tumor stroma, BV = blood vessel.



## Publications

Vulpio C, Bossola M, Di Stasio E et al. Histology and immunohistochemistry of the parathyroid glands in renal secondary hyperparathyroidism refractory to vitamin D or cinacalcet therapy. *Eur J Endocrinol.* 2013-04-29 [PMID: 23520248] (IHC-P, Human)

Secky L, Svoboda M, Klameth L et al. The sulfatase pathway for estrogen formation: targets for the treatment and diagnosis of hormone-associated tumors. *J Drug Deliv* 2013-01-01 [PMID: 23476785] (IHC-P, Human)



### **Novus Biologicals USA**

10730 E. Briarwood Avenue  
Centennial, CO 80112  
USA  
Phone: 303.730.1950  
Toll Free: 1.888.506.6887  
Fax: 303.730.1966  
nb-customerservice@bio-techne.com

### **Bio-Techne Canada**

21 Canmotor Ave  
Toronto, ON M8Z 4E6  
Canada  
Phone: 905.827.6400  
Toll Free: 855.668.8722  
Fax: 905.827.6402  
canada.inquires@bio-techne.com

### **Bio-Techne Ltd**

19 Barton Lane  
Abingdon Science Park  
Abingdon, OX14 3NB, United Kingdom  
Phone: (44) (0) 1235 529449  
Free Phone: 0800 37 34 15  
Fax: (44) (0) 1235 533420  
info.EMEA@bio-techne.com

### **General Contact Information**

www.novusbio.com  
Technical Support: nb-technical@bio-techne.com  
Orders: nb-customerservice@bio-techne.com  
General: novus@novusbio.com

### **Products Related to NBP1-56977**

---

HAF008	Goat anti-Rabbit IgG Secondary Antibody [HRP]
NB7160	Goat anti-Rabbit IgG (H+L) Secondary Antibody [HRP]
NBP2-24891	Rabbit IgG Isotype Control
NBP1-84786PEP	Cytosolic Sulfotransferase 1E1/SULT1E1 Recombinant Protein Antigen

---

### **Limitations**

This product is for research use only and is not approved for use in humans or in clinical diagnosis. Primary Antibodies are guaranteed for 1 year from date of receipt.

For more information on our 100% guarantee, please visit [www.novusbio.com/guarantee](http://www.novusbio.com/guarantee)

Earn gift cards/discounts by submitting a review: [www.novusbio.com/reviews/submit/NBP1-56977](http://www.novusbio.com/reviews/submit/NBP1-56977)

Earn gift cards/discounts by submitting a publication using this product:  
[www.novusbio.com/publications](http://www.novusbio.com/publications)

