

Product Datasheet

Lactate Dehydrogenase B Antibody - BSA Free NBP1-55415

Unit Size: 100 ul

Store at 4C short term. Aliquot and store at -20C long term. Avoid freeze-thaw cycles.

www.novusbio.com



technical@novusbio.com

Publications: 1

Protocols, Publications, Related Products, Reviews, Research Tools and Images at:
www.novusbio.com/NBP1-55415

Updated 2/21/2025 v.20.1

Earn rewards for product
reviews and publications.

Submit a publication at www.novusbio.com/publications

Submit a review at www.novusbio.com/reviews/destination/NBP1-55415



NBP1-55415**Lactate Dehydrogenase B Antibody - BSA Free****Product Information**

Unit Size	100 ul
Concentration	0.5 mg/ml
Storage	Store at 4C short term. Aliquot and store at -20C long term. Avoid freeze-thaw cycles.
Clonality	Polyclonal
Preservative	0.09% Sodium Azide
Isotype	IgG
Purity	Affinity purified
Buffer	PBS, 2% Sucrose
Target Molecular Weight	37 kDa

Product Description

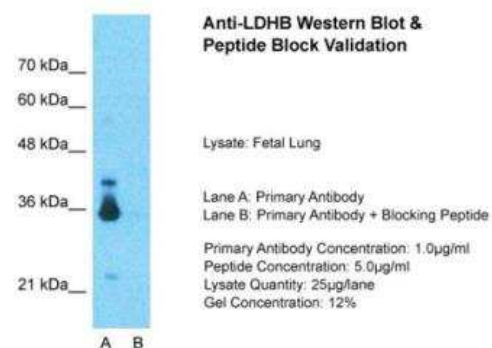
Description	The addition of 50% glycerol is optional for those storing this antibody at -20C and not aliquoting smaller units. However, please note that glycerol may interrupt some downstream antibody applications and should be added with caution.
Host	Rabbit
Gene ID	3945
Gene Symbol	LDHB
Species	Human
Immunogen	The immunogen is a synthetic peptide directed towards the C-terminal region of Human Lactate Dehydrogenase B. Peptide Sequence MYGIENEVFLSLPCILNARGLTSVINQKLKDDEVAQLKKSADTLWDIQKD. The peptide sequence for this immunogen was taken from within the described region.

Product Application Details

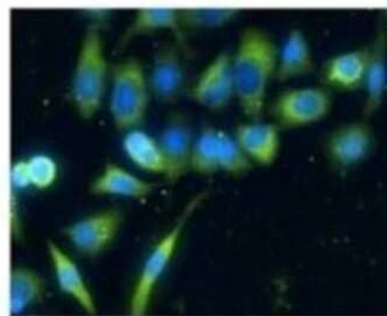
Applications	Western Blot, Immunocytochemistry/ Immunofluorescence, Immunohistochemistry, Immunohistochemistry-Paraffin, Immunoprecipitation
Recommended Dilutions	Western Blot 1.0 ug/ml, Immunohistochemistry, Immunocytochemistry/ Immunofluorescence 1:10-1:2000, Immunoprecipitation, Immunohistochemistry-Paraffin

Images

Western Blot: Lactate Dehydrogenase B Antibody [NBP1-55415] -
Sample Tissue: Human Fetal Lung, Lane A: Primary Antibody, Lane B:
Primary Antibody + Blocking Peptide, Primary Antibody Concentration:
1ug/ml, Peptide Concentration: 5ug/ml, Lysate Quantity: 25ug/lane/lane,
Gel Concentration: 0.12

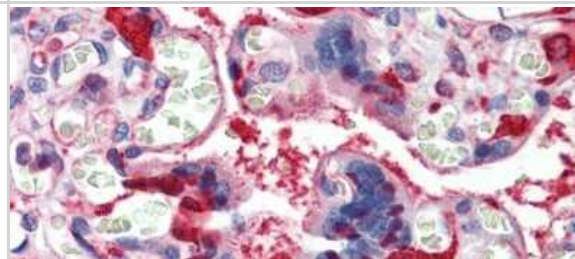


Immunocytochemistry/Immunofluorescence: Lactate Dehydrogenase B Antibody [NBP1-55415] - Human lung adenocarcinoma cell line A549, 2.5.



Green : LDHB
Blue: DAPI

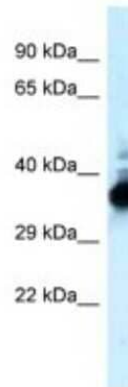
Immunohistochemistry: Lactate Dehydrogenase B Antibody [NBP1-55415] - Human Placenta Antibody Concentration: 5 ug/ml.



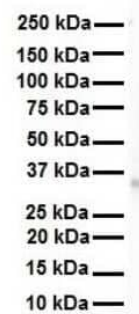
Western Blot: Lactate Dehydrogenase B Antibody [NBP1-55415] - Human pancreatic cancer cell line MiaPaca-2 and Panc-1, concentration 1 ug/ml.



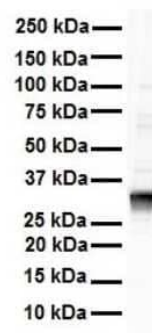
Western Blot: Lactate Dehydrogenase B Antibody [NBP1-55415] - 721_B Whole Cell, concentration 1 ug/ml.



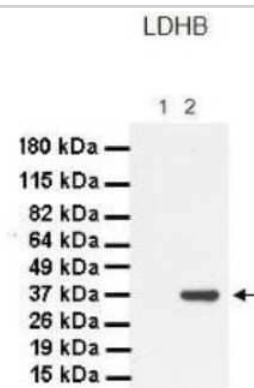
Western Blot: Lactate Dehydrogenase B Antibody [NBP1-55415] -
Antibody Titration: 1 ug/ml Human 721_B.



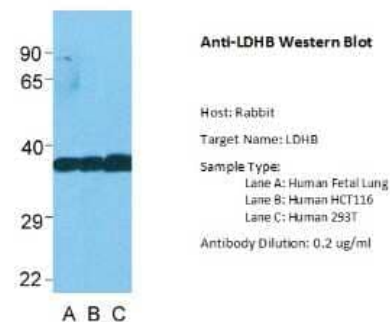
Western Blot: Lactate Dehydrogenase B Antibody [NBP1-55415] -
Antibody Titration: 1 ug/ml Human Raji.



Western Blot: Lactate Dehydrogenase B Antibody [NBP1-55415] -
Lanes: 1. 30 ug MiaPaca-2 cell lysate 2. 30 ug Panc-1 cell lysate
Primary, Antibody Dilution: 1 : 1000 Secondary Antibody: Goat anti-
Rabbit HRP Secondary, Antibody Dilution: 1 : 4000 Gene name: LDHB.



Western Blot: Lactate Dehydrogenase B Antibody [NBP1-55415] - Lane
A: Human Fetal Lung Lane B: Human HCT116 Lane C: Human 293T,
Antibody Dilution: 0.2 ug/ml.



Publications

Schild M, Ruhs A, Beiter T et al. Basal and exercise induced label-free quantitative protein profiling of m. vastus lateralis in trained and untrained individuals J Proteomics 2015-04-06 [PMID: 25857276] (WB, Human)



Novus Biologicals USA

10730 E. Briarwood Avenue
Centennial, CO 80112
USA
Phone: 303.730.1950
Toll Free: 1.888.506.6887
Fax: 303.730.1966
nb-customerservice@bio-techne.com

Bio-Techne Canada

21 Canmotor Ave
Toronto, ON M8Z 4E6
Canada
Phone: 905.827.6400
Toll Free: 855.668.8722
Fax: 905.827.6402
canada.inquires@bio-techne.com

Bio-Techne Ltd

19 Barton Lane
Abingdon Science Park
Abingdon, OX14 3NB, United Kingdom
Phone: (44) (0) 1235 529449
Free Phone: 0800 37 34 15
Fax: (44) (0) 1235 533420
info.EMEA@bio-techne.com

General Contact Information

www.novusbio.com
Technical Support: nb-technical@bio-techne.com
Orders: nb-customerservice@bio-techne.com
General: novus@novusbio.com

Products Related to NBP1-55415

HAF008	Goat anti-Rabbit IgG Secondary Antibody [HRP]
NB7160	Goat anti-Rabbit IgG (H+L) Secondary Antibody [HRP]
NBP2-24891	Rabbit IgG Isotype Control
NBP2-38131PEP	Lactate Dehydrogenase B Recombinant Protein Antigen

Limitations

This product is for research use only and is not approved for use in humans or in clinical diagnosis. Primary Antibodies are guaranteed for 1 year from date of receipt.

For more information on our 100% guarantee, please visit www.novusbio.com/guarantee

Earn gift cards/discounts by submitting a review: www.novusbio.com/reviews/submit/NBP1-55415

Earn gift cards/discounts by submitting a publication using this product:
www.novusbio.com/publications

