

# Product Datasheet

## Glutamate Dehydrogenase Antibody - BSA Free NBP1-54962

Unit Size: 100 ul

Store at 4C short term. Aliquot and store at -20C long term. Avoid freeze-thaw cycles.

[www.novusbio.com](http://www.novusbio.com)



[technical@novusbio.com](mailto:technical@novusbio.com)

Protocols, Publications, Related Products, Reviews, Research Tools and Images at:  
[www.novusbio.com/NBP1-54962](http://www.novusbio.com/NBP1-54962)

Updated 2/21/2025 v.20.1

Earn rewards for product  
reviews and publications.

Submit a publication at [www.novusbio.com/publications](http://www.novusbio.com/publications)

Submit a review at [www.novusbio.com/reviews/destination/NBP1-54962](http://www.novusbio.com/reviews/destination/NBP1-54962)



**NBP1-54962****Glutamate Dehydrogenase Antibody - BSA Free**

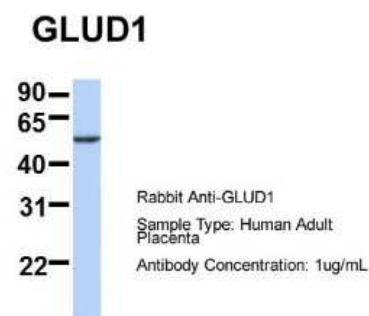
Product Information	
Unit Size	100 ul
Concentration	0.5 mg/ml
Storage	Store at 4C short term. Aliquot and store at -20C long term. Avoid freeze-thaw cycles.
Clonality	Polyclonal
Preservative	0.09% Sodium Azide
Isotype	IgG
Purity	Affinity purified
Buffer	PBS, 2% Sucrose
Target Molecular Weight	56 kDa

Product Description	
Description	The addition of 50% glycerol is optional for those storing this antibody at -20C and not aliquoting smaller units. However, please note that glycerol may interrupt some downstream antibody applications and should be added with caution.
Host	Rabbit
Gene ID	2746
Gene Symbol	GLUD1
Species	Human, Rat
Marker	Mitochondria Marker
Immunogen	Synthetic peptides corresponding to GLUD1(glutamate dehydrogenase 1) The peptide sequence was selected from the N terminal of GLUD1 (NP_005262). Peptide sequence: AKAGVKINPKNYTDNELEKITRRFTMELAKKGFIPGIDVPAPDMSTGER. The peptide sequence for this immunogen was taken from within the described region.

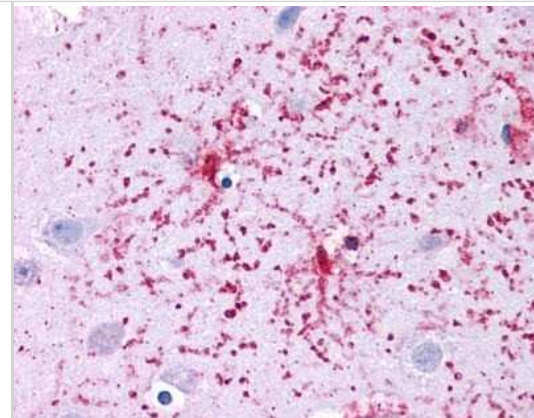
Product Application Details	
Applications	Western Blot, Immunohistochemistry, Immunohistochemistry-Paraffin
Recommended Dilutions	Western Blot 1.0 ug/ml, Immunohistochemistry 1:10-1:500, Immunohistochemistry-Paraffin 1:10-1:500

**Images**

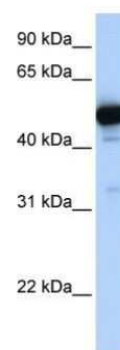
Western Blot: Glutamate Dehydrogenase Antibody [NBP1-54962] -  
Sample Type: Human Adult Placenta Antibody Dilution: 1.0 ug/ml



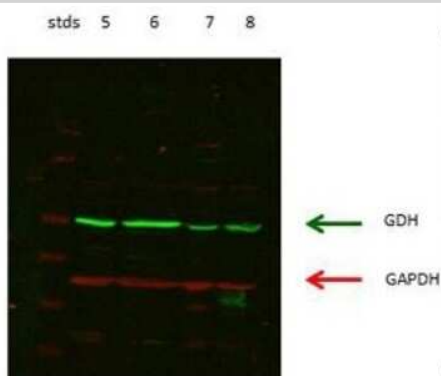
Immunohistochemistry-Paraffin: Glutamate Dehydrogenase Antibody [NBP1-54962] - Human brain cortex.



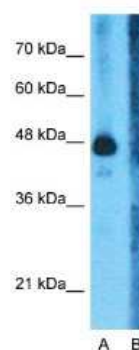
Western Blot: Glutamate Dehydrogenase Antibody [NBP1-54962] - Human Fetal Liver Lysate, concentration 1ug/ml.



Western Blot: Glutamate Dehydrogenase Antibody [NBP1-54962] - lanes 5: rat kidney cortex lanes 6: rat kidney proximal tubules prepped from cortex lanes 7: LLC PK-F+ pig kidney proximal tubule tissue culture lysate lanes 8: rat brain supernatant.



Western Blot: Glutamate Dehydrogenase Antibody [NBP1-54962] - Sample Tissue: Human Fetal Liver, Lane A: Primary Antibody, Lane B: Primary Antibody + Blocking Peptide, Primary Antibody Concentration: 1ug/ml, Peptide Concentration: 5ug/ml, Lysate Quantity: 25ug/lane/lane, Gel Concentration: 0.12



#### Anti-GLUD1 Western Blot & Peptide Block Validation

Lot Number: QC13845

Lysate: Fetal Liver

Lane A: Primary Antibody

Lane B: Primary Antibody + Blocking Peptide

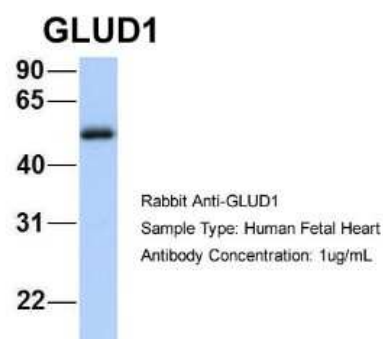
Primary Antibody Concentration: 1.0µg/ml

Peptide Concentration: 5.0µg/ml

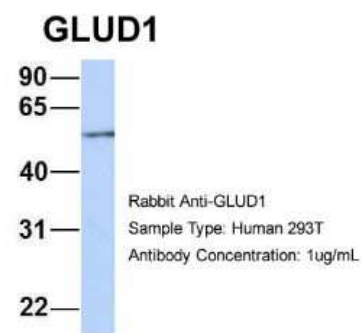
Lysate Quantity: 25µg/lane

Gel Concentration: 12%

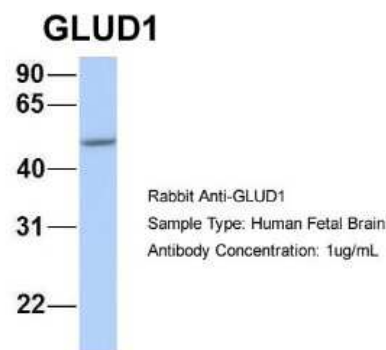
Western Blot: Glutamate Dehydrogenase Antibody [NBP1-54962] -  
Sample Type: Human Fetal Heart Antibody Dilution: 1.0 ug/ml



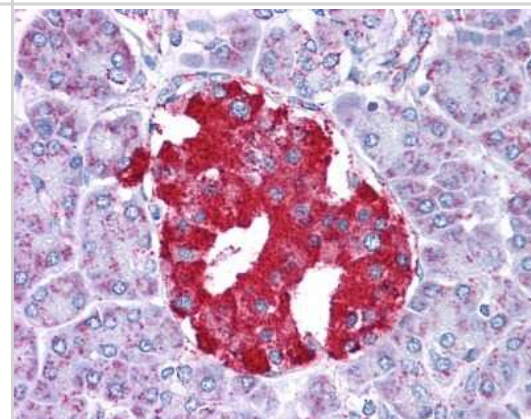
Western Blot: Glutamate Dehydrogenase Antibody [NBP1-54962] -  
Sample Type: 293T Antibody Dilution: 1.0 ug/ml GLUD1 is supported by  
BioGPS gene expression data to be expressed in HEK293T



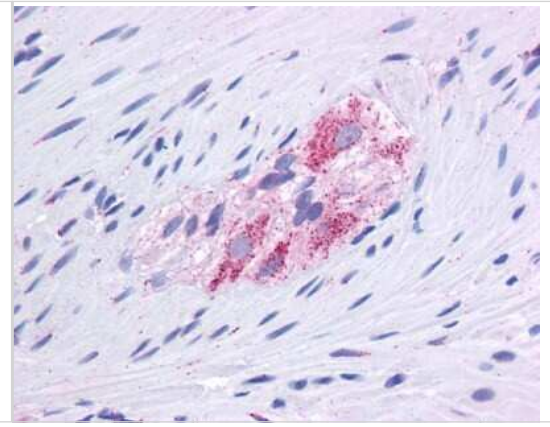
Western Blot: Glutamate Dehydrogenase Antibody [NBP1-54962] -  
Sample Type: Human Fetal Brain Antibody Dilution: 1.0 ug/ml



Immunohistochemistry-Paraffin: Glutamate Dehydrogenase Antibody  
[NBP1-54962] - Human pancreas tissue.



Immunohistochemistry-Paraffin: Glutamate Dehydrogenase Antibody [NBP1-54962] - Human kidney, renal tubular epithelium in cortex.





### **Novus Biologicals USA**

10730 E. Briarwood Avenue  
Centennial, CO 80112  
USA  
Phone: 303.730.1950  
Toll Free: 1.888.506.6887  
Fax: 303.730.1966  
nb-customerservice@bio-techne.com

### **Bio-Techne Canada**

21 Canmotor Ave  
Toronto, ON M8Z 4E6  
Canada  
Phone: 905.827.6400  
Toll Free: 855.668.8722  
Fax: 905.827.6402  
canada.inquires@bio-techne.com

### **Bio-Techne Ltd**

19 Barton Lane  
Abingdon Science Park  
Abingdon, OX14 3NB, United Kingdom  
Phone: (44) (0) 1235 529449  
Free Phone: 0800 37 34 15  
Fax: (44) (0) 1235 533420  
info.EMEA@bio-techne.com

### **General Contact Information**

[www.novusbio.com](http://www.novusbio.com)  
Technical Support: nb-technical@bio-techne.com  
Orders: nb-customerservice@bio-techne.com  
General: novus@novusbio.com

### **Products Related to NBP1-54962**

HAF008	Goat anti-Rabbit IgG Secondary Antibody [HRP]
NB7160	Goat anti-Rabbit IgG (H+L) Secondary Antibody [HRP]
NBP2-24891	Rabbit IgG Isotype Control
NBP2-51666-0.1mg	Recombinant Human Glutamate Dehydrogenase His Protein

### **Limitations**

This product is for research use only and is not approved for use in humans or in clinical diagnosis. Primary Antibodies are guaranteed for 1 year from date of receipt.

For more information on our 100% guarantee, please visit [www.novusbio.com/guarantee](http://www.novusbio.com/guarantee)

Earn gift cards/discounts by submitting a review: [www.novusbio.com/reviews/submit/NBP1-54962](http://www.novusbio.com/reviews/submit/NBP1-54962)

Earn gift cards/discounts by submitting a publication using this product:  
[www.novusbio.com/publications](http://www.novusbio.com/publications)

