

Product Datasheet

Glutamate Dehydrogenase Antibody - BSA Free NBP1-54961

Unit Size: 100 ul

Store at 4C short term. Aliquot and store at -20C long term. Avoid freeze-thaw cycles.

www.novusbio.com



technical@novusbio.com

Publications: 1

Protocols, Publications, Related Products, Reviews, Research Tools and Images at:
www.novusbio.com/NBP1-54961

Updated 2/21/2025 v.20.1

Earn rewards for product
reviews and publications.

Submit a publication at www.novusbio.com/publications

Submit a review at www.novusbio.com/reviews/destination/NBP1-54961



NBP1-54961**Glutamate Dehydrogenase Antibody - BSA Free**

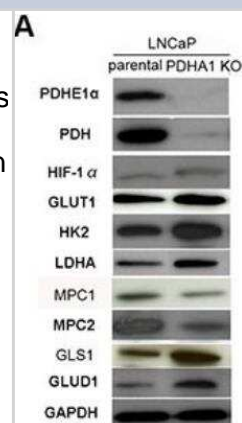
Product Information	
Unit Size	100 ul
Concentration	0.5 mg/ml
Storage	Store at 4C short term. Aliquot and store at -20C long term. Avoid freeze-thaw cycles.
Clonality	Polyclonal
Preservative	0.09% Sodium Azide
Isotype	IgG
Purity	Affinity purified
Buffer	PBS, 2% Sucrose
Target Molecular Weight	56 kDa

Product Description	
Description	The addition of 50% glycerol is optional for those storing this antibody at -20C and not aliquoting smaller units. However, please note that glycerol may interrupt some downstream antibody applications and should be added with caution.
Host	Rabbit
Gene ID	2746
Gene Symbol	GLUD1
Species	Human, Rat
Marker	Mitochondria Marker
Immunogen	Synthetic peptides corresponding to GLUD1(glutamate dehydrogenase 1) The peptide sequence was selected from the N terminal of GLUD1. Peptide sequence EGFFDRGASIVEDKLVEDLRTRESEEQKRNRVRGILRIIKPCNHVLSLSF. The peptide sequence for this immunogen was taken from within the described region.

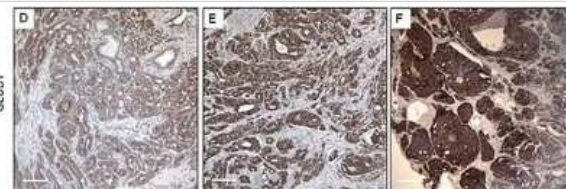
Product Application Details	
Applications	Western Blot, Immunohistochemistry, Immunohistochemistry-Paraffin
Recommended Dilutions	Western Blot 1.0 ug/ml, Immunohistochemistry 1:10-1:500, Immunohistochemistry-Paraffin 1:10-1:500

Images

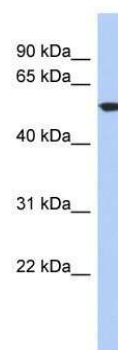
Western Blot: Glutamate Dehydrogenase Antibody [NBP1-54961] - The results of western blotting and RT-PCR assayA. shows Western blotting results, where the PDHA1 protein expression in the parental LNCaP cells is strongly positive, but its expression in the PDHA1 KO cells is almost negative with two different PDHA1 antibodies. Comparatively, the protein expression of the MPC1 and MPC2 is comparatively decreased and the protein expression of the GLUT1, HK2, LDHA, HIF1alpha, GLS1 and GLUD1 (Glutamate Dehydrogenase) is increased in the LNCaP PDHA1 KO cells. GAPDH was added as a loading control. Image collected and cropped by CiteAb from the following publication (www.oncotarget.com/lookup/doi/10.18632/oncotarget.10782) licensed under a CC-BY license.



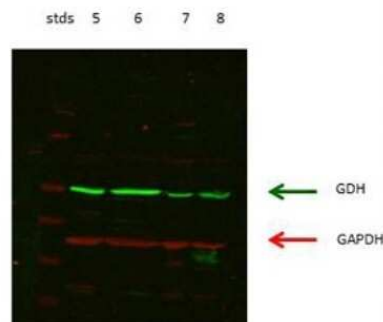
Immunohistochemistry: Glutamate Dehydrogenase Antibody [NBP1-54961] - GLS1 and GLUD1 (Glutamate Dehydrogenase) are over-expressed in prostate cancers and associated with poor survival. Immunohistochemical staining of GLUD1 in human prostate cancers with Gleason score 4 (D), 7 (E). and 9 (F). Image collected and cropped by CiteAb from the following publication (www.oncotarget.com/lookup/doi/10.18632/oncotarget.10782) licensed under a CC-BY license.



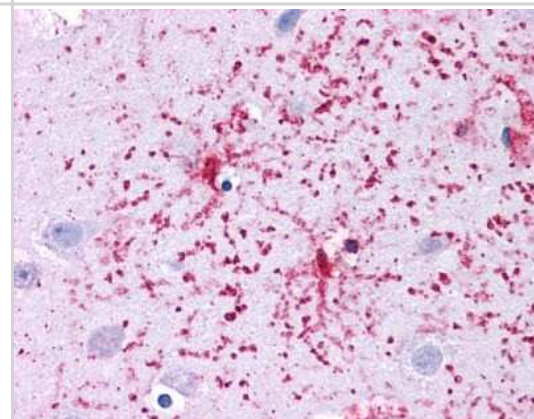
Western Blot: Glutamate Dehydrogenase Antibody [NBP1-54961] - HT1080 cell lysate, concentration 1ug/ml.



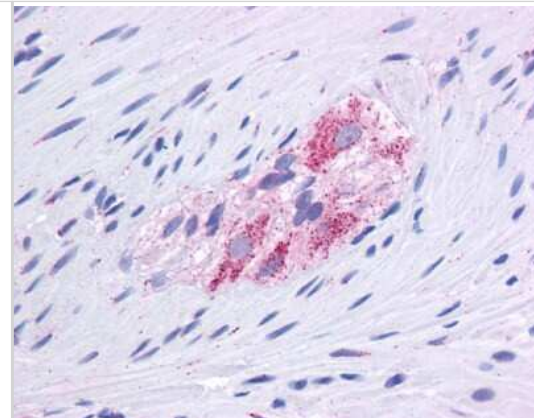
Western Blot: Glutamate Dehydrogenase Antibody [NBP1-54961] - lanes 5: rat kidney cortex lanes 6: rat kidney proximal tubules prepped from cortex lanes 7: LLC PK-F+ pig kidney proximal tubule tissue culture lysate lanes 8: rat brain supernatant



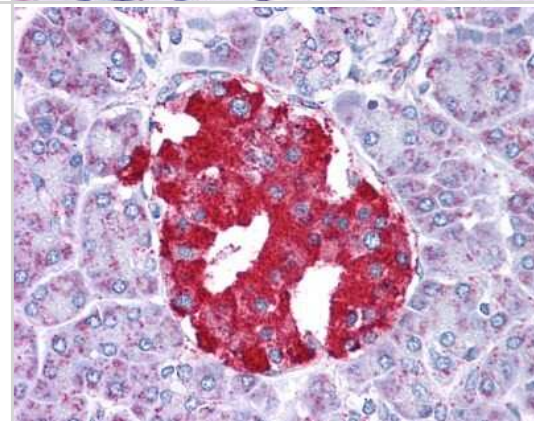
Immunohistochemistry-Paraffin: Glutamate Dehydrogenase Antibody [NBP1-54961] - Human colon tissue.



Immunohistochemistry-Paraffin: Glutamate Dehydrogenase Antibody [NBP1-54961] - Human kidney, renal tubular epithelium in cortex.



Immunohistochemistry-Paraffin: Glutamate Dehydrogenase Antibody [NBP1-54961] - Human pancreas tissue



Publications

Li Y, Li X, et al. PDHA1 gene knockout in prostate cancer cells results in metabolic reprogramming towards greater glutamine dependence. Oncotarget 2016-08-16 [PMID: 27462778] (IF/IHC, Human)



Novus Biologicals USA

10730 E. Briarwood Avenue
Centennial, CO 80112
USA
Phone: 303.730.1950
Toll Free: 1.888.506.6887
Fax: 303.730.1966
nb-customerservice@bio-techne.com

Bio-Techne Canada

21 Canmotor Ave
Toronto, ON M8Z 4E6
Canada
Phone: 905.827.6400
Toll Free: 855.668.8722
Fax: 905.827.6402
canada.inquires@bio-techne.com

Bio-Techne Ltd

19 Barton Lane
Abingdon Science Park
Abingdon, OX14 3NB, United Kingdom
Phone: (44) (0) 1235 529449
Free Phone: 0800 37 34 15
Fax: (44) (0) 1235 533420
info.EMEA@bio-techne.com

General Contact Information

www.novusbio.com
Technical Support: nb-technical@bio-techne.com
Orders: nb-customerservice@bio-techne.com
General: novus@novusbio.com

Products Related to NBP1-54961

HAF008	Goat anti-Rabbit IgG Secondary Antibody [HRP]
NB7160	Goat anti-Rabbit IgG (H+L) Secondary Antibody [HRP]
NBP2-24891	Rabbit IgG Isotype Control
NBP2-51666-0.1mg	Recombinant Human Glutamate Dehydrogenase His Protein

Limitations

This product is for research use only and is not approved for use in humans or in clinical diagnosis. Primary Antibodies are guaranteed for 1 year from date of receipt.

For more information on our 100% guarantee, please visit www.novusbio.com/guarantee

Earn gift cards/discounts by submitting a review: www.novusbio.com/reviews/submit/NBP1-54961

Earn gift cards/discounts by submitting a publication using this product:
www.novusbio.com/publications

