

Product Datasheet

beta-Catenin Antibody (12F7) [Biotin] NBP1-54467B

Unit Size: 0.1 ml

Store at 4C in the dark.

www.novusbio.com



technical@novusbio.com

Protocols, Publications, Related Products, Reviews, Research Tools and Images at:
www.novusbio.com/NBP1-54467B

Updated 10/23/2024 v.20.1

Earn rewards for product
reviews and publications.

Submit a publication at www.novusbio.com/publications

Submit a review at www.novusbio.com/reviews/destination/NBP1-54467B



NBP1-54467B

beta-Catenin Antibody (12F7) [Biotin]

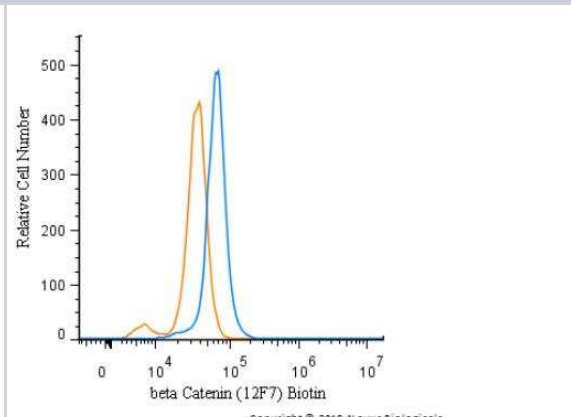
Product Information	
Unit Size	0.1 ml
Concentration	Please see the vial label for concentration. If unlisted please contact technical services.
Storage	Store at 4C in the dark.
Clonality	Monoclonal
Clone	12F7
Preservative	0.05% Sodium Azide
Isotype	IgG1
Conjugate	Biotin
Purity	Protein G purified
Buffer	PBS

Product Description	
Host	Mouse
Gene ID	1499
Gene Symbol	CTNNB1
Species	Human, Mouse, Rat, Duck, Chicken, Primate
Reactivity Notes	Use in Duck reported in scientific literature (PMID:32692763).
Marker	Epithelial Cell Marker, Adherens Junction Marker
Immunogen	Recombinant chicken beta Catenin fused to maltose binding protein. [UniProt# O42486]

Product Application Details	
Applications	Western Blot, Simple Western, Flow Cytometry, Flow (Intracellular), Immunocytochemistry/ Immunofluorescence, Immunohistochemistry, Immunohistochemistry-Paraffin, Immunoprecipitation
Recommended Dilutions	Western Blot, Simple Western, Flow Cytometry, Immunohistochemistry, Immunocytochemistry/ Immunofluorescence, Immunoprecipitation, Immunohistochemistry-Paraffin, Flow (Intracellular)
Application Notes	Optimal dilution of this antibody should be experimentally determined.

Images

Flow Cytometry: beta-Catenin Antibody (12F7) [Biotin] [NBP1-54467B] - An intracellular stain was performed on SK-MEL-28 cells with beta-Catenin Antibody [12F7] NBP1-54467B (blue) and a matched isotype control (orange). Both antibodies were conjugated to Biotin. Cells were fixed with 4% PFA and then permeabilized with 0.1% saponin. Cells were incubated in an antibody dilution of 2.5 ug/mL for 30 minutes at room temperature, followed by Streptavidin - R-Phycoerythrin Protein (2012-1000, Novus Biologicals).





Novus Biologicals USA

10730 E. Briarwood Avenue
Centennial, CO 80112
USA
Phone: 303.730.1950
Toll Free: 1.888.506.6887
Fax: 303.730.1966
nb-customerservice@bio-techne.com

Bio-Techne Canada

21 Canmotor Ave
Toronto, ON M8Z 4E6
Canada
Phone: 905.827.6400
Toll Free: 855.668.8722
Fax: 905.827.6402
canada.inquires@bio-techne.com

Bio-Techne Ltd

19 Barton Lane
Abingdon Science Park
Abingdon, OX14 3NB, United Kingdom
Phone: (44) (0) 1235 529449
Free Phone: 0800 37 34 15
Fax: (44) (0) 1235 533420
info.EMEA@bio-techne.com

General Contact Information

www.novusbio.com
Technical Support: nb-technical@bio-techne.com
Orders: nb-customerservice@bio-techne.com
General: novus@novusbio.com

Products Related to NBP1-54467B

NBP2-29370	Streptavidin Native Protein
NBP1-96888	Mouse IgG1 Isotype Control (MG1) [Biotin]
NBP2-61628PEP	beta-Catenin Recombinant Protein Antigen
DYC1329-2	beta-Catenin [Biotin]

Limitations

This product is for research use only and is not approved for use in humans or in clinical diagnosis. Primary Antibodies are guaranteed for 1 year from date of receipt.

For more information on our 100% guarantee, please visit www.novusbio.com/guarantee

Earn gift cards/discounts by submitting a review: www.novusbio.com/reviews/submit/NBP1-54467B

Earn gift cards/discounts by submitting a publication using this product:
www.novusbio.com/publications

