

# Product Datasheet

## CBS Antibody - BSA Free NBP1-52850

Unit Size: 100 ul

Store at 4C short term. Aliquot and store at -20C long term. Avoid freeze-thaw cycles.

[www.novusbio.com](http://www.novusbio.com)



[technical@novusbio.com](mailto:technical@novusbio.com)

Protocols, Publications, Related Products, Reviews, Research Tools and Images at:  
[www.novusbio.com/NBP1-52850](http://www.novusbio.com/NBP1-52850)

Updated 2/21/2025 v.20.1

Earn rewards for product  
reviews and publications.

Submit a publication at [www.novusbio.com/publications](http://www.novusbio.com/publications)

Submit a review at [www.novusbio.com/reviews/destination/NBP1-52850](http://www.novusbio.com/reviews/destination/NBP1-52850)



**NBP1-52850**

CBS Antibody - BSA Free

**Product Information**

|                      |  |
|----------------------|--|
| <b>Unit Size</b>     | 100 ul   |
| <b>Concentration</b> | 1 mg/ml  |
| <b>Storage</b>       | Store at 4C short term. Aliquot and store at -20C long term. Avoid freeze-thaw cycles. |
| <b>Clonality</b>     | Polyclonal   |
| <b>Preservative</b>  | 0.09% Sodium Azide   |
| <b>Isotype</b>       | IgG  |
| <b>Purity</b>        | Protein A purified   |
| <b>Buffer</b>        | PBS, 2% Sucrose  |

**Product Description**

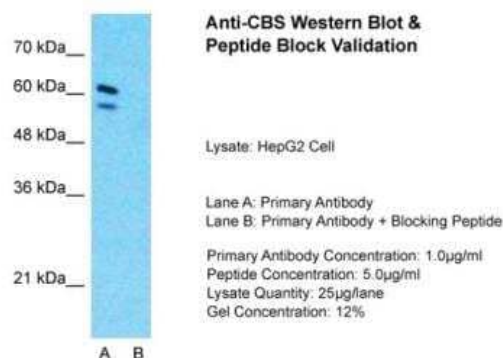
|                    |   |
|--------------------|---|
| <b>Description</b> | The addition of 50% glycerol is optional for those storing this antibody at -20C and not aliquoting smaller units. However, please note that glycerol may interrupt some downstream antibody applications and should be added with caution.   |
| <b>Host</b>        | Rabbit  |
| <b>Gene ID</b>     | 875   |
| <b>Gene Symbol</b> | CBS   |
| <b>Species</b>     | Human, Mouse, Rat   |
| <b>Immunogen</b>   | Synthetic peptides corresponding to CBS(cystathionine-beta-synthase) The peptide sequence was selected from the N terminal of CBS. Peptide sequence RCIIVMPEKMSSEKVDVLRALGAEIVRTPTNARFDSPEHSVGVAVRLKNE. The peptide sequence for this immunogen was taken from within the described region. |

**Product Application Details**

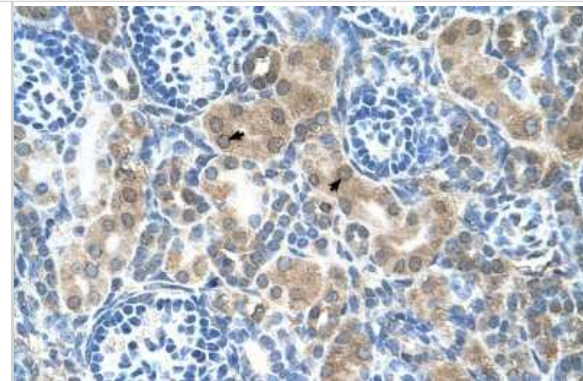
|                              |   |
|------------------------------|---|
| <b>Applications</b>          | Western Blot, Immunohistochemistry, Immunohistochemistry-Paraffin                                 |
| <b>Recommended Dilutions</b> | Western Blot 1.0 ug/ml, Immunohistochemistry 1:10-1:500, Immunohistochemistry-Paraffin 1:10-1:500 |

**Images**

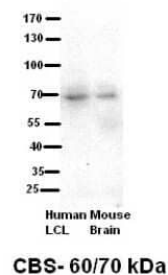
Western Blot: CBS Antibody [NBP1-52850] - HepG2 Lane A: Primary Antibody Lane B: Primary Antibody + Blocking Peptide Primary Antibody Concentration: 1 ug/ml Peptide Concentration: 5 ug/ml lysate Quantity: 25ug/ Lane/ Lane Gel Concentration: 0.12.



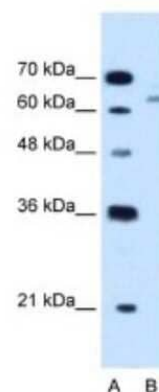
Immunohistochemistry-Paraffin: CBS Antibody [NBP1-52850] - Human Kidney tissue, Epithelial cells of renal tubule (Indicated with Arrows) 4-8 ug/ml.



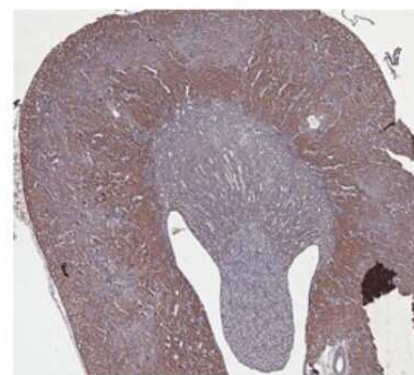
Western Blot: CBS Antibody [NBP1-52850] - Human kidney lysate, concentration 4-8ug/ml.



Western Blot: CBS Antibody [NBP1-52850] - HepG2 cell lysate, concentration 1.25 ug/ml.



Immunohistochemistry-Paraffin: CBS Antibody [NBP1-52850] - Mouse Brain tissue, 4-8ug/ml.





### **Novus Biologicals USA**

10730 E. Briarwood Avenue  
Centennial, CO 80112  
USA  
Phone: 303.730.1950  
Toll Free: 1.888.506.6887  
Fax: 303.730.1966  
nb-customerservice@bio-techne.com

### **Bio-Techne Canada**

21 Canmotor Ave  
Toronto, ON M8Z 4E6  
Canada  
Phone: 905.827.6400  
Toll Free: 855.668.8722  
Fax: 905.827.6402  
canada.inquires@bio-techne.com

### **Bio-Techne Ltd**

19 Barton Lane  
Abingdon Science Park  
Abingdon, OX14 3NB, United Kingdom  
Phone: (44) (0) 1235 529449  
Free Phone: 0800 37 34 15  
Fax: (44) (0) 1235 533420  
info.EMEA@bio-techne.com

### **General Contact Information**

[www.novusbio.com](http://www.novusbio.com)  
Technical Support: nb-technical@bio-techne.com  
Orders: nb-customerservice@bio-techne.com  
General: novus@novusbio.com

### **Products Related to NBP1-52850**

---

|                    |   |
|--------------------|---|
| HAF008             | Goat anti-Rabbit IgG Secondary Antibody [HRP]       |
| NB7160             | Goat anti-Rabbit IgG (H+L) Secondary Antibody [HRP] |
| NBP2-24891         | Rabbit IgG Isotype Control                          |
| H00000875-P01-10ug | Recombinant Human CBS GST (N-Term) Protein          |

---

### **Limitations**

This product is for research use only and is not approved for use in humans or in clinical diagnosis. Primary Antibodies are guaranteed for 1 year from date of receipt.

For more information on our 100% guarantee, please visit [www.novusbio.com/guarantee](http://www.novusbio.com/guarantee)

Earn gift cards/discounts by submitting a review: [www.novusbio.com/reviews/submit/NBP1-52850](http://www.novusbio.com/reviews/submit/NBP1-52850)

Earn gift cards/discounts by submitting a publication using this product:  
[www.novusbio.com/publications](http://www.novusbio.com/publications)

