

Product Datasheet

Sodium Potassium ATPase Beta 1 Antibody NBP1-51987

Unit Size: 0.1 mg

Store at -20C. Avoid freeze-thaw cycles.

www.novusbio.com



technical@novusbio.com

Publications: 2

Protocols, Publications, Related Products, Reviews, Research Tools and Images at:
www.novusbio.com/NBP1-51987

Updated 10/23/2024 v.20.1

Earn rewards for product
reviews and publications.

Submit a publication at www.novusbio.com/publications

Submit a review at www.novusbio.com/reviews/destination/NBP1-51987



NBP1-51987**Sodium Potassium ATPase Beta 1 Antibody**

Product Information	
Unit Size	0.1 mg
Concentration	0.5 mg/ml
Storage	Store at -20C. Avoid freeze-thaw cycles.
Clonality	Polyclonal
Preservative	0.02% Sodium Azide
Isotype	IgG
Purity	Immunogen affinity purified
Buffer	Tris saline (20 mM Tris pH 7.3, 150 mM NaCl), 0.5% BSA

Product Description	
Host	Goat
Gene ID	481
Gene Symbol	ATP1B1
Species	Human, Mouse, Rat
Marker	Plasma Membrane Marker
Specificity/Sensitivity	This antibody is expected to recognize both reported isoforms (NP_001668.1; NP_001001787.1).
Immunogen	Peptide with sequence C-KTEISFRPNDPKSYE corresponding to internal region according to NP_001668.1, NP_001001787.1.

Product Application Details	
Applications	Western Blot, Immunohistochemistry, Immunohistochemistry-Paraffin, Peptide ELISA
Recommended Dilutions	Western Blot 0.1 - 0.3 ug/mL, Immunohistochemistry, Immunohistochemistry-Paraffin 5 ug/mL, Peptide ELISA Detection limit 1:128000
Application Notes	WB: Approx. 48 kDa band observed in rat retina lysates and 50 kDa band in mouse and rat kidney lysates is reported in scientific literature (PMID: 20130120).

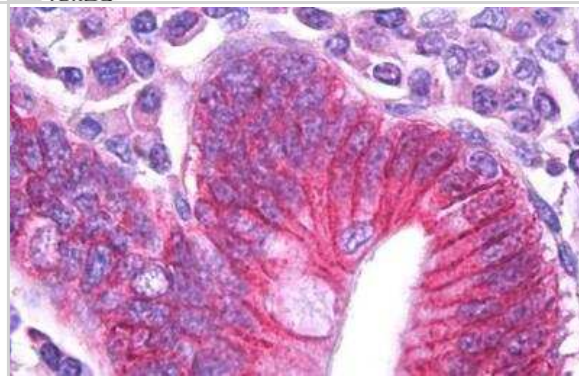


Images

Western Blot: Sodium Potassium ATPase Beta 1 Antibody [NBP1-51987] - Staining of Rat Retina lysate (35 ug protein in RIPA buffer). Antibody at 0.1 ug/mL. Primary incubation was 1 hour. Detected by chemiluminescence.

250kDa
150kDa
100kDa
75kDa
50kDa
37kDa
25kDa
20kDa
15kDa

Immunohistochemistry-Paraffin: Sodium Potassium ATPase Beta 1 Antibody [NBP1-51987] - Staining of Human Small Intestine. Antibody at 5 ug/mL. Steamed antigen retrieval with citrate buffer pH 6, AP-staining.



Publications

Ushkaryov YuA, Monastyrskaya GS, Broude NE et al. Human Na⁺,K⁺-ATPase genes. Beta-subunit gene family contains at least one gene and one pseudogene FEBS Lett 1989-11-01 [PMID: 2555225]

Herman MB, Rajkhowa T, Cutuli F et al. Regulation of renal proximal tubule Na-K-ATPase by prostaglandins. Am J Physiol Renal Physiol 2010-05-01 [PMID: 20130120]



Novus Biologicals USA

10730 E. Briarwood Avenue
Centennial, CO 80112
USA
Phone: 303.730.1950
Toll Free: 1.888.506.6887
Fax: 303.730.1966
nb-customerservice@bio-techne.com

Bio-Techne Canada

21 Canmotor Ave
Toronto, ON M8Z 4E6
Canada
Phone: 905.827.6400
Toll Free: 855.668.8722
Fax: 905.827.6402
canada.inquires@bio-techne.com

Bio-Techne Ltd

19 Barton Lane
Abingdon Science Park
Abingdon, OX14 3NB, United Kingdom
Phone: (44) (0) 1235 529449
Free Phone: 0800 37 34 15
Fax: (44) (0) 1235 533420
info.EMEA@bio-techne.com

General Contact Information

www.novusbio.com
Technical Support: nb-technical@bio-techne.com
Orders: nb-customerservice@bio-techne.com
General: novus@novusbio.com

Products Related to NBP1-51987

HAF017	Rabbit anti-Goat IgG Secondary Antibody [HRP (Horseradish Peroxidase)]
HAF109	Donkey anti-Goat IgG Secondary Antibody [HRP (Horseradish Peroxidase)]
NB410-28088-1mg	Goat IgG Isotype Control
NBP2-59894-50ug	Recombinant Human Sodium Potassium ATPase Beta 1 His Protein

Limitations

This product is for research use only and is not approved for use in humans or in clinical diagnosis. Primary Antibodies are guaranteed for 1 year from date of receipt.

For more information on our 100% guarantee, please visit www.novusbio.com/guarantee

Earn gift cards/discounts by submitting a review: www.novusbio.com/reviews/submit/NBP1-51987

Earn gift cards/discounts by submitting a publication using this product:
www.novusbio.com/publications



