

# Product Datasheet

## Recombinant Human NELF-E His Protein NBP1-51044-0.1mg

Unit Size: 0.1 mg

Store at 4C short term. Aliquot and store at -20C long term. Avoid freeze-thaw cycles.

[www.novusbio.com](http://www.novusbio.com)



[technical@novusbio.com](mailto:technical@novusbio.com)

Protocols, Publications, Related Products, Reviews, Research Tools and Images at:  
[www.novusbio.com/NBP1-51044](http://www.novusbio.com/NBP1-51044)

Updated 10/23/2024 v.20.1

Earn rewards for product  
reviews and publications.

Submit a publication at [www.novusbio.com/publications](http://www.novusbio.com/publications)

Submit a review at [www.novusbio.com/reviews/destination/NBP1-51044](http://www.novusbio.com/reviews/destination/NBP1-51044)



**NBP1-51044-0.1mg**

Recombinant Human NELF-E His Protein

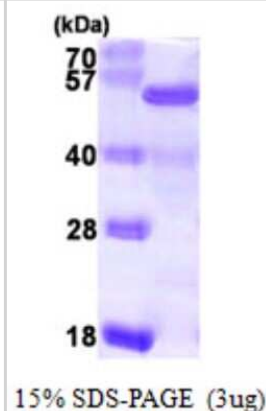
Product Information	
Unit Size	0.1 mg
Concentration	0.25 mg/ml
Storage	Store at 4C short term. Aliquot and store at -20C long term. Avoid freeze-thaw cycles.
Preservative	No Preservative
Purity	>85%, by SDS-PAGE
Buffer	20 mM Tris-HCl buffer (pH 8.0), 50% glycerol, 1 mM DTT, 0.1 mM PMSF
Target Molecular Weight	45.4 kDa

Product Description	
Description	<p>A recombinant protein with a N-Terminal His-tag and corresponding to the amino acids 1-380 of Human NELF-E</p> <p><b>Source:</b> <i>E.coli</i></p> <p><b>Amino Acid Sequence:</b> MGSSHHHHHH SGLVPRGSH MLVIPPGLSE            EEEALQKKFN KLKMKKALL ALKKQSSST TSQGGVKRSL SEQVMDTAT            ATEQAKQLVK SGAISAIKAE TKNSGFKRSR TLEGKLDPE KGPVPTFQPF            QRSISADDDL QESSRRPQRK SLYESFVSSS DRLRELPGDG EEAEGPGAGD            GPPRSFDWGY EERSGAHSSA SPPRSRDRDR SHERNRDRDR            DRERDRDRDR DRDRERDRDR DRDRDRDRER DRDRERDRDR            DREGPFRRSD SFPERRAPRK GNTLYVYGED MTPTLLRGAF SPFGNIIDLS            MDPPRNCAFV TYEKMESADQ AVAELNGTQV ESVQLKVNIA RKQPMLDAAT            GKSVWGLAV QNSPKGCHRD KRTQIVYSDD VYKENLVDGF</p>
Gene ID	7936
Gene Symbol	NELFE
Species	Human

Product Application Details	
Applications	SDS-Page
Recommended Dilutions	SDS-Page

**Images**

SDS-Page: Recombinant Human NELF-E Protein [NBP1-51044] - 15 % SDS-PAGE (3ug)





### Novus Biologicals USA

10730 E. Briarwood Avenue  
Centennial, CO 80112  
USA  
Phone: 303.730.1950  
Toll Free: 1.888.506.6887  
Fax: 303.730.1966  
nb-customerservice@bio-techne.com

### Bio-Techne Canada

21 Canmotor Ave  
Toronto, ON M8Z 4E6  
Canada  
Phone: 905.827.6400  
Toll Free: 855.668.8722  
Fax: 905.827.6402  
canada.inquires@bio-techne.com

### Bio-Techne Ltd

19 Barton Lane  
Abingdon Science Park  
Abingdon, OX14 3NB, United Kingdom  
Phone: (44) (0) 1235 529449  
Free Phone: 0800 37 34 15  
Fax: (44) (0) 1235 533420  
info.EMEA@bio-techne.com

### General Contact Information

www.novusbio.com  
Technical Support: nb-technical@bio-techne.com  
Orders: nb-customerservice@bio-techne.com  
General: novus@novusbio.com

### Products Related to NBP1-51044-0.1mg

---

NBP2-51698-0.02mg	Recombinant Human NELF-E His Protein
210-TA-005	TNF-alpha [Unconjugated]
NBP1-88036	NELF-E Antibody
M6000B-1	IL-6 [HRP]

---

### Limitations

This product is for research use only and is not approved for use in humans or in clinical diagnosis. Peptides and proteins are guaranteed for 3 months from date of receipt.

For more information on our 100% guarantee, please visit [www.novusbio.com/guarantee](http://www.novusbio.com/guarantee)

Earn gift cards/discounts by submitting a review: [www.novusbio.com/reviews/submit/NBP1-51044](http://www.novusbio.com/reviews/submit/NBP1-51044)

Earn gift cards/discounts by submitting a publication using this product:  
[www.novusbio.com/publications](http://www.novusbio.com/publications)

