

# Product Datasheet

## Recombinant Human GSTM2 His Protein NBP1-50850-0.1mg

Unit Size: 0.1 mg

Store at 4C short term. Aliquot and store at -20C long term. Avoid freeze-thaw cycles.

[www.novusbio.com](http://www.novusbio.com)



[technical@novusbio.com](mailto:technical@novusbio.com)

Protocols, Publications, Related Products, Reviews, Research Tools and Images at:  
[www.novusbio.com/NBP1-50850](http://www.novusbio.com/NBP1-50850)

Updated 10/23/2024 v.20.1

Earn rewards for product  
reviews and publications.

Submit a publication at [www.novusbio.com/publications](http://www.novusbio.com/publications)

Submit a review at [www.novusbio.com/reviews/destination/NBP1-50850](http://www.novusbio.com/reviews/destination/NBP1-50850)



**NBP1-50850-0.1mg**

Recombinant Human GSTM2 His Protein

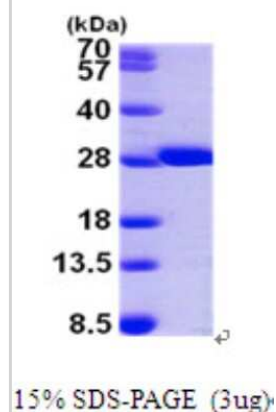
Product Information	
Unit Size	0.1 mg
Concentration	0.5 mg/ml
Storage	Store at 4C short term. Aliquot and store at -20C long term. Avoid freeze-thaw cycles.
Preservative	No Preservative
Purity	>95%, by SDS-PAGE
Buffer	20 mM Tris-HCl buffer (pH8.0), 10% glycerol, 0.1 M NaCl, 1 mM DTT
Target Molecular Weight	27.9 kDa

Product Description	
Description	<p>A bioactive recombinant protein with a N-Terminal His-tag and corresponding to the amino acids 1-218 of Human GSTM2</p> <p><b>Source:</b> <i>E.coli</i></p> <p><b>Amino Acid Sequence:</b> MGSSHHHHHH SGLVPRGSH MPMTLGYWNI RGLAHSIRLL LEYTDSSYEE KKYTMGDAPD YDRSQWLNEK FKLGLDFPNL PYLIDGTHKI TQSNAILRYI ARKHNLGCGES EKEQIREDEL ENQFMDSRMQ LAKLCYDPDF EKLKPEYLQA LPEMLKLYSQ FLGKQPWFLG DKITFVDFIA YDVLERNQVF EPSCLDAPFN LKDFISRFEG LEKISAYMKS SRFLPRPVFT KMAVWGNK</p>
Gene ID	2946
Gene Symbol	GSTM2
Species	Human
Details of Functionality	Specific activity is > 250 units/mg, and is defined as the amount of enzyme that conjugate 1.0 umole of 1-chloro-2,4-dinitrobenzene (CDNB) with reduced glutathione per minute at pH 6.5 at 25C.

Product Application Details	
Applications	SDS-Page, Enzyme Activity
Recommended Dilutions	SDS-Page, Enzyme Activity

**Images**

SDS-Page: Recombinant Human GSTM2 Protein [NBP1-50850] - 15 % SDS-PAGE (3ug)





### Novus Biologicals USA

10730 E. Briarwood Avenue  
Centennial, CO 80112  
USA  
Phone: 303.730.1950  
Toll Free: 1.888.506.6887  
Fax: 303.730.1966  
nb-customerservice@bio-techne.com

### Bio-Techne Canada

21 Canmotor Ave  
Toronto, ON M8Z 4E6  
Canada  
Phone: 905.827.6400  
Toll Free: 855.668.8722  
Fax: 905.827.6402  
canada.inquires@bio-techne.com

### Bio-Techne Ltd

19 Barton Lane  
Abingdon Science Park  
Abingdon, OX14 3NB, United Kingdom  
Phone: (44) (0) 1235 529449  
Free Phone: 0800 37 34 15  
Fax: (44) (0) 1235 533420  
info.EMEA@bio-techne.com

### General Contact Information

www.novusbio.com  
Technical Support: nb-technical@bio-techne.com  
Orders: nb-customerservice@bio-techne.com  
General: novus@novusbio.com

### Products Related to NBP1-50850-0.1mg

---

NB600-326	GST Epitope Tag Antibody - BSA Free
H00002946-M03	GSTM2 Antibody (1E10)
NBP2-44520-0.1mg	PMEL17/SILV Antibody (HMB45)
NBP2-16756	Glutathione S-Transferase pi 1/GSTP1 Antibody

---

### Limitations

This product is for research use only and is not approved for use in humans or in clinical diagnosis. Peptides and proteins are guaranteed for 3 months from date of receipt.

For more information on our 100% guarantee, please visit [www.novusbio.com/guarantee](http://www.novusbio.com/guarantee)

Earn gift cards/discounts by submitting a review: [www.novusbio.com/reviews/submit/NBP1-50850](http://www.novusbio.com/reviews/submit/NBP1-50850)

Earn gift cards/discounts by submitting a publication using this product:  
[www.novusbio.com/publications](http://www.novusbio.com/publications)

