

# Product Datasheet

## KCTD15 Antibody (AT4C3) - BSA Free NBP1-49429

Unit Size: 0.1 ml

Store at 4C short term. Aliquot and store at -20C long term. Avoid freeze-thaw cycles.

[www.novusbio.com](http://www.novusbio.com)



[technical@novusbio.com](mailto:technical@novusbio.com)

Protocols, Publications, Related Products, Reviews, Research Tools and Images at:  
[www.novusbio.com/NBP1-49429](http://www.novusbio.com/NBP1-49429)

Updated 10/23/2024 v.20.1

Earn rewards for product  
reviews and publications.

Submit a publication at [www.novusbio.com/publications](http://www.novusbio.com/publications)

Submit a review at [www.novusbio.com/reviews/destination/NBP1-49429](http://www.novusbio.com/reviews/destination/NBP1-49429)



**NBP1-49429**

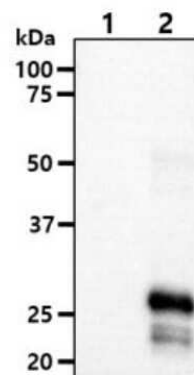
KCTD15 Antibody (AT4C3) - BSA Free

Product Information	
Unit Size	0.1 ml
Concentration	1 mg/ml
Storage	Store at 4C short term. Aliquot and store at -20C long term. Avoid freeze-thaw cycles.
Clonality	Monoclonal
Clone	AT4C3
Preservative	0.02% Sodium Azide
Isotype	IgG3 Kappa
Purity	Protein G purified
Buffer	PBS (pH 7.4), 10% Glycerol
Product Description	
Host	Mouse
Gene ID	79047
Gene Symbol	KCTD15
Species	Human
Immunogen	Recombinant human KCTD15 (1-234aa) purified from E. coli.
Product Application Details	
Applications	Western Blot, ELISA, Immunocytochemistry/ Immunofluorescence
Recommended Dilutions	Western Blot 1:250-1:500, ELISA 1:100-1:2000, Immunocytochemistry/ Immunofluorescence 1:250

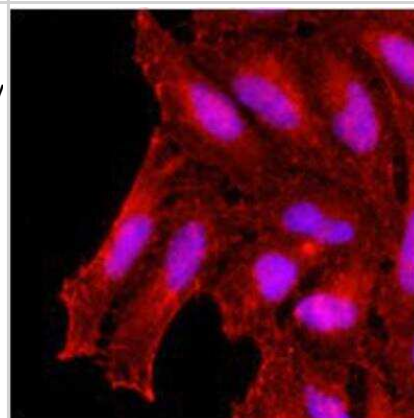


## Images

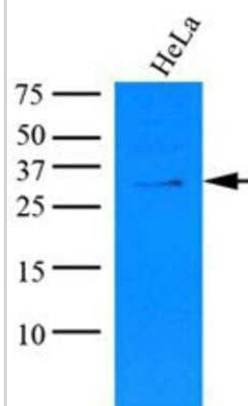
Western Blot: KCTD15 Antibody (AT4C3) [NBP1-49429] - The cell lysates (10ug) were resolved by SDS-PAGE, transferred to PVDF membrane and probed with anti-human KCTD15 antibody (1:1000). Proteins were visualized using a goat anti-mouse secondary antibody conjugated to HRP and an ECL detection system. Lane 1 : 293T cell lysate Lane 2 : KCTD15 Transfected 293T cell lysate



Immunocytochemistry/Immunofluorescence: KCTD15 Antibody (AT4C3) [NBP1-49429] - Human HeLa cells stained with monoclonal anti-human KCTD15 antibody (1:500) with Texas Red (Red). Nucleus was stained by Hoechst 33342 (Blue).



Western Blot: KCTD15 Antibody (AT4C3) [NBP1-49429] - PAGE, transferred to NC membrane and probed with anti-human KCTD15 (1:1000). Proteins were visualized using a goat anti-mouse secondary antibody conjugated to HRP and an ECL detection system.





### **Novus Biologicals USA**

10730 E. Briarwood Avenue  
Centennial, CO 80112  
USA  
Phone: 303.730.1950  
Toll Free: 1.888.506.6887  
Fax: 303.730.1966  
nb-customerservice@bio-techne.com

### **Bio-Techne Canada**

21 Canmotor Ave  
Toronto, ON M8Z 4E6  
Canada  
Phone: 905.827.6400  
Toll Free: 855.668.8722  
Fax: 905.827.6402  
canada.inquires@bio-techne.com

### **Bio-Techne Ltd**

19 Barton Lane  
Abingdon Science Park  
Abingdon, OX14 3NB, United Kingdom  
Phone: (44) (0) 1235 529449  
Free Phone: 0800 37 34 15  
Fax: (44) (0) 1235 533420  
info.EMEA@bio-techne.com

### **General Contact Information**

www.novusbio.com  
Technical Support: nb-technical@bio-techne.com  
Orders: nb-customerservice@bio-techne.com  
General: novus@novusbio.com

### **Products Related to NBP1-49429**

---

HAF007	Goat anti-Mouse IgG Secondary Antibody [HRP]
NB720-B	Rabbit anti-Mouse IgG (H+L) Secondary Antibody [Biotin]
NBP1-96978	Mouse IgG3 Kappa Light Chain Isotype Control (MG3K)
NBP1-49429UV	KCTD15 Antibody (AT4C3) [DyLight 350]

---

### **Limitations**

This product is for research use only and is not approved for use in humans or in clinical diagnosis. Primary Antibodies are guaranteed for 1 year from date of receipt.

For more information on our 100% guarantee, please visit [www.novusbio.com/guarantee](http://www.novusbio.com/guarantee)

Earn gift cards/discounts by submitting a review: [www.novusbio.com/reviews/submit/NBP1-49429](http://www.novusbio.com/reviews/submit/NBP1-49429)

Earn gift cards/discounts by submitting a publication using this product:  
[www.novusbio.com/publications](http://www.novusbio.com/publications)

