

Product Datasheet

CLEC4E Antibody (16E3) - BSA Free NBP1-49311

Unit Size: 0.1 ml

Store at 4C short term. Aliquot and store at -20C long term. Avoid freeze-thaw cycles.

www.novusbio.com



technical@novusbio.com

Publications: 3

Protocols, Publications, Related Products, Reviews, Research Tools and Images at:
www.novusbio.com/NBP1-49311

Updated 9/9/2025 v.20.1

Earn rewards for product
reviews and publications.

Submit a publication at www.novusbio.com/publications

Submit a review at www.novusbio.com/reviews/destination/NBP1-49311



NBP1-49311

CLEC4E Antibody (16E3) - BSA Free

Product Information

Unit Size	0.1 ml
Concentration	1 mg/ml
Storage	Store at 4C short term. Aliquot and store at -20C long term. Avoid freeze-thaw cycles.
Clonality	Monoclonal
Clone	16E3
Preservative	0.02% Sodium Azide
Isotype	IgG2b Kappa
Purity	Protein G purified
Buffer	PBS (pH 7.4), 10% Glycerol
Target Molecular Weight	25 kDa

Product Description

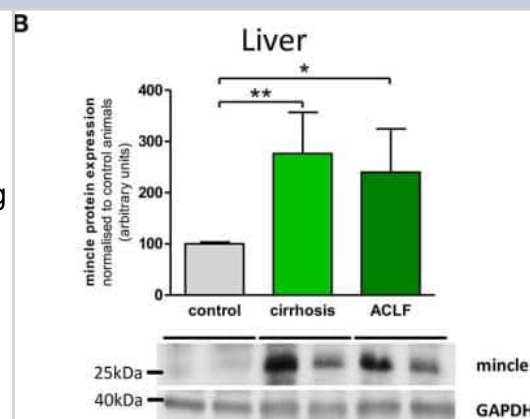
Description	Novus Biologicals Mouse CLEC4E Antibody (16E3) - BSA Free (NBP1-49311) is a monoclonal antibody validated for use in IHC, WB, ELISA, Flow and ICC/IF. Anti-CLEC4E Antibody: Cited in 3 publications. All Novus Biologicals antibodies are covered by our 100% guarantee.
Host	Mouse
Gene ID	26253
Gene Symbol	CLEC4E
Species	Human, Rat
Reactivity Notes	Rat reactivity reported in scientific literature (PMID: 31725411).
Immunogen	Recombinant human CLEC4E (41-219aa) purified from E. coli (NP_055173).

Product Application Details

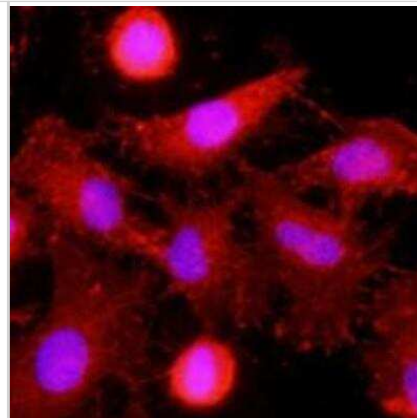
Applications	Western Blot, Immunohistochemistry-Paraffin, ELISA, Flow Cytometry, Immunocytochemistry/ Immunofluorescence, Immunohistochemistry
Recommended Dilutions	Western Blot 1:250-1:500, Flow Cytometry 1:10-1:1000, ELISA 1:100-1:2000, Immunohistochemistry 1:10-1:500, Immunocytochemistry/ Immunofluorescence 1:250-1:500, Immunohistochemistry-Paraffin 1:50

Images

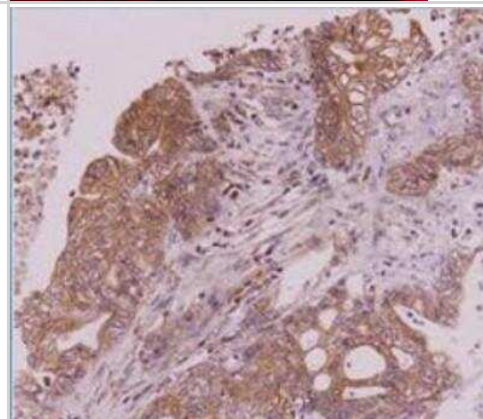
Western Blot: CLEC4E Antibody (16E3) [NBP1-49311] - Hepatic mincle (CLEC4E) in cirrhosis and ACLF. Representative Western blot showing protein levels of mincle in control, cirrhotic induced by bile-duct ligation (BDL), and rats with acute-on-chronic liver failure (ACLF) induced by lipopolysaccharide (LPS) within cirrhosis and quantification of the Western blots. Image collected and cropped by CiteAb from the following publication (www.frontiersin.org/article/10.3389/fimmu.2020.01352/full) licensed under a CC-BY license.



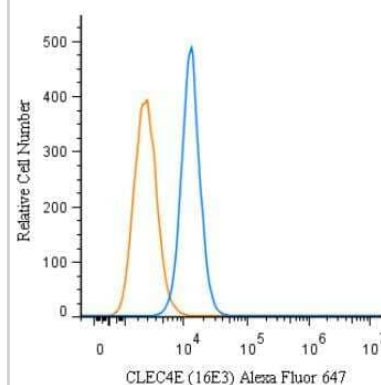
Immunocytochemistry/Immunofluorescence: CLEC4E Antibody (16E3) [NBP1-49311] - HeLa cells stained with monoclonal anti-human MINCLE antibody (1:500) with Texas Red (Red). Nucleus was stained by Hoechst 33342 (Blue).



Immunohistochemistry-Paraffin: CLEC4E Antibody (16E3) [NBP1-49311] - Paraffin embedded sections of colorectal cancer tissue were incubated with anti-human MINCLE antibody (1:50) for 2 hours at room temperature. Antigen retrieval was performed in 0.1M sodium citrate buffer and detected using Diaminobenzidine (DAB).

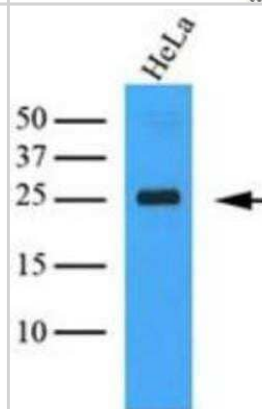


Flow Cytometry: CLEC4E Antibody (16E3) [NBP1-49311] - An intracellular stain was performed on U87MG cells with CLEC4E Antibody (16E3) NBP1-49311AF647 (blue) and a matched isotype control (orange). Cells were fixed with 4% PFA and then permeabilized with 0.1% saponin. Cells were incubated in an antibody dilution of 2.5 ug/mL for 30 minutes at room temperature. Both antibodies were conjugated to Alexa Fluor 647

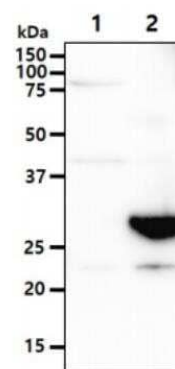


Copyright © 2018 Novus Biologicals

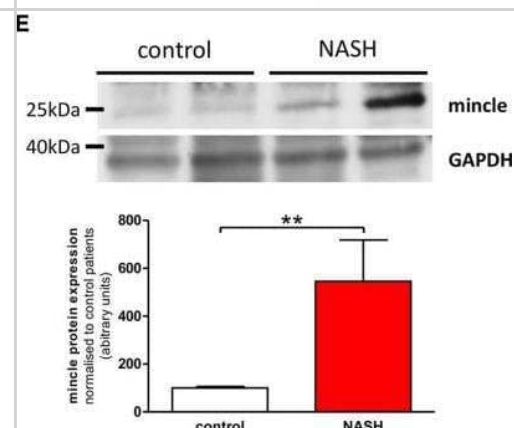
Western Blot: CLEC4E Antibody (16E3) [NBP1-49311] - Cell lysates of HeLa (35ug) were resolved by SDS-PAGE, transferred to NC membrane and probed with anti-human CLEC4E (1:1000). Proteins were visualized using a goat anti-mouse secondary antibody conjugated to HRP and an ECL detection system.



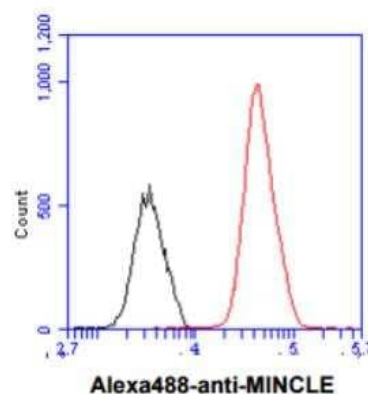
Western Blot: CLEC4E Antibody (16E3) [NBP1-49311] - The Cell lysates (40ug) were resolved by SDS-PAGE, transferred to PVDF membrane and probed with anti-human MINCLE antibody (1:1000). Proteins were visualized using a goat anti-mouse secondary antibody conjugated to HRP and an ECL detection system. Lane 1. : 293T cell lysate Lane 2. : CLEC4E transfected 293T cell lysate



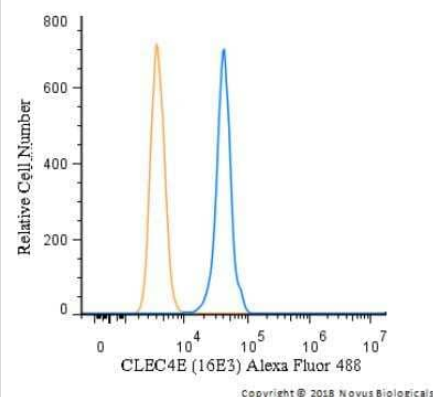
Western Blot: CLEC4E Antibody (16E3) [NBP1-49311] - Mincle (CLEC4E) in NASH. Representative western blot showing protein levels of mincle in NASH patients and non-NASH controls and quantification of the Western blots. Image collected and cropped by CiteAb from the following publication (www.frontiersin.org/article/10.3389/fimmu.2020.01352/full) licensed under a CC-BY license.



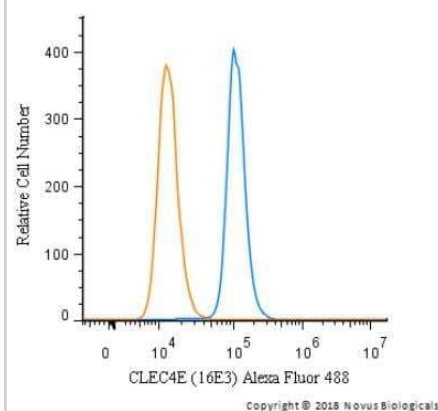
Flow Cytometry: CLEC4E Antibody (16E3) [NBP1-49311] - Flow cytometry analysis of CLEC4E in LNCap cell line, staining at 2-5ug for 1x10⁶ cells (red line). The secondary antibody used goat anti-mouse IgG Alexa fluor 488 conjugate. Isotype control antibody was mouse IgG (black line).



Flow Cytometry: CLEC4E Antibody (16E3) [NBP1-49311] - An intracellular stain was performed on U-937 cells with CLEC4E Antibody (16E3) NBP1-49311AF488 (blue) and a matched isotype control (orange). Cells were fixed with 4% PFA and then permeabilized with 0.1% saponin. Cells were incubated in an antibody dilution of 5 ug/mL for 30 minutes at room temperature. Both antibodies were conjugated to Alexa Fluor 488.



Flow Cytometry: CLEC4E Antibody (16E3) [NBP1-49311] - An intracellular stain was performed on U87MG cells with CLEC4E Antibody (16E3) NBP1-49311AF488 (blue) and a matched isotype control (orange). Cells were fixed with 4% PFA and then permeabilized with 0.1% saponin. Cells were incubated in an antibody dilution of 5 ug/mL for 30 minutes at room temperature. Both antibodies were conjugated to Alexa Fluor 488.



Publications

Schierwagen R, Uschner FE, Ortiz C et al. The Role of Macrophage-Inducible C-Type Lectin in Different Stages of Chronic Liver Disease Front Immunol 2020-07-07 [PMID: 32733451]

N'diaye M, Brauner S, Flytzani S et al. C-type lectin receptors Mcl and Mincle control development of multiple sclerosis-like neuroinflammation J Clin Invest. 2020-02-03 [PMID: 31725411] (IF/IHC, Rat)

Details:

Citation used the Alexa Fluor 488 format of this antibody.

de Rivero Vaccari JC, Brandt F, Berti AF et al. Mincle Signaling in the Innate Immune Response after Traumatic Brain Injury J. Neurotrauma 2014-08-11 [PMID: 25111533]



Novus Biologicals USA

10730 E. Briarwood Avenue
Centennial, CO 80112
USA
Phone: 303.730.1950
Toll Free: 1.888.506.6887
Fax: 303.730.1966
nb-customerservice@bio-techne.com

Bio-Techne Canada

21 Canmotor Ave
Toronto, ON M8Z 4E6
Canada
Phone: 905.827.6400
Toll Free: 855.668.8722
Fax: 905.827.6402
canada.inquires@bio-techne.com

Bio-Techne Ltd

19 Barton Lane
Abingdon Science Park
Abingdon, OX14 3NB, United Kingdom
Phone: (44) (0) 1235 529449
Free Phone: 0800 37 34 15
Fax: (44) (0) 1235 533420
info.EMEA@bio-techne.com

General Contact Information

www.novusbio.com
Technical Support: nb-technical@bio-techne.com
Orders: nb-customerservice@bio-techne.com
General: novus@novusbio.com

Products Related to NBP1-49311

HAF007	Goat anti-Mouse IgG Secondary Antibody [HRP]
NB720-B	Rabbit anti-Mouse IgG (H+L) Secondary Antibody [Biotin]
NBP1-43317-0.5mg	Mouse IgG2b Kappa Light Chain Isotype Control (MG2b)
NBP1-49311AF488	CLEC4E Antibody (16E3) [Alexa Fluor® 488]

Limitations

This product is for research use only and is not approved for use in humans or in clinical diagnosis. Primary Antibodies are guaranteed for 1 year from date of receipt.

For more information on our 100% guarantee, please visit www.novusbio.com/guarantee

Earn gift cards/discounts by submitting a review: www.novusbio.com/reviews/submit/NBP1-49311

Earn gift cards/discounts by submitting a publication using this product:
www.novusbio.com/publications

