

Product Datasheet

Cytokeratin, pan Antibody (C-11) [Allophycocyanin] NBP1-48348APC

Unit Size: 0.1 ml

Store at 4C in the dark.

www.novusbio.com



technical@novusbio.com

Protocols, Publications, Related Products, Reviews, Research Tools and Images at:
www.novusbio.com/NBP1-48348APC

Updated 10/23/2024 v.20.1

Earn rewards for product
reviews and publications.

Submit a publication at www.novusbio.com/publications

Submit a review at www.novusbio.com/reviews/destination/NBP1-48348APC



NBP1-48348APC

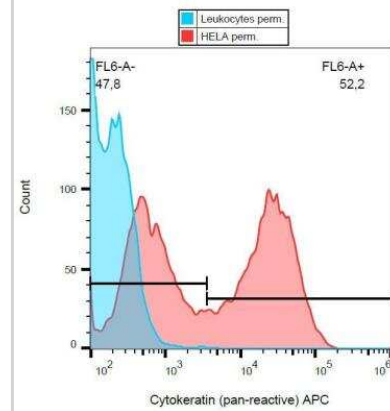
Cytokeratin, pan Antibody (C-11) [Allophycocyanin]

Product Information	
Unit Size	0.1 ml
Concentration	Please see the vial label for concentration. If unlisted please contact technical services.
Storage	Store at 4C in the dark.
Clonality	Monoclonal
Clone	C-11
Preservative	0.05% Sodium Azide
Isotype	IgG1
Conjugate	Allophycocyanin
Purity	Protein A purified
Buffer	PBS
Product Description	
Host	Mouse
Gene ID	3848
Gene Symbol	KRT1
Species	Human, Mouse, Guinea Pig, Mammal
Reactivity Notes	Mouse reactivity reported in (PMID:26574781). Please note that this antibody is reactive to Mouse and derived from the same host, Mouse. Mouse-On-Mouse blocking reagent may be needed for IHC and ICC experiments to reduce high background signal. You can find these reagents under catalog numbers PK-2200-NB and MP-2400-NB. Please contact Technical Support if you have any questions.
Specificity/Sensitivity	This Mouse monoclonal Cytokeratin (Pan-reactive) antibody reacts with Cytokeratin peptides 4, 5, 6, 8, 10, 13, 18. Cytokeratins are a member of intermediate filaments subfamily represented in epithelial tissues.
Immunogen	This Cytokeratin, pan Antibody (C-11) was developed against a keratin-enriched preparation from human epidermoid carcinoma cell line A431.
Product Application Details	
Applications	Western Blot, Flow Cytometry, Flow (Intracellular), Immunocytochemistry/Immunofluorescence, Immunohistochemistry, Immunohistochemistry-Paraffin, Immunoprecipitation, CyTOF-ready
Recommended Dilutions	Western Blot, Flow Cytometry, Immunohistochemistry, Immunocytochemistry/Immunofluorescence, Immunoprecipitation, Immunohistochemistry-Paraffin, Flow (Intracellular), CyTOF-ready



Images

Flow Cytometry: Cytokeratin, pan Antibody (C-11) [Allophycocyanin] [NBP1-48348APC] - Intracellular flow cytometry analysis of cytokeratin expression in HeLa cells using the APC conjugate.





Novus Biologicals USA

10730 E. Briarwood Avenue
Centennial, CO 80112
USA
Phone: 303.730.1950
Toll Free: 1.888.506.6887
Fax: 303.730.1966
nb-customerservice@bio-techne.com

Bio-Techne Canada

21 Canmotor Ave
Toronto, ON M8Z 4E6
Canada
Phone: 905.827.6400
Toll Free: 855.668.8722
Fax: 905.827.6402
canada.inquires@bio-techne.com

Bio-Techne Ltd

19 Barton Lane
Abingdon Science Park
Abingdon, OX14 3NB, United Kingdom
Phone: (44) (0) 1235 529449
Free Phone: 0800 37 34 15
Fax: (44) (0) 1235 533420
info.EMEA@bio-techne.com

General Contact Information

www.novusbio.com
Technical Support: nb-technical@bio-techne.com
Orders: nb-customerservice@bio-techne.com
General: novus@novusbio.com

Products Related to NBP1-48348APC

NBP1-97005APC	Mouse IgG1 Isotype Control (MG1) [Allophycocyanin]
NBP1-48348PE	Cytokeratin, pan Antibody (C-11) [PE]
DNST0	Endostatin [HRP]
MAB1455	Albumin Antibody (188835) [Unconjugated] - Serum

Limitations

This product is for research use only and is not approved for use in humans or in clinical diagnosis. Primary Antibodies are guaranteed for 1 year from date of receipt.

For more information on our 100% guarantee, please visit www.novusbio.com/guarantee

Earn gift cards/discounts by submitting a review: www.novusbio.com/reviews/submit/NBP1-48348APC

Earn gift cards/discounts by submitting a publication using this product:
www.novusbio.com/publications

