

# Product Datasheet

## Cytokeratin 8 Antibody (OTI1B12) NBP1-48281

Unit Size: 0.1 ml

Store at -20C. Avoid freeze-thaw cycles.

[www.novusbio.com](http://www.novusbio.com)



[technical@novusbio.com](mailto:technical@novusbio.com)

**Reviews: 1 Publications: 1**

Protocols, Publications, Related Products, Reviews, Research Tools and Images at:  
[www.novusbio.com/NBP1-48281](http://www.novusbio.com/NBP1-48281)

Updated 10/23/2024 v.20.1

**Earn rewards for product  
reviews and publications.**

Submit a publication at [www.novusbio.com/publications](http://www.novusbio.com/publications)

Submit a review at [www.novusbio.com/reviews/destination/NBP1-48281](http://www.novusbio.com/reviews/destination/NBP1-48281)



**NBP1-48281****Cytokeratin 8 Antibody (OTI1B12)**

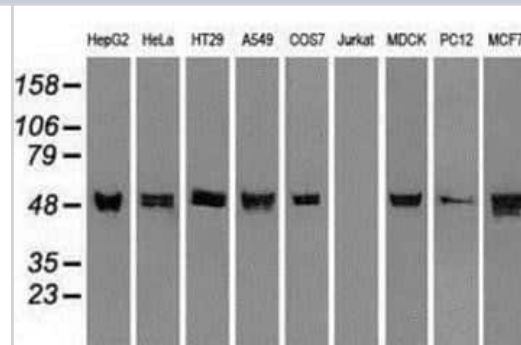
Product Information	
Unit Size	0.1 ml
Concentration	1 mg/ml
Storage	Store at -20C. Avoid freeze-thaw cycles.
Clonality	Monoclonal
Clone	OTI1B12
Preservative	0.02% Sodium Azide
Isotype	IgG2b
Purity	Immunogen affinity purified
Buffer	PBS (pH 7.3), 1.0% BSA and 50% Glycerol
Target Molecular Weight	53.5 kDa

Product Description	
Host	Mouse
Gene ID	3856
Gene Symbol	KRT8
Species	Human, Mouse, Rat, Canine, Monkey
Reactivity Notes	Please note that this antibody is reactive to Mouse and derived from the same host, Mouse. Mouse-On-Mouse blocking reagent may be needed for IHC and ICC experiments to reduce high background signal. You can find these reagents under catalog numbers PK-2200-NB and MP-2400-NB. Please contact Technical Support if you have any questions.
Marker	Epithelial Cell Marker
Specificity/Sensitivity	This antibody is specific for Homo sapiens keratin 8 (KRT8).
Immunogen	Human recombinant protein fragment corresponding to amino acids 91-381 of human CK8 (NP_002264) produced in E.coli.

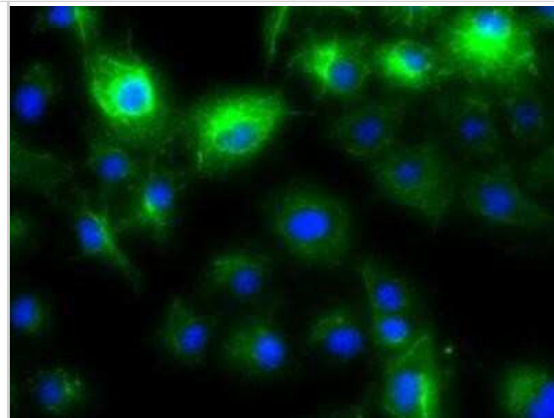
Product Application Details	
Applications	Western Blot, Immunocytochemistry/ Immunofluorescence, Immunohistochemistry, Immunohistochemistry-Paraffin
Recommended Dilutions	Western Blot 1:2500-5000, Immunohistochemistry 1:50, Immunocytochemistry/ Immunofluorescence 1:50-1:100, Immunohistochemistry-Paraffin 1:50

**Images**

Western Blot: Cytokeratin 8 Antibody (OTI1B12) [NBP1-48281] - Analysis of extracts (35ug) from 9 different cell lines by using anti-Cytokeratin 8 monoclonal antibody.



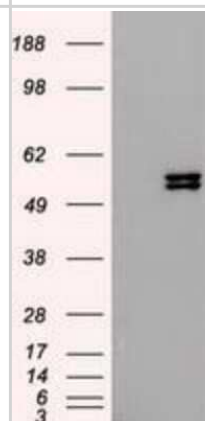
Immunocytochemistry/Immunofluorescence: Cytokeratin 8 Antibody (OTI1B12) [NBP1-48281] - Staining of COS7 cells transiently transfected by pCMV6-ENTRY Cytokeratin 8.



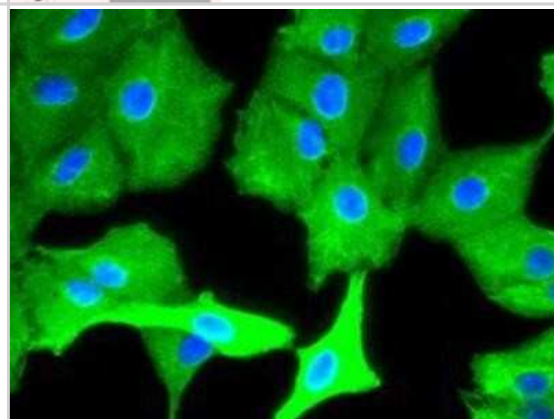
Immunohistochemistry-Paraffin: Cytokeratin 8 Antibody (OTI1B12) [NBP1-48281] - Cytokeratin 8 antibody staining of mouse colon epithelium. IHC-P image submitted by a verified customer review.



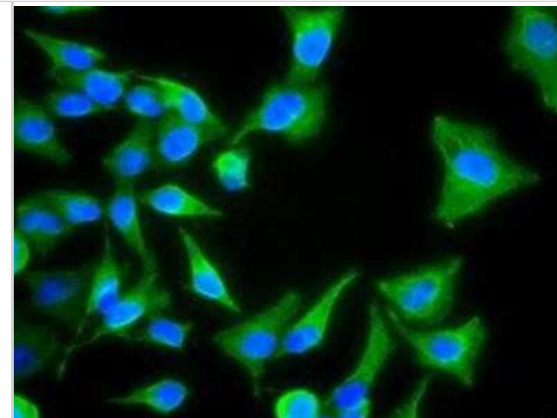
Western Blot: Cytokeratin 8 Antibody (OTI1B12) [NBP1-48281] - HEK293T cells were transfected with the pCMV6-ENTRY control (Left lane) or pCMV6-ENTRY Cytokeratin 8 (Right lane) cDNA for 48 hrs and lysed. Equivalent amounts of cell lysates (5 ug per lane) were separated by SDS-PAGE and immunoblotted with anti-Cytokeratin 8.



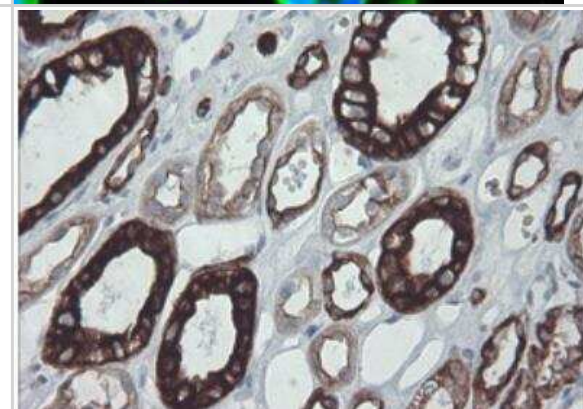
Immunocytochemistry/Immunofluorescence: Cytokeratin 8 Antibody (OTI1B12) [NBP1-48281] - Immunofluorescent staining of A549 cells using anti-Cytokeratin 8 mouse monoclonal antibody.



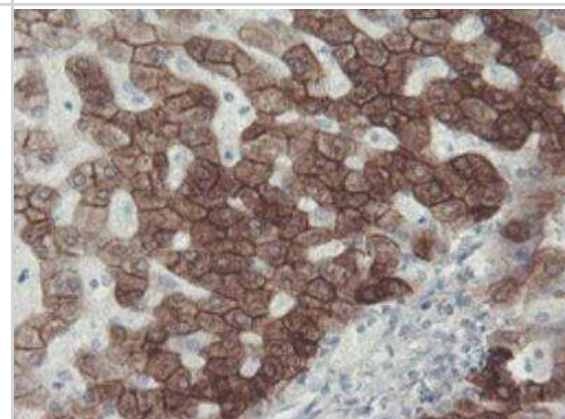
Immunocytochemistry/Immunofluorescence: Cytokeratin 8 Antibody (OTI1B12) [NBP1-48281] - Immunofluorescent staining of HeLa cells using anti-Cytokeratin 8 mouse monoclonal antibody.



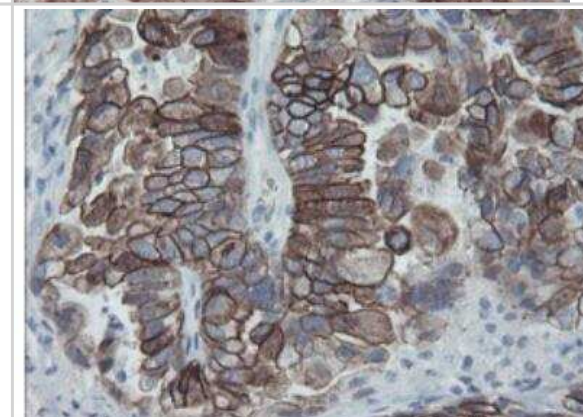
Immunohistochemistry-Paraffin: Cytokeratin 8 Antibody (OTI1B12) [NBP1-48281] - Staining of paraffin-embedded Human Kidney tissue within the normal limits using anti-KRT8 mouse monoclonal antibody at 1:150 dilution.



Immunohistochemistry-Paraffin: Cytokeratin 8 Antibody (OTI1B12) [NBP1-48281] - Staining of paraffin-embedded Human liver tissue within the normal limits using anti-KRT8 mouse monoclonal antibody at 1:150 dilution.

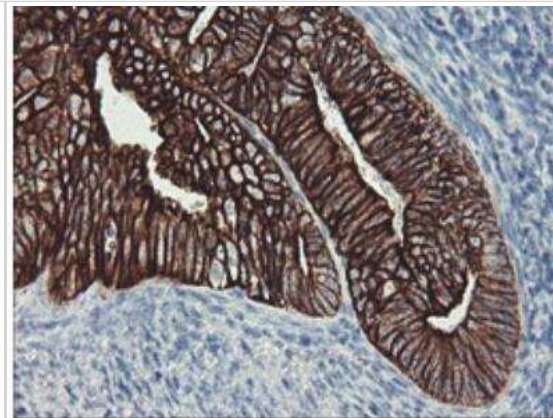


Immunohistochemistry-Paraffin: Cytokeratin 8 Antibody (OTI1B12) [NBP1-48281] - Staining of paraffin-embedded Adenocarcinoma of Human ovary tissue using anti-KRT8 mouse monoclonal antibody at 1:150 dilution.

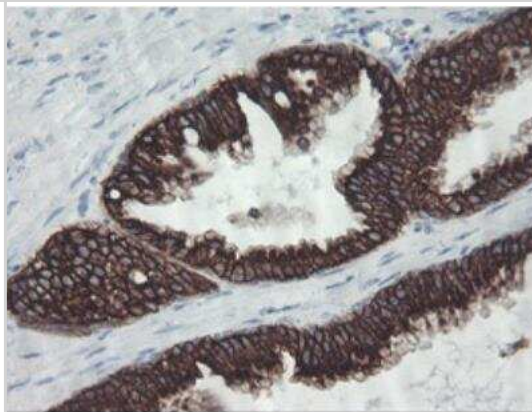




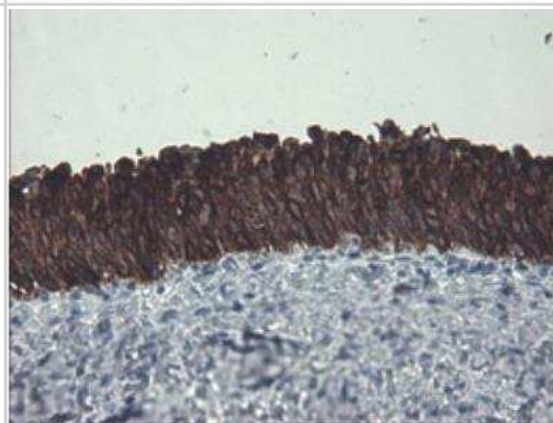
Immunohistochemistry-Paraffin: Cytokeratin 8 Antibody (OTI1B12) [NBP1-48281] - Staining of paraffin-embedded Adenocarcinoma of Human endometrium tissue using anti-KRT8 mouse monoclonal antibody at 1:150 dilution.



Immunohistochemistry-Paraffin: Cytokeratin 8 Antibody (OTI1B12) [NBP1-48281] - Staining of paraffin-embedded Human prostate tissue within the normal limits using anti-KRT8 mouse monoclonal antibody at 1:150 dilution



Immunohistochemistry-Paraffin: Cytokeratin 8 Antibody (OTI1B12) [NBP1-48281] - Staining of paraffin-embedded Human bladder tissue within the normal limits using anti-KRT8 mouse monoclonal antibody at 1:150 dilution.



## Publications

Hong Y, Shan S, Gu Y et al. Malfunction of airway basal stem cells plays a crucial role in pathophysiology of tracheobronchopathia osteoplastica Nature communications 2022-03-14 [PMID: 35288560] (ICC/IF)



### **Novus Biologicals USA**

10730 E. Briarwood Avenue  
Centennial, CO 80112  
USA  
Phone: 303.730.1950  
Toll Free: 1.888.506.6887  
Fax: 303.730.1966  
nb-customerservice@bio-techne.com

### **Bio-Techne Canada**

21 Canmotor Ave  
Toronto, ON M8Z 4E6  
Canada  
Phone: 905.827.6400  
Toll Free: 855.668.8722  
Fax: 905.827.6402  
canada.inquires@bio-techne.com

### **Bio-Techne Ltd**

19 Barton Lane  
Abingdon Science Park  
Abingdon, OX14 3NB, United Kingdom  
Phone: (44) (0) 1235 529449  
Free Phone: 0800 37 34 15  
Fax: (44) (0) 1235 533420  
info.EMEA@bio-techne.com

### **General Contact Information**

[www.novusbio.com](http://www.novusbio.com)  
Technical Support: nb-technical@bio-techne.com  
Orders: nb-customerservice@bio-techne.com  
General: novus@novusbio.com

### **Products Related to NBP1-48281**

---

HAF007	Goat anti-Mouse IgG Secondary Antibody [HRP]
NB720-B	Rabbit anti-Mouse IgG (H+L) Secondary Antibody [Biotin]
NBP2-27231	Mouse IgG2b Isotype Control (MPC-11)
NBP2-23166	Recombinant Human Cytokeratin 8 His Protein

---

### **Limitations**

This product is for research use only and is not approved for use in humans or in clinical diagnosis. Primary Antibodies are guaranteed for 1 year from date of receipt.

For more information on our 100% guarantee, please visit [www.novusbio.com/guarantee](http://www.novusbio.com/guarantee)

Earn gift cards/discounts by submitting a review: [www.novusbio.com/reviews/submit/NBP1-48281](http://www.novusbio.com/reviews/submit/NBP1-48281)

Earn gift cards/discounts by submitting a publication using this product:  
[www.novusbio.com/publications](http://www.novusbio.com/publications)

