

Product Datasheet

STAT3 Antibody (OTI21E7)

NBP1-48014

Unit Size: 0.1 ml

Store at -20C. Avoid freeze-thaw cycles.

www.novusbio.com



technical@novusbio.com

Protocols, Publications, Related Products, Reviews, Research Tools and Images at:
www.novusbio.com/NBP1-48014

Updated 9/20/2021 v.20.1

Earn rewards for product
reviews and publications.

Submit a publication at www.novusbio.com/publications

Submit a review at www.novusbio.com/reviews/destination/NBP1-48014



NBP1-48014

STAT3 Antibody (OTI21E7)

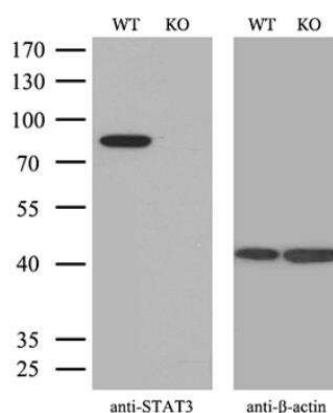
Product Information	
Unit Size	0.1 ml
Concentration	0.35 mg/ml
Storage	Store at -20C. Avoid freeze-thaw cycles.
Clonality	Monoclonal
Clone	OTI21E7
Preservative	0.02% Sodium Azide
Isotype	IgG1
Purity	Immunogen affinity purified
Buffer	PBS (pH 7.3), 1.0% BSA and 50% Glycerol
Target Molecular Weight	88.08 kDa

Product Description	
Host	Mouse
Gene ID	6774
Gene Symbol	STAT3
Species	Human, Mouse, Rat
Reactivity Notes	Please note that this antibody is reactive to Mouse and derived from the same host, Mouse. Mouse-On-Mouse blocking reagent may be needed for IHC and ICC experiments to reduce high background signal. You can find these reagents under catalog numbers PK-2200-NB and MP-2400-NB. Please contact Technical Support if you have any questions.
Specificity/Sensitivity	This antibody is specific for Homo sapiens signal transducer and activator of transcription 3 (acute-phase response factor) (STAT3), transcript variant 3.
Immunogen	Recombinant protein expressed in E.coli corresponding to amino acids 154-175 of human stat3

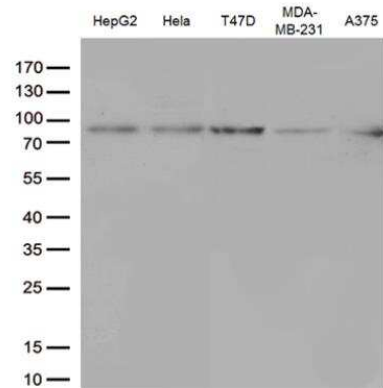
Product Application Details	
Applications	Western Blot, Immunohistochemistry, Immunohistochemistry-Paraffin, Knockout Validated
Recommended Dilutions	Western Blot 1:500, Immunohistochemistry 1:50, Immunohistochemistry-Paraffin 1:50, Knockout Validated

Images

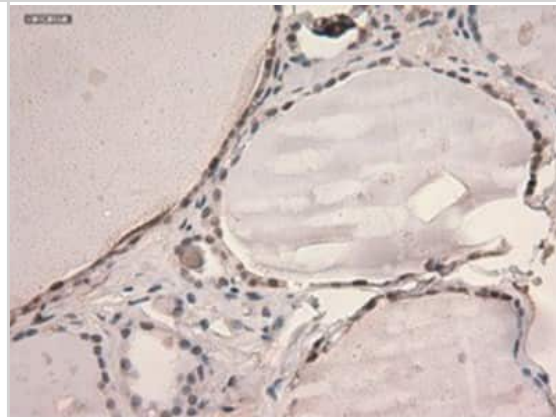
Knockout Validated: STAT3 Antibody (OTI21E7) [NBP1-48014] - Equivalent amounts of cell lysates (10 ug per lane) of wild-type Hela cells and STAT3-Knockout Hela cells were separated by SDS-PAGE and immunoblotted with anti-STAT3 monoclonal antibody. Then the blotted membrane was stripped and re probed with anti-b-actin antibody as a loading control.(1:500)



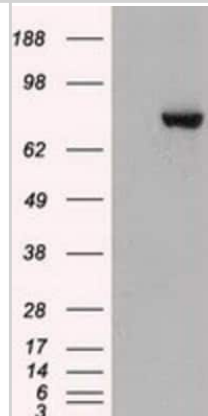
Western Blot: STAT3 Antibody (OTI21E7) [NBP1-48014] - Analysis of extracts (35ug) from different cell line by using anti-STAT3 monoclonal antibody. (1:500)



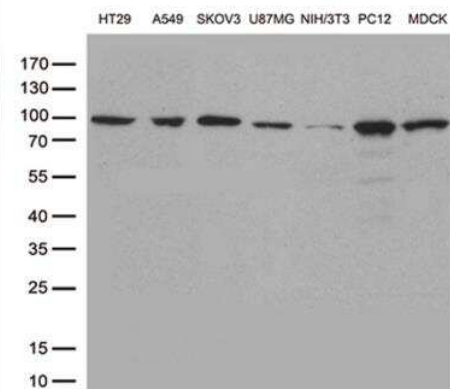
Immunohistochemistry-Paraffin: STAT3 Antibody (21E7) [NBP1-48014] Staining of paraffin-embedded thyroid using anti-STAT3 mouse monoclonal antibody.



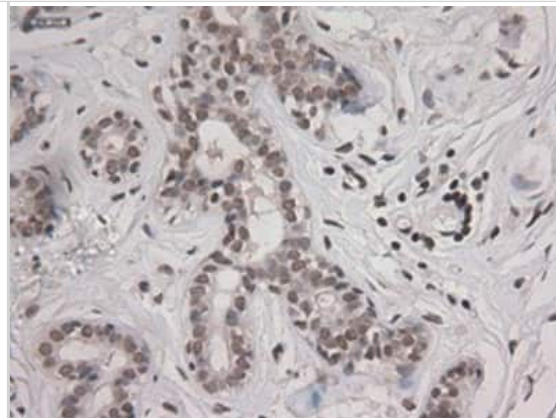
Western Blot: STAT3 Antibody (21E7) [NBP1-48014] - HEK293T cells were transfected with the pCMV6-ENTRY control (Left lane) or pCMV6-ENTRY STAT3(Right lane) cDNA for 48 hrs and lysed. Equivalent amounts of cell lysates (5 ug per lane) were separated by SDS-PAGE and immunoblotted with anti-STAT3.



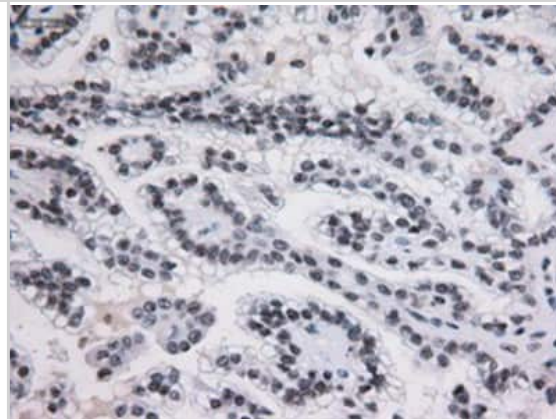
Western Blot: STAT3 Antibody (OTI21E7) [NBP1-48014] - Analysis of extracts (35ug) from different cell line by using anti-STAT3 monoclonal antibody. (1:500)



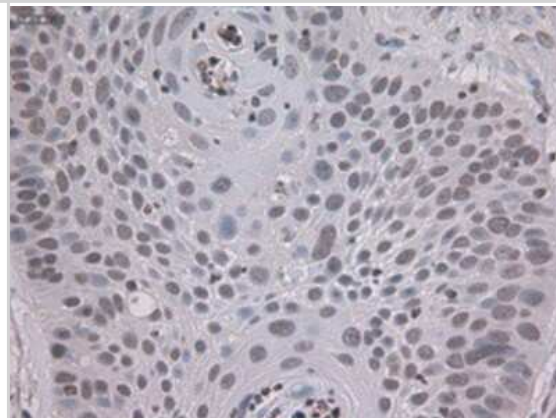
Immunohistochemistry-Paraffin: STAT3 Antibody (21E7) [NBP1-48014] - Staining of paraffin-embedded breast using anti-STAT3 mouse monoclonal antibody.



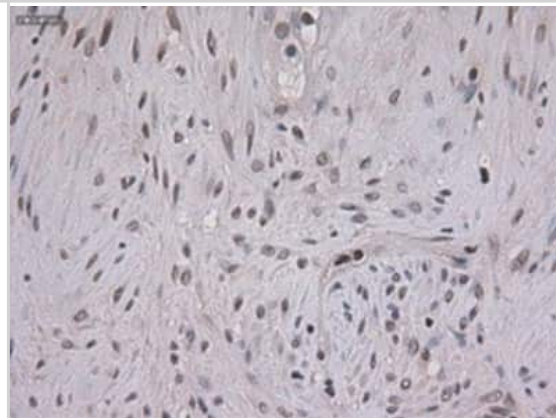
Immunohistochemistry-Paraffin: STAT3 Antibody (21E7) [NBP1-48014] - Staining of paraffin-embedded Carcinoma of kidney using anti-STAT3 mouse monoclonal antibody.



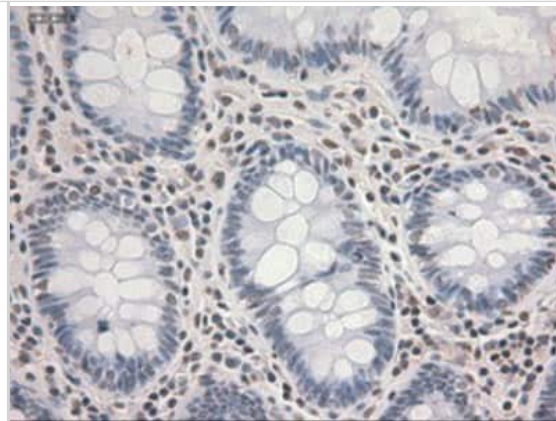
Immunohistochemistry-Paraffin: STAT3 Antibody (21E7) [NBP1-48014] - Staining of paraffin-embedded Carcinoma of lung using anti-STAT3 mouse monoclonal antibody.



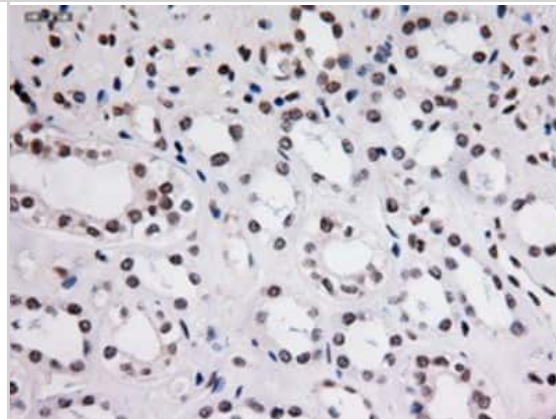
Immunohistochemistry-Paraffin: STAT3 Antibody (21E7) [NBP1-48014] - Staining of paraffin-embedded Carcinoma of pancreas using anti-STAT3 mouse monoclonal antibody.



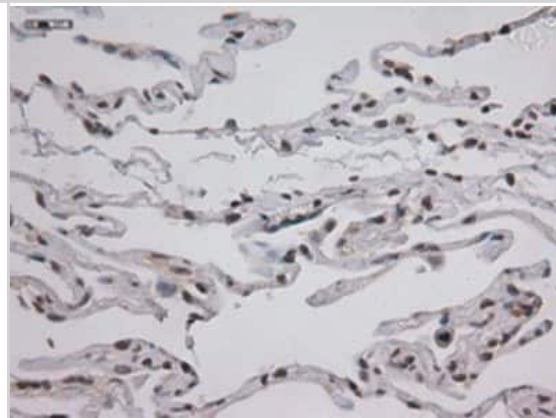
Immunohistochemistry-Paraffin: STAT3 Antibody (21E7) [NBP1-48014] - Staining of paraffin-embedded colon using anti-STAT3 mouse monoclonal antibody.



Immunohistochemistry-Paraffin: STAT3 Antibody (21E7) [NBP1-48014] - Staining of paraffin-embedded kidney using anti-STAT3 mouse monoclonal antibody.



Immunohistochemistry-Paraffin: STAT3 Antibody (21E7) [NBP1-48014] - Staining of paraffin-embedded lung using anti-STAT3 mouse monoclonal antibody.





Novus Biologicals USA

10730 E. Briarwood Avenue
Centennial, CO 80112
USA
Phone: 303.730.1950
Toll Free: 1.888.506.6887
Fax: 303.730.1966
nb-customerservice@bio-techne.com

Bio-Techne Canada

21 Canmotor Ave
Toronto, ON M8Z 4E6
Canada
Phone: 905.827.6400
Toll Free: 855.668.8722
Fax: 905.827.6402
canada.inquires@bio-techne.com

Bio-Techne Ltd

19 Barton Lane
Abingdon Science Park
Abingdon, OX14 3NB, United Kingdom
Phone: (44) (0) 1235 529449
Free Phone: 0800 37 34 15
Fax: (44) (0) 1235 533420
info.EMEA@bio-techne.com

General Contact Information

www.novusbio.com
Technical Support: nb-technical@bio-techne.com
Orders: nb-customerservice@bio-techne.com
General: novus@novusbio.com

Products Related to NBP1-48014

HAF007	Goat anti-Mouse IgG Secondary Antibody [HRP]
NB720-B	Rabbit anti-Mouse IgG (H+L) Secondary Antibody [Biotin]
NBP1-97005-0.5mg	Mouse IgG1 Isotype Control (MG1)
H00006774-P01-10ug	Recombinant Human STAT3 GST (N-Term) Protein

Limitations

This product is for research use only and is not approved for use in humans or in clinical diagnosis. Primary Antibodies are guaranteed for 1 year from date of receipt.

For more information on our 100% guarantee, please visit www.novusbio.com/guarantee

Earn gift cards/discounts by submitting a review: www.novusbio.com/reviews/submit/NBP1-48014

Earn gift cards/discounts by submitting a publication using this product:
www.novusbio.com/publications

