

# Product Datasheet

## Glucose Transporter GLUT6 Antibody (OTI7E3) NBP1-47987

Unit Size: 0.1 ml

Store at -20C. Avoid freeze-thaw cycles.

[www.novusbio.com](http://www.novusbio.com)



[technical@novusbio.com](mailto:technical@novusbio.com)

### Publications: 1

Protocols, Publications, Related Products, Reviews, Research Tools and Images at:  
[www.novusbio.com/NBP1-47987](http://www.novusbio.com/NBP1-47987)

Updated 9/9/2025 v.20.1

Earn rewards for product  
reviews and publications.

Submit a publication at [www.novusbio.com/publications](http://www.novusbio.com/publications)

Submit a review at [www.novusbio.com/reviews/destination/NBP1-47987](http://www.novusbio.com/reviews/destination/NBP1-47987)



**NBP1-47987****Glucose Transporter GLUT6 Antibody (OTI7E3)**

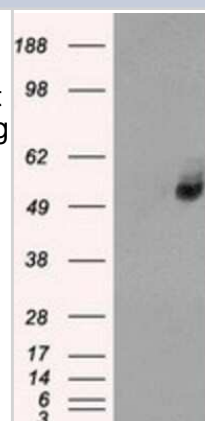
<b>Product Information</b>	
<b>Unit Size</b>	0.1 ml
<b>Concentration</b>	1.47 mg/ml
<b>Storage</b>	Store at -20C. Avoid freeze-thaw cycles.
<b>Clonality</b>	Monoclonal
<b>Clone</b>	OTI7E3
<b>Preservative</b>	0.02% Sodium Azide
<b>Isotype</b>	IgG2a
<b>Purity</b>	Immunogen affinity purified
<b>Buffer</b>	PBS (pH 7.3), 1.0% BSA and 50% Glycerol
<b>Target Molecular Weight</b>	54.5 kDa

<b>Product Description</b>	
<b>Description</b>	Novus Biologicals Mouse Glucose Transporter GLUT6 Antibody (OTI7E3) (NBP1-47987) is a monoclonal antibody validated for use in IHC, WB and ICC/IF. Anti-Glucose Transporter GLUT6 Antibody: Cited in 1 publication. All Novus Biologicals antibodies are covered by our 100% guarantee.
<b>Host</b>	Mouse
<b>Gene ID</b>	11182
<b>Gene Symbol</b>	SLC2A6
<b>Species</b>	Human
<b>Specificity/Sensitivity</b>	This antibody is specific for Homo sapiens solute carrier family 2 (facilitated glucose transporter), member 6 (SLC2A6), transcript variant 1.
<b>Immunogen</b>	Full-length protein expressed in 293T cell transfected with human SLC2A6 expression vector

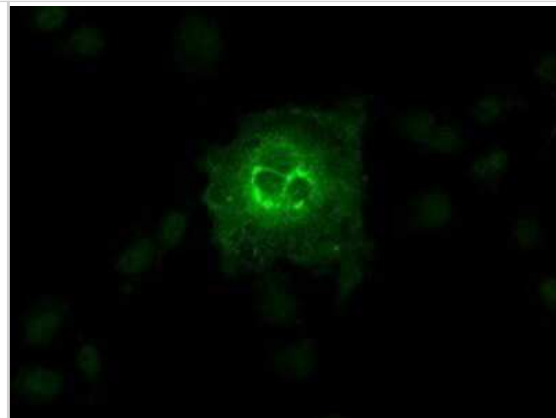
<b>Product Application Details</b>	
<b>Applications</b>	Western Blot, Immunohistochemistry-Paraffin, Immunocytochemistry/Immunofluorescence, Immunohistochemistry
<b>Recommended Dilutions</b>	Western Blot 1:200, Immunohistochemistry 1:50, Immunocytochemistry/Immunofluorescence 1:100, Immunohistochemistry-Paraffin 1:50

**Images**

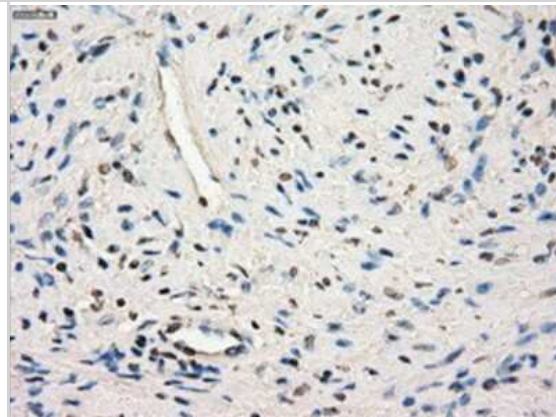
Western Blot: Glucose Transporter GLUT6 Antibody (7E3) [NBP1-47987] - HEK293T cells were transfected with the pCMV6-ENTRY control (Left lane) or pCMV6-ENTRY Glucose Transporter GLUT6 (Right lane) cDNA for 48 hrs and lysed. Equivalent amounts of cell lysates (5 ug per lane) were separated by SDS-PAGE and immunoblotted with anti-Glucose Transporter GLUT6.



Immunocytochemistry/Immunofluorescence: Glucose Transporter GLUT6 Antibody (7E3) [NBP1-47987] Staining of COS7 cells transiently transfected by pCMV6-ENTRY Glucose Transporter GLUT6.



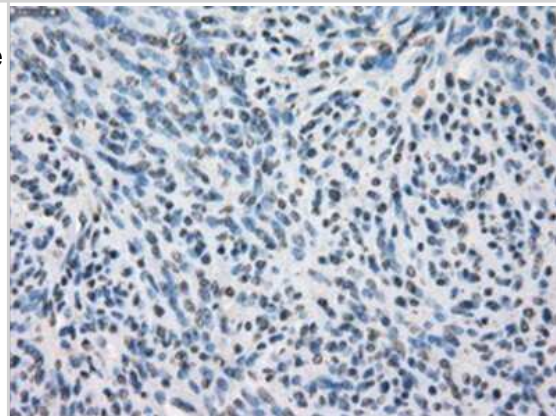
Immunohistochemistry-Paraffin: Glucose Transporter GLUT6 Antibody (7E3) [NBP1-47987] - Staining of paraffin-embedded prostate tissue using anti-Glucose Transporter GLUT6 mouse monoclonal antibody.



Immunohistochemistry-Paraffin: Glucose Transporter GLUT6 Antibody (7E3) [NBP1-47987] - Staining of paraffin-embedded colon tissue using anti-Glucose Transporter GLUT6 mouse monoclonal antibody.



Immunohistochemistry-Paraffin: Glucose Transporter GLUT6 Antibody (7E3) [NBP1-47987] - Staining of paraffin-embedded endometrium tissue using anti-Glucose Transporter GLUT6 mouse monoclonal antibody.



## Publications

Hirvonen MJ, Mulari MT, Buki KG et al. Rab13 is upregulated during osteoclast differentiation and associates with small vesicles revealing polarized distribution in resorbing cells J Histochem Cytochem 2012-07-01 [PMID: 22562557] (ICC/IF, Human)



### **Novus Biologicals USA**

10730 E. Briarwood Avenue  
Centennial, CO 80112  
USA  
Phone: 303.730.1950  
Toll Free: 1.888.506.6887  
Fax: 303.730.1966  
nb-customerservice@bio-techne.com

### **Bio-Techne Canada**

21 Canmotor Ave  
Toronto, ON M8Z 4E6  
Canada  
Phone: 905.827.6400  
Toll Free: 855.668.8722  
Fax: 905.827.6402  
canada.inquires@bio-techne.com

### **Bio-Techne Ltd**

19 Barton Lane  
Abingdon Science Park  
Abingdon, OX14 3NB, United Kingdom  
Phone: (44) (0) 1235 529449  
Free Phone: 0800 37 34 15  
Fax: (44) (0) 1235 533420  
info.EMEA@bio-techne.com

### **General Contact Information**

www.novusbio.com  
Technical Support: nb-technical@bio-techne.com  
Orders: nb-customerservice@bio-techne.com  
General: novus@novusbio.com

### **Products Related to NBP1-47987**

---

NBP2-33376H	Blue Marker Antibody (6F4-F6) [HRP]
HAF007	Goat anti-Mouse IgG Secondary Antibody [HRP]
NB7539	Goat anti-Mouse IgG (H+L) Secondary Antibody [HRP]
NBP1-96778	Mouse IgG2a Isotype Control (M2A)

---

### **Limitations**

This product is for research use only and is not approved for use in humans or in clinical diagnosis. Primary Antibodies are guaranteed for 1 year from date of receipt.

For more information on our 100% guarantee, please visit [www.novusbio.com/guarantee](http://www.novusbio.com/guarantee)

Earn gift cards/discounts by submitting a review: [www.novusbio.com/reviews/submit/NBP1-47987](http://www.novusbio.com/reviews/submit/NBP1-47987)

Earn gift cards/discounts by submitting a publication using this product:  
[www.novusbio.com/publications](http://www.novusbio.com/publications)

