

# Product Datasheet

## Siglec-9 Antibody (OT11D9)

### NBP1-47969

Unit Size: 0.1 ml

Store at -20C. Avoid freeze-thaw cycles.

[www.novusbio.com](http://www.novusbio.com)



[technical@novusbio.com](mailto:technical@novusbio.com)

Protocols, Publications, Related Products, Reviews, Research Tools and Images at:  
[www.novusbio.com/NBP1-47969](http://www.novusbio.com/NBP1-47969)

Updated 3/7/2023 v.20.1

Earn rewards for product  
reviews and publications.

Submit a publication at [www.novusbio.com/publications](http://www.novusbio.com/publications)

Submit a review at [www.novusbio.com/reviews/destination/NBP1-47969](http://www.novusbio.com/reviews/destination/NBP1-47969)



**NBP1-47969**

Siglec-9 Antibody (OT11D9)

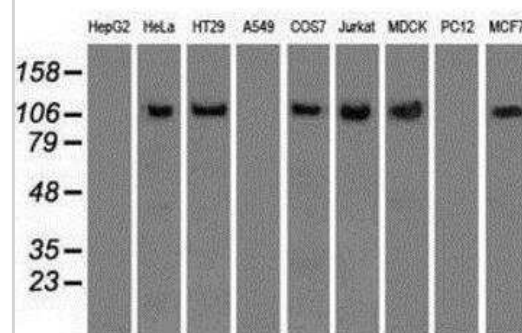
Product Information	
Unit Size	0.1 ml
Concentration	0.7 mg/ml
Storage	Store at -20C. Avoid freeze-thaw cycles.
Clonality	Monoclonal
Clone	OT11D9
Preservative	0.02% Sodium Azide
Isotype	IgG1
Purity	Immunogen affinity purified
Buffer	PBS (pH 7.3), 1.0% BSA and 50% Glycerol
Target Molecular Weight	50.1 kDa

Product Description	
Host	Mouse
Gene ID	27180
Gene Symbol	SIGLEC9
Species	Human, Canine, Monkey
Specificity/Sensitivity	This antibody is specific for Homo sapiens sialic acid binding Ig-like lectin 9 (SIGLEC9).
Immunogen	Full length human recombinant protein of human SIGLEC9 (NP_055256) produced in HEK293T cell.

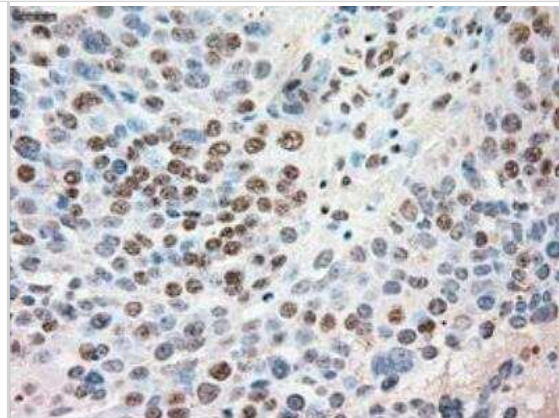
Product Application Details	
Applications	Western Blot, Immunohistochemistry, Immunohistochemistry-Paraffin
Recommended Dilutions	Western Blot 1:20000-40000, Immunohistochemistry 1:50, Immunohistochemistry-Paraffin 1:50

**Images**

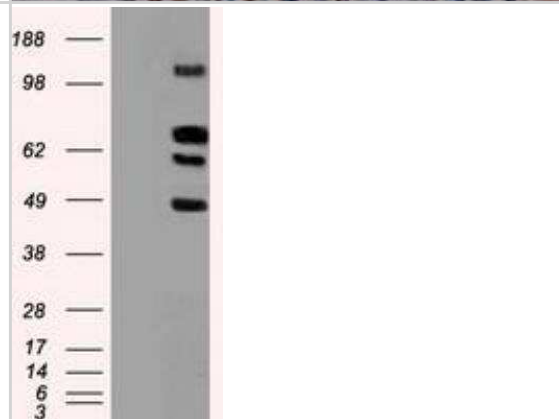
Western Blot: Siglec-9 Antibody (1D9) [NBP1-47969] - Analysis of extracts (35ug) from 9 different cell lines by using anti-Siglec-9 monoclonal antibody.



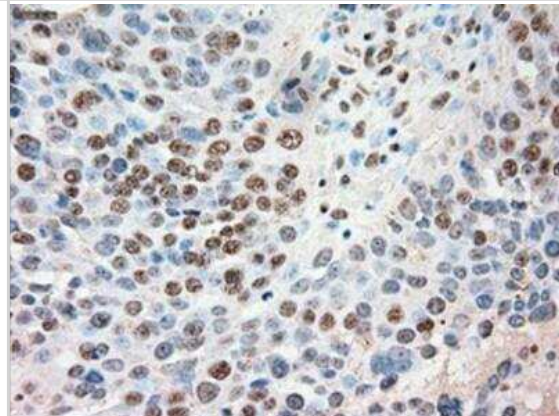
Immunohistochemistry-Paraffin: Siglec-9 Antibody (1D9) [NBP1-47969] - Staining of paraffin-embedded Human pancreas tissue using anti-Siglec-9 mouse monoclonal antibody.



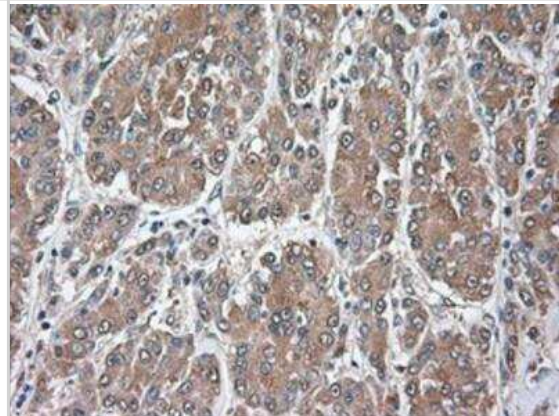
Western Blot: Siglec-9 Antibody (1D9) [NBP1-47969] - HEK293T cells were transfected with the pCMV6-ENTRY control (Left lane) or pCMV6-ENTRY Siglec-9 (Right lane) cDNA for 48 hrs and lysed. Equivalent amounts of cell lysates (5 ug per lane) were separated by SDS-PAGE and immunoblotted with anti-Siglec-9.



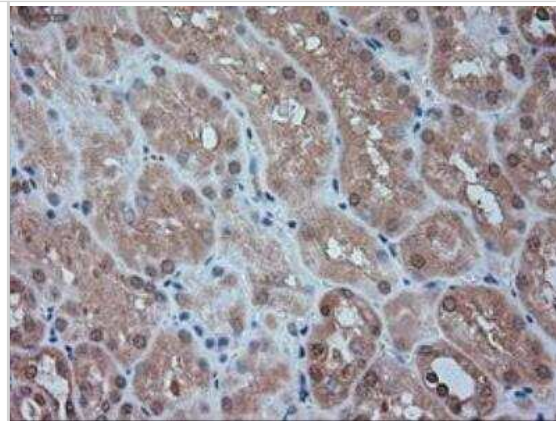
Immunohistochemistry-Paraffin: Siglec-9 Antibody (1D9) [NBP1-47969] - Staining of paraffin-embedded Adenocarcinoma of Human ovary tissue using anti-Siglec-9 mouse monoclonal antibody.



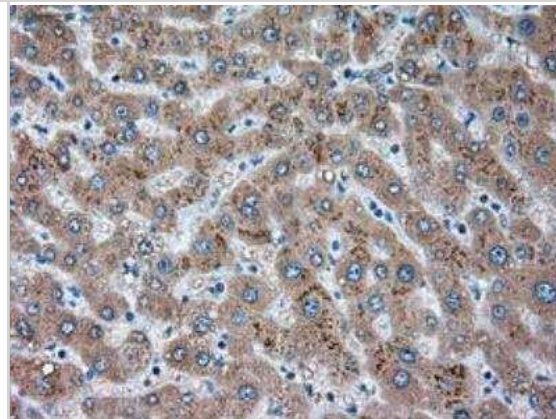
Immunohistochemistry-Paraffin: Siglec-9 Antibody (1D9) [NBP1-47969] - Staining of paraffin-embedded Carcinoma of Human liver tissue using anti-Siglec-9 mouse monoclonal antibody.



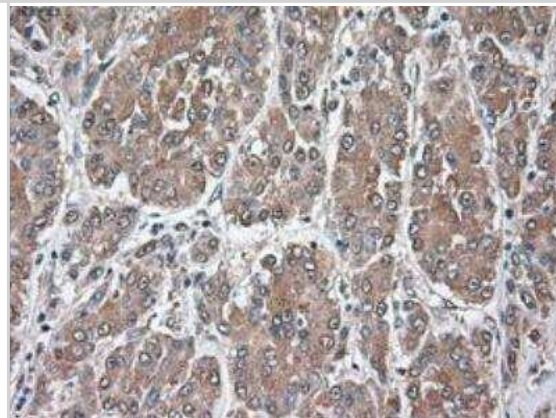
Immunohistochemistry-Paraffin: Siglec-9 Antibody (1D9) [NBP1-47969] - Staining of paraffin-embedded Carcinoma of Human thyroid tissue using anti-Siglec-9 mouse monoclonal antibody.



Immunohistochemistry-Paraffin: Siglec-9 Antibody (1D9) [NBP1-47969] - Staining of paraffin-embedded Human Kidney tissue using anti-Siglec-9 mouse monoclonal antibody.



Immunohistochemistry-Paraffin: Siglec-9 Antibody (1D9) [NBP1-47969] - Staining of paraffin-embedded Human liver tissue using anti-Siglec-9 mouse monoclonal antibody.





### **Novus Biologicals USA**

10730 E. Briarwood Avenue  
Centennial, CO 80112  
USA  
Phone: 303.730.1950  
Toll Free: 1.888.506.6887  
Fax: 303.730.1966  
nb-customerservice@bio-techne.com

### **Bio-Techne Canada**

21 Canmotor Ave  
Toronto, ON M8Z 4E6  
Canada  
Phone: 905.827.6400  
Toll Free: 855.668.8722  
Fax: 905.827.6402  
canada.inquires@bio-techne.com

### **Bio-Techne Ltd**

19 Barton Lane  
Abingdon Science Park  
Abingdon, OX14 3NB, United Kingdom  
Phone: (44) (0) 1235 529449  
Free Phone: 0800 37 34 15  
Fax: (44) (0) 1235 533420  
info.EMEA@bio-techne.com

### **General Contact Information**

www.novusbio.com  
Technical Support: nb-technical@bio-techne.com  
Orders: nb-customerservice@bio-techne.com  
General: novus@novusbio.com

### **Products Related to NBP1-47969**

---

HAF007	Goat anti-Mouse IgG Secondary Antibody [HRP]
NB720-B	Rabbit anti-Mouse IgG (H+L) Secondary Antibody [Biotin]
NBP1-97005-0.5mg	Mouse IgG1 Isotype Control (MG1)
NBP2-59906-50ug	Recombinant Human Siglec-9 hIgG-His Protein

---

### **Limitations**

This product is for research use only and is not approved for use in humans or in clinical diagnosis. Primary Antibodies are guaranteed for 1 year from date of receipt.

For more information on our 100% guarantee, please visit [www.novusbio.com/guarantee](http://www.novusbio.com/guarantee)

Earn gift cards/discounts by submitting a review: [www.novusbio.com/reviews/submit/NBP1-47969](http://www.novusbio.com/reviews/submit/NBP1-47969)

Earn gift cards/discounts by submitting a publication using this product:  
[www.novusbio.com/publications](http://www.novusbio.com/publications)

