

Product Datasheet

SATB1 Antibody (OTI13D6)

NBP1-47950

Unit Size: 0.1 ml

Store at -20C. Avoid freeze-thaw cycles.

www.novusbio.com



technical@novusbio.com

Reviews: 1

Protocols, Publications, Related Products, Reviews, Research Tools and Images at:
www.novusbio.com/NBP1-47950

Updated 9/9/2025 v.20.1

Earn rewards for product
reviews and publications.

Submit a publication at www.novusbio.com/publications

Submit a review at www.novusbio.com/reviews/destination/NBP1-47950



NBP1-47950

SATB1 Antibody (OTI13D6)

Product Information	
Unit Size	0.1 ml
Concentration	1 mg/ml
Storage	Store at -20C. Avoid freeze-thaw cycles.
Clonality	Monoclonal
Clone	OTI13D6
Preservative	0.02% Sodium Azide
Isotype	IgG1
Purity	Immunogen affinity purified
Buffer	PBS (pH 7.3), 1.0% BSA and 50% Glycerol
Target Molecular Weight	86 kDa

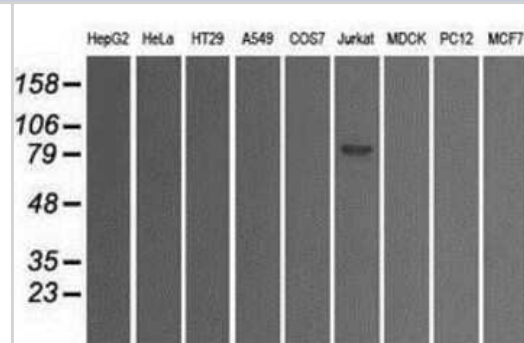
Product Description	
Description	Novus Biologicals Mouse SATB1 Antibody (OTI13D6) (NBP1-47950) is a monoclonal antibody validated for use in IHC, WB and ICC/IF. All Novus Biologicals antibodies are covered by our 100% guarantee.
Host	Mouse
Gene ID	6304
Gene Symbol	SATB1
Species	Human, Mouse, Rat
Reactivity Notes	Please note that this antibody is reactive to Mouse and derived from the same host, Mouse. Mouse-On-Mouse blocking reagent may be needed for IHC and ICC experiments to reduce high background signal. You can find these reagents under catalog numbers PK-2200-NB and MP-2400-NB. Please contact Technical Support if you have any questions.
Specificity/Sensitivity	This antibody is specific for Homo sapiens SATB homeobox 1 (SATB1), transcript variant 1.
Immunogen	Full-length protein expressed in 293T cell transfected with human SATB1 expression vector

Product Application Details	
Applications	Western Blot, Immunohistochemistry-Paraffin, Immunocytochemistry/Immunofluorescence, Immunohistochemistry
Recommended Dilutions	Western Blot 1:2000, Immunohistochemistry 1:50, Immunocytochemistry/Immunofluorescence 1:100, Immunohistochemistry-Paraffin 1:50

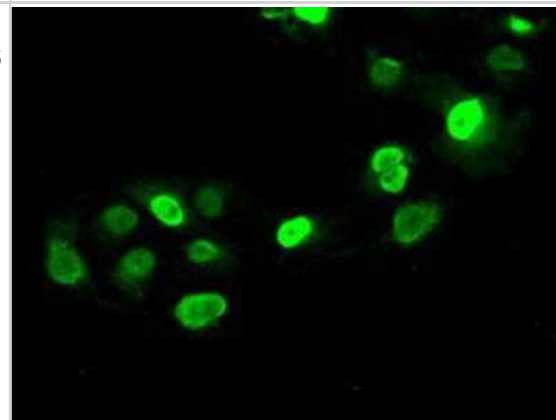


Images

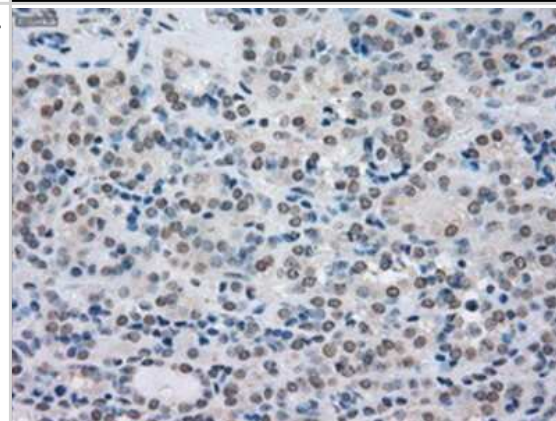
Western Blot: SATB1 Antibody (13D6) [NBP1-47950] Analysis of extracts (35ug) from 9 different cell lines by using anti-SATB1 monoclonal antibody.



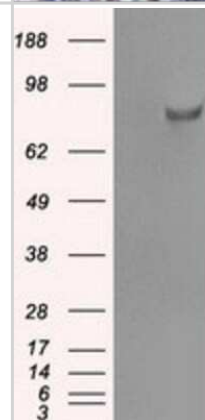
Immunocytochemistry/Immunofluorescence: SATB1 Antibody (13D6) [NBP1-47950] - Staining of COS7 cells transiently transfected by pCMV6-ENTRY SATB1.



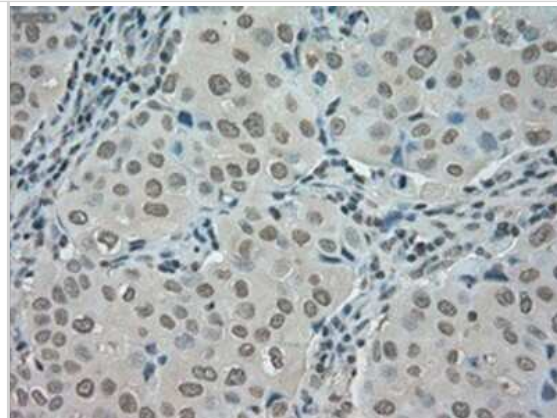
Immunohistochemistry-Paraffin: SATB1 Antibody (13D6) [NBP1-47950] - Staining of paraffin-embedded Carcinoma of thyroid tissue using anti-SATB1 mouse monoclonal antibody.



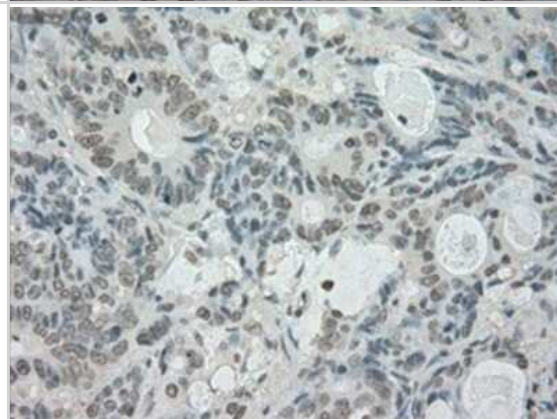
Western Blot: SATB1 Antibody (13D6) [NBP1-47950] - HEK293T cells were transfected with the pCMV6-ENTRY control (Left lane) or pCMV6-ENTRY SATB1 (Right lane) cDNA for 48 hrs and lysed. Equivalent amounts of cell lysates (5 ug per lane) were separated by SDS-PAGE and immunoblotted with anti-SATB1.



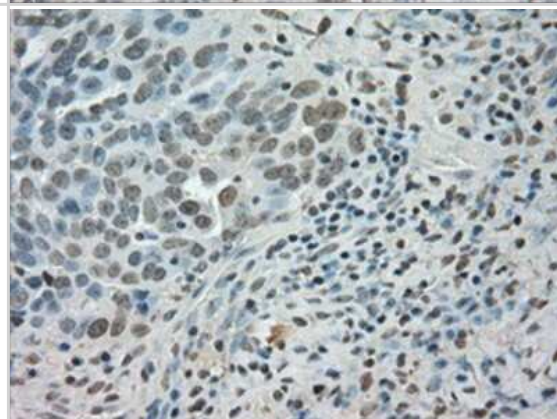
Immunohistochemistry-Paraffin: SATB1 Antibody (13D6) [NBP1-47950] - Staining of paraffin-embedded Adenocarcinoma of breast tissue using anti-SATB1 mouse monoclonal antibody.



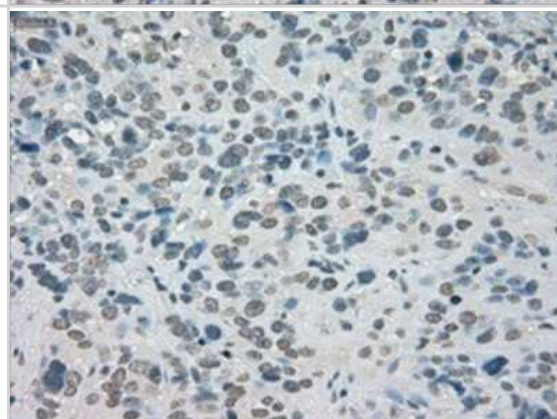
Immunohistochemistry-Paraffin: SATB1 Antibody (13D6) [NBP1-47950] - Staining of paraffin-embedded Adenocarcinoma of colon tissue using anti-SATB1 mouse monoclonal antibody.



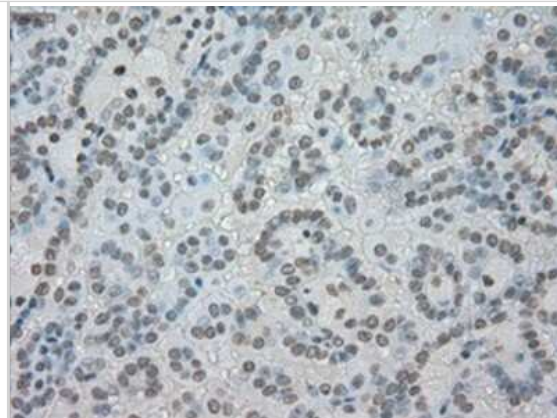
Immunohistochemistry-Paraffin: SATB1 Antibody (13D6) [NBP1-47950] - Staining of paraffin-embedded Adenocarcinoma of ovary tissue using anti-SATB1 mouse monoclonal antibody.



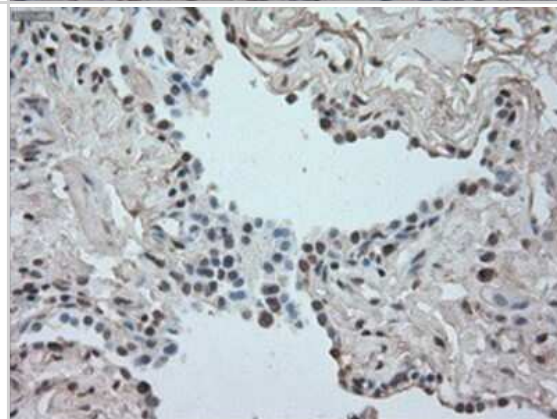
Immunohistochemistry-Paraffin: SATB1 Antibody (13D6) [NBP1-47950] - Staining of paraffin-embedded Carcinoma of bladder tissue using anti-SATB1 mouse monoclonal antibody.



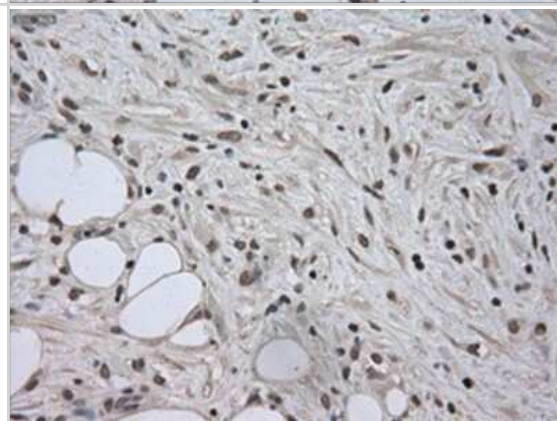
Immunohistochemistry-Paraffin: SATB1 Antibody (13D6) [NBP1-47950] - Staining of paraffin-embedded Carcinoma of kidney tissue using anti-SATB1 mouse monoclonal antibody.



Immunohistochemistry-Paraffin: SATB1 Antibody (13D6) [NBP1-47950] - Staining of paraffin-embedded Carcinoma of lung tissue using anti-SATB1 mouse monoclonal antibody.



Immunohistochemistry-Paraffin: SATB1 Antibody (13D6) [NBP1-47950] - Staining of paraffin-embedded Carcinoma of pancreas tissue using anti-SATB1 mouse monoclonal antibody.





Novus Biologicals USA

10730 E. Briarwood Avenue
Centennial, CO 80112
USA
Phone: 303.730.1950
Toll Free: 1.888.506.6887
Fax: 303.730.1966
nb-customerservice@bio-techne.com

Bio-Techne Canada

21 Canmotor Ave
Toronto, ON M8Z 4E6
Canada
Phone: 905.827.6400
Toll Free: 855.668.8722
Fax: 905.827.6402
canada.inquires@bio-techne.com

Bio-Techne Ltd

19 Barton Lane
Abingdon Science Park
Abingdon, OX14 3NB, United Kingdom
Phone: (44) (0) 1235 529449
Free Phone: 0800 37 34 15
Fax: (44) (0) 1235 533420
info.EMEA@bio-techne.com

General Contact Information

www.novusbio.com
Technical Support: nb-technical@bio-techne.com
Orders: nb-customerservice@bio-techne.com
General: novus@novusbio.com

Products Related to NBP1-47950

HAF007	Goat anti-Mouse IgG Secondary Antibody [HRP]
NB720-B	Rabbit anti-Mouse IgG (H+L) Secondary Antibody [Biotin]
NBP1-97005-0.5mg	Mouse IgG1 Isotype Control (MG1)
NBP2-54994PEP	SATB1 Recombinant Protein Antigen

Limitations

This product is for research use only and is not approved for use in humans or in clinical diagnosis. Primary Antibodies are guaranteed for 1 year from date of receipt.

For more information on our 100% guarantee, please visit www.novusbio.com/guarantee

Earn gift cards/discounts by submitting a review: www.novusbio.com/reviews/submit/NBP1-47950

Earn gift cards/discounts by submitting a publication using this product:
www.novusbio.com/publications

