

Product Datasheet

Protein Kinase A regulatory subunit I alpha Antibody (OTI6C7) NBP1-47935

Unit Size: 0.1 ml

Store at -20C. Avoid freeze-thaw cycles.

www.novusbio.com



technical@novusbio.com

Reviews: 1 Publications: 1

Protocols, Publications, Related Products, Reviews, Research Tools and Images at:
www.novusbio.com/NBP1-47935

Updated 10/23/2024 v.20.1

Earn rewards for product
reviews and publications.

Submit a publication at www.novusbio.com/publications

Submit a review at www.novusbio.com/reviews/destination/NBP1-47935



NBP1-47935

Protein Kinase A regulatory subunit I alpha Antibody (OTI6C7)

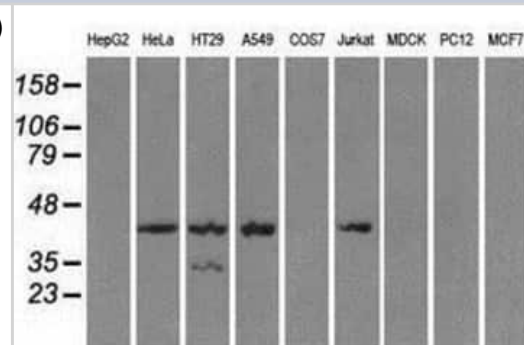
Product Information	
Unit Size	0.1 ml
Concentration	1 mg/ml
Storage	Store at -20C. Avoid freeze-thaw cycles.
Clonality	Monoclonal
Clone	OTI6C7
Preservative	0.02% Sodium Azide
Isotype	IgG1
Purity	Immunogen affinity purified
Buffer	PBS (pH 7.3), 1.0% BSA and 50% Glycerol
Target Molecular Weight	43 kDa

Product Description	
Host	Mouse
Gene ID	5573
Gene Symbol	PRKAR1A
Species	Human, Mouse, Rat
Reactivity Notes	Please note that this antibody is reactive to Mouse and derived from the same host, Mouse. Mouse-On-Mouse blocking reagent may be needed for IHC and ICC experiments to reduce high background signal. You can find these reagents under catalog numbers PK-2200-NB and MP-2400-NB. Please contact Technical Support if you have any questions.
Specificity/Sensitivity	This antibody is specific for Homo sapiens protein kinase, cAMP-dependent, regulatory, type I, alpha (tissue specific extinguisher 1) (PRKAR1A), transcript variant 3.
Immunogen	Full-length protein expressed in 293T cell transfected with human PRKAR1A expression vector

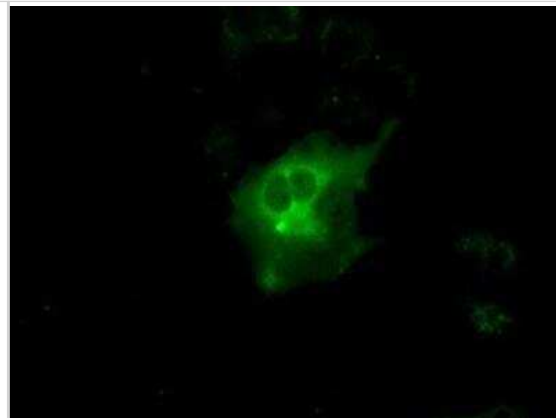
Product Application Details	
Applications	Western Blot, Immunocytochemistry/ Immunofluorescence, Immunohistochemistry, Immunohistochemistry-Paraffin
Recommended Dilutions	Western Blot 1:2000, Immunohistochemistry 1:50, Immunocytochemistry/ Immunofluorescence 1:100, Immunohistochemistry-Paraffin 1:50

Images

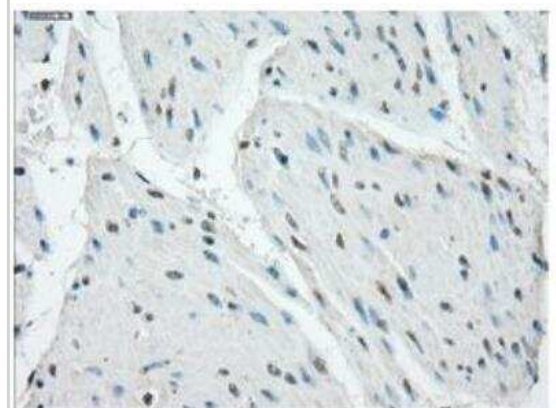
Western Blot: Protein Kinase A regulatory subunit I alpha Antibody (6C7) [NBP1-47935] Analysis of extracts (35ug) from 9 different cell lines by using anti-Protein Kinase A regulatory subunit I alpha monoclonal antibody.



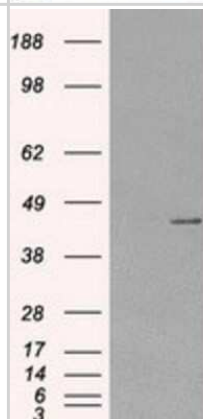
Immunocytochemistry/Immunofluorescence: Protein Kinase A regulatory subunit I alpha Antibody (OTI6C7) [NBP1-47935] - Staining of COS7 cells transiently transfected by pCMV6-ENTRY Protein Kinase A regulatory subunit I alpha.



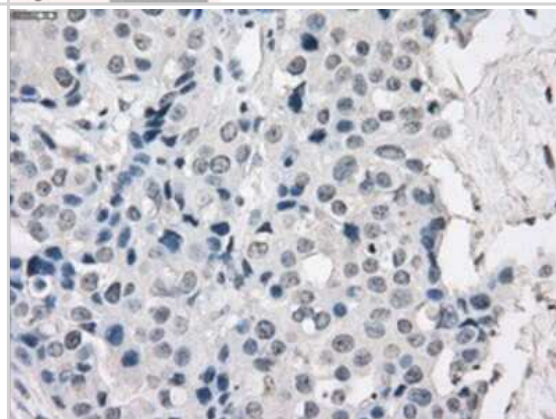
Immunohistochemistry-Paraffin: Protein Kinase A regulatory subunit I alpha Antibody (OTI6C7) [NBP1-47935] - Staining of paraffin-embedded carcinoma of bladder tissue (Heat-induced epitope retrieval by 10mM citric buffer, pH6.0, 100C for 10min, Dilution 1:50).



Western Blot: Protein Kinase A regulatory subunit I alpha Antibody (6C7) [NBP1-47935] - HEK293T cells were transfected with the pCMV6-ENTRY control (Left lane) or pCMV6-ENTRY Protein Kinase A regulatory subunit I alpha (Right lane) cDNA for 48 hrs and lysed. Equivalent amounts of cell lysates (5 ug per lane) were separated by SDS-PAGE and immunoblotted with anti-Protein Kinase A regulatory subunit I alpha.



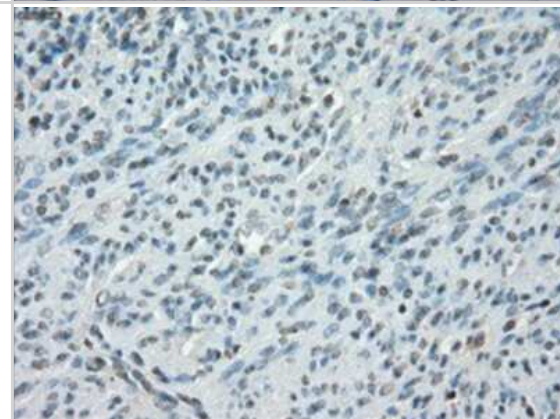
Immunohistochemistry-Paraffin: Protein Kinase A regulatory subunit I alpha Antibody (6C7) [NBP1-47935] - Staining of paraffin-embedded Adenocarcinoma of breast tissue using anti-Protein Kinase A regulatory subunit I alpha mouse monoclonal antibody.



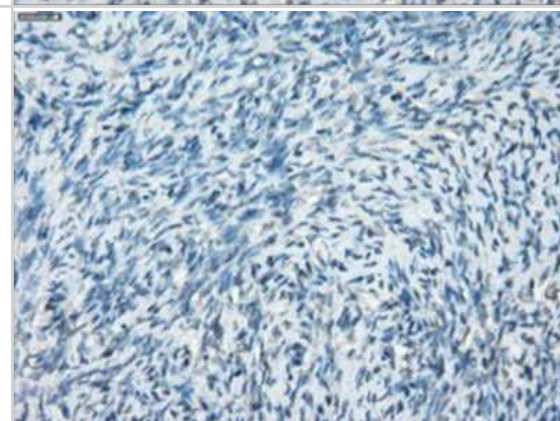
Immunohistochemistry-Paraffin: Protein Kinase A regulatory subunit I alpha Antibody (6C7) [NBP1-47935] - Staining of paraffin-embedded colon tissue using anti-Protein Kinase A regulatory subunit I alpha mouse monoclonal antibody.



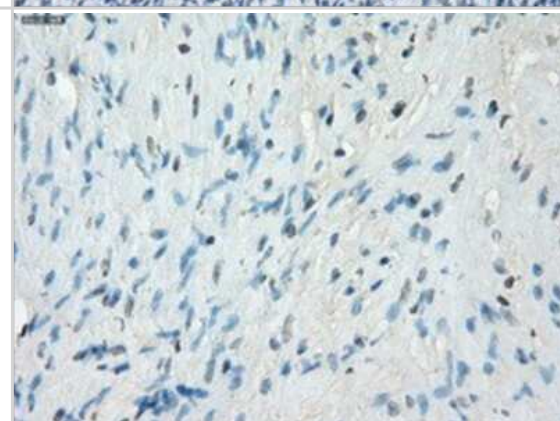
Immunohistochemistry-Paraffin: Protein Kinase A regulatory subunit I alpha Antibody (6C7) [NBP1-47935] - Staining of paraffin-embedded endometrium tissue using anti-Protein Kinase A regulatory subunit I alpha mouse monoclonal antibody.



Immunohistochemistry-Paraffin: Protein Kinase A regulatory subunit I alpha Antibody (6C7) [NBP1-47935] - Staining of paraffin-embedded Ovary tissue using anti-Protein Kinase A regulatory subunit I alpha mouse monoclonal antibody.



Immunohistochemistry-Paraffin: Protein Kinase A regulatory subunit I alpha Antibody (6C7) [NBP1-47935] - Staining of paraffin-embedded prostate tissue using anti-Protein Kinase A regulatory subunit I alpha mouse monoclonal antibody.



Publications

Bullen JW, Tchernyshyov I, Holewinski RJ et al. Protein kinase A-dependent phosphorylation stimulates the transcriptional activity of hypoxia-inducible factor 1 Sci Signal 2016-05-31 [PMID: 27245613] (WB, Human)



Novus Biologicals USA

10730 E. Briarwood Avenue
Centennial, CO 80112
USA
Phone: 303.730.1950
Toll Free: 1.888.506.6887
Fax: 303.730.1966
nb-customerservice@bio-techne.com

Bio-Techne Canada

21 Canmotor Ave
Toronto, ON M8Z 4E6
Canada
Phone: 905.827.6400
Toll Free: 855.668.8722
Fax: 905.827.6402
canada.inquires@bio-techne.com

Bio-Techne Ltd

19 Barton Lane
Abingdon Science Park
Abingdon, OX14 3NB, United Kingdom
Phone: (44) (0) 1235 529449
Free Phone: 0800 37 34 15
Fax: (44) (0) 1235 533420
info.EMEA@bio-techne.com

General Contact Information

www.novusbio.com
Technical Support: nb-technical@bio-techne.com
Orders: nb-customerservice@bio-techne.com
General: novus@novusbio.com

Products Related to NBP1-47935

HAF007	Goat anti-Mouse IgG Secondary Antibody [HRP]
NB720-B	Rabbit anti-Mouse IgG (H+L) Secondary Antibody [Biotin]
NBP1-97005-0.5mg	Mouse IgG1 Isotype Control (MG1)
H00005573-P01-10ug	Recombinant Human Protein Kinase A regulatory subunit I alpha GST (N-Term) Protein

Limitations

This product is for research use only and is not approved for use in humans or in clinical diagnosis. Primary Antibodies are guaranteed for 1 year from date of receipt.

For more information on our 100% guarantee, please visit www.novusbio.com/guarantee

Earn gift cards/discounts by submitting a review: www.novusbio.com/reviews/submit/NBP1-47935

Earn gift cards/discounts by submitting a publication using this product:
www.novusbio.com/publications

