

# Product Datasheet

## Lactate Dehydrogenase A/LDHA Antibody (OTI2D11) NBP1-47822

Unit Size: 0.1 ml

Store at -20C. Avoid freeze-thaw cycles.

[www.novusbio.com](http://www.novusbio.com)



[technical@novusbio.com](mailto:technical@novusbio.com)

### Publications: 2

Protocols, Publications, Related Products, Reviews, Research Tools and Images at:  
[www.novusbio.com/NBP1-47822](http://www.novusbio.com/NBP1-47822)

Updated 10/23/2024 v.20.1

Earn rewards for product  
reviews and publications.

Submit a publication at [www.novusbio.com/publications](http://www.novusbio.com/publications)

Submit a review at [www.novusbio.com/reviews/destination/NBP1-47822](http://www.novusbio.com/reviews/destination/NBP1-47822)

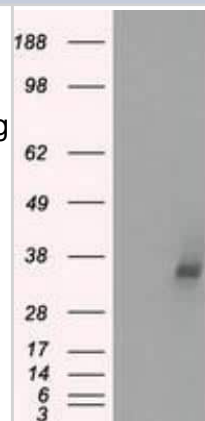


**NBP1-47822****Lactate Dehydrogenase A/LDHA Antibody (OTI2D11)**

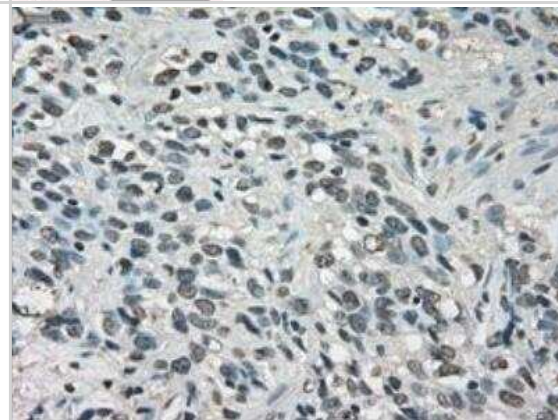
<b>Product Information</b>	
<b>Unit Size</b>	0.1 ml
<b>Concentration</b>	1 mg/ml
<b>Storage</b>	Store at -20C. Avoid freeze-thaw cycles.
<b>Clonality</b>	Monoclonal
<b>Clone</b>	OTI2D11
<b>Preservative</b>	0.02% Sodium Azide
<b>Isotype</b>	IgG1
<b>Purity</b>	Immunogen affinity purified
<b>Buffer</b>	PBS (pH 7.3), 1.0% BSA and 50% Glycerol
<b>Target Molecular Weight</b>	36.5 kDa
<b>Product Description</b>	
<b>Host</b>	Mouse
<b>Gene ID</b>	3939
<b>Gene Symbol</b>	LDHA
<b>Species</b>	Human, Mouse, Rat, Canine, Monkey
<b>Reactivity Notes</b>	Please note that this antibody is reactive to Mouse and derived from the same host, Mouse. Mouse-On-Mouse blocking reagent may be needed for IHC and ICC experiments to reduce high background signal. You can find these reagents under catalog numbers PK-2200-NB and MP-2400-NB. Please contact Technical Support if you have any questions.
<b>Specificity/Sensitivity</b>	This antibody is specific for Homo sapiens lactate dehydrogenase A (LDHA), transcript variant 1.
<b>Immunogen</b>	Full length human recombinant protein of human LDHA (NP_005557) produced in HEK293T cell.
<b>Product Application Details</b>	
<b>Applications</b>	Western Blot, Immunocytochemistry/ Immunofluorescence, Immunohistochemistry, Immunohistochemistry-Paraffin, Immunoprecipitation
<b>Recommended Dilutions</b>	Western Blot 1:1000, Immunohistochemistry 1:50, Immunocytochemistry/ Immunofluorescence, Immunoprecipitation 2ug/500ul, Immunohistochemistry-Paraffin 1:50
<b>Application Notes</b>	WB, ICC/IF reactivity reported in (PMID: 22659615).

## Images

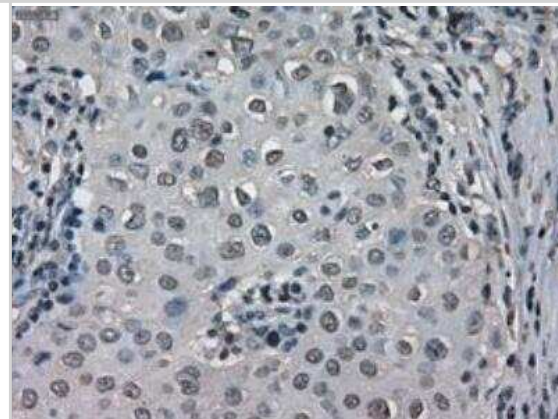
Western Blot: Lactate Dehydrogenase A/LDHA Antibody (2D11) [NBP1-47822] - HEK293T cells were transfected with the pCMV6-ENTRY control (Left lane) or pCMV6-ENTRY Lactate Dehydrogenase A (Right lane) cDNA for 48 hrs and lysed. Equivalent amounts of cell lysates (5 ug per lane) were separated by SDS-PAGE and immunoblotted with anti-Lactate Dehydrogenase A.



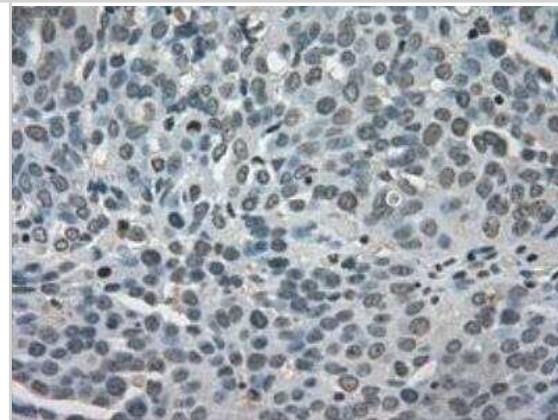
Immunohistochemistry-Paraffin: Lactate Dehydrogenase A/LDHA Antibody (2D11) [NBP1-47822] - Staining of paraffin-embedded Carcinoma of Human thyroid tissue using anti-Lactate Dehydrogenase A mouse monoclonal antibody.



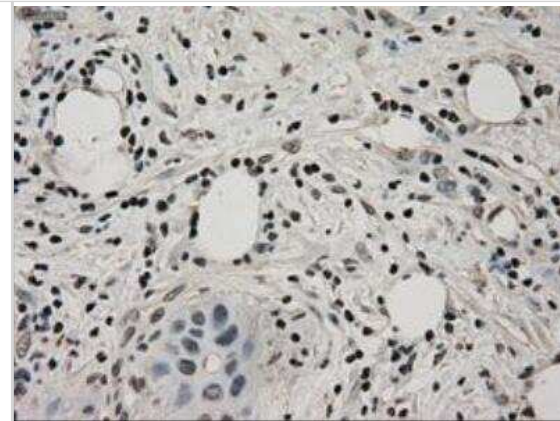
Immunohistochemistry-Paraffin: Lactate Dehydrogenase A/LDHA Antibody (2D11) [NBP1-47822] - Staining of paraffin-embedded Adenocarcinoma of Human breast tissue using anti-Lactate Dehydrogenase A mouse monoclonal antibody.



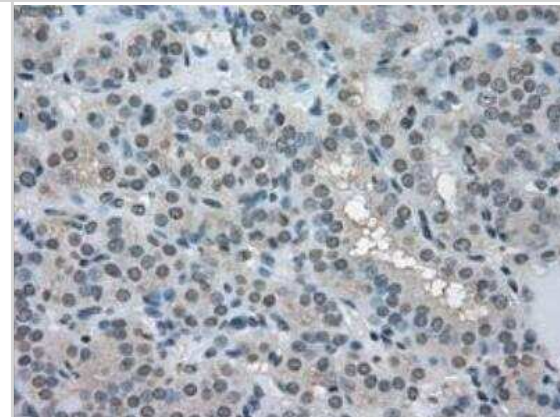
Immunohistochemistry-Paraffin: Lactate Dehydrogenase A/LDHA Antibody (2D11) [NBP1-47822] - Staining of paraffin-embedded Adenocarcinoma of Human endometrium tissue using anti-Lactate Dehydrogenase A mouse monoclonal antibody.



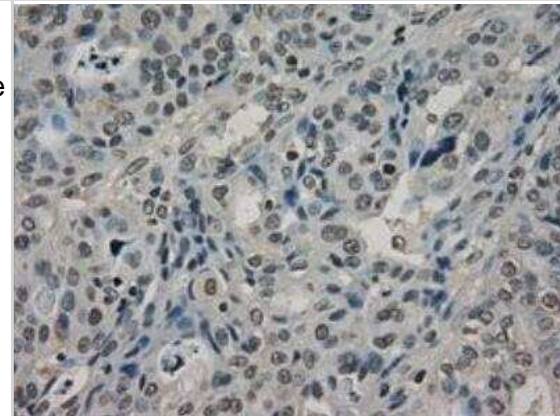
Immunohistochemistry-Paraffin: Lactate Dehydrogenase A/LDHA Antibody (2D11) [NBP1-47822] - Staining of paraffin-embedded Adenocarcinoma of Human ovary tissue using anti-Lactate Dehydrogenase A mouse monoclonal antibody.



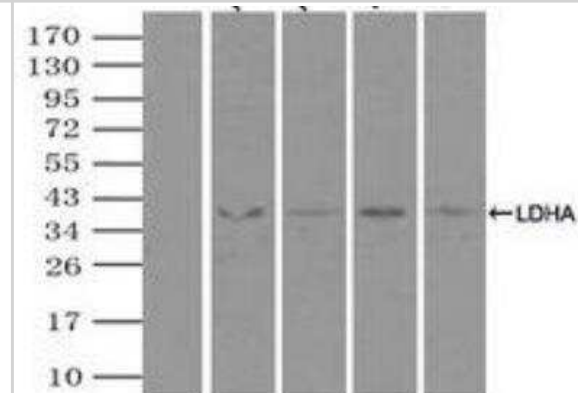
Immunohistochemistry-Paraffin: Lactate Dehydrogenase A/LDHA Antibody (2D11) [NBP1-47822] - Staining of paraffin-embedded Carcinoma of Human bladder tissue using anti-Lactate Dehydrogenase A mouse monoclonal antibody.



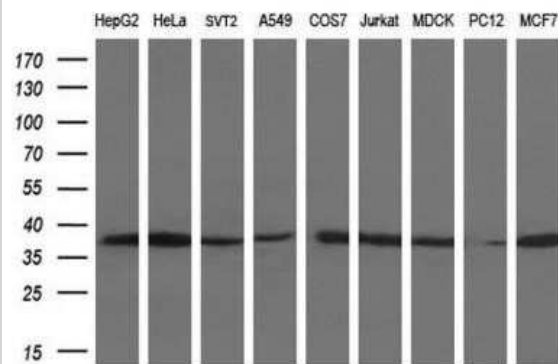
Immunohistochemistry-Paraffin: Lactate Dehydrogenase A/LDHA Antibody (2D11) [NBP1-47822] - Staining of paraffin-embedded Carcinoma of Human pancreas tissue using anti-Lactate Dehydrogenase A mouse monoclonal antibody.



Immunoprecipitation: Lactate Dehydrogenase A/LDHA Antibody (2D11) [NBP1-47822] - Lane 1: Negative Control Lane 2: NBP1-47824 Lane 3: NBP1-47825 Lane 4: NBP1-47823 Lane 5: NBP1-47822



Western Blot: Lactate Dehydrogenase A/LDHA Antibody (OTI2D11) [NBP1-47822] - Analysis of extracts (35ug) from 9 different cell lines by using anti-LDHA monoclonal antibody at 1:200 dilution. (HepG2: human; HeLa: human; SVT2: mouse; A549: human; COS7: monkey; Jurkat: human; MDCK: canine; PC12: rat; MCF7: human)



## Publications

Luo W, Chang R, Zhong J, Pandey A, Semenza GL. Histone demethylase JMJD2C is a coactivator for hypoxia-inducible factor 1 that is required for breast cancer progression. *Proc Natl Acad Sci U S A*. 2012-12-04 [PMID: 23129632]

Pizzuto R, Paventi G, Porcile C, Sarnataro D, Daniele A, Passarella S. L-Lactate metabolism in HEP G2 cell mitochondria due to the L-Lactate dehydrogenase determines the occurrence of the lactate/pyruvate shuttle and the appearance of oxaloacetate, malate and citrate outside mitochondria. *Biochim Biophys Acta*. 2012-05-31 [PMID: 22659615] (ICC/IF, WB, Human)



### **Novus Biologicals USA**

10730 E. Briarwood Avenue  
Centennial, CO 80112  
USA  
Phone: 303.730.1950  
Toll Free: 1.888.506.6887  
Fax: 303.730.1966  
nb-customerservice@bio-techne.com

### **Bio-Techne Canada**

21 Canmotor Ave  
Toronto, ON M8Z 4E6  
Canada  
Phone: 905.827.6400  
Toll Free: 855.668.8722  
Fax: 905.827.6402  
canada.inquires@bio-techne.com

### **Bio-Techne Ltd**

19 Barton Lane  
Abingdon Science Park  
Abingdon, OX14 3NB, United Kingdom  
Phone: (44) (0) 1235 529449  
Free Phone: 0800 37 34 15  
Fax: (44) (0) 1235 533420  
info.EMEA@bio-techne.com

### **General Contact Information**

www.novusbio.com  
Technical Support: nb-technical@bio-techne.com  
Orders: nb-customerservice@bio-techne.com  
General: novus@novusbio.com

### **Products Related to NBP1-47822**

---

HAF007	Goat anti-Mouse IgG Secondary Antibody [HRP]
NB720-B	Rabbit anti-Mouse IgG (H+L) Secondary Antibody [Biotin]
NBP1-97005-0.5mg	Mouse IgG1 Isotype Control (MG1)
NBP1-48336PEP	Lactate Dehydrogenase A/LDHA Antibody Blocking Peptide

---

### **Limitations**

This product is for research use only and is not approved for use in humans or in clinical diagnosis. Primary Antibodies are guaranteed for 1 year from date of receipt.

For more information on our 100% guarantee, please visit [www.novusbio.com/guarantee](http://www.novusbio.com/guarantee)

Earn gift cards/discounts by submitting a review: [www.novusbio.com/reviews/submit/NBP1-47822](http://www.novusbio.com/reviews/submit/NBP1-47822)

Earn gift cards/discounts by submitting a publication using this product:  
[www.novusbio.com/publications](http://www.novusbio.com/publications)

