

# Product Datasheet

## Cytokeratin 18 Antibody (OT1E1) NBP1-47817

Unit Size: 0.1 ml

Store at -20C. Avoid freeze-thaw cycles.

[www.novusbio.com](http://www.novusbio.com)



[technical@novusbio.com](mailto:technical@novusbio.com)

Protocols, Publications, Related Products, Reviews, Research Tools and Images at:  
[www.novusbio.com/NBP1-47817](http://www.novusbio.com/NBP1-47817)

Updated 10/23/2024 v.20.1

Earn rewards for product  
reviews and publications.

Submit a publication at [www.novusbio.com/publications](http://www.novusbio.com/publications)

Submit a review at [www.novusbio.com/reviews/destination/NBP1-47817](http://www.novusbio.com/reviews/destination/NBP1-47817)



**NBP1-47817****Cytokeratin 18 Antibody (OT1E1)**

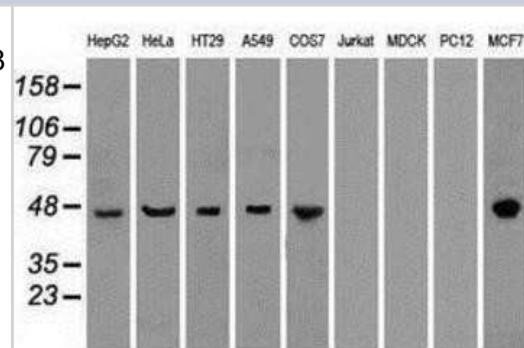
<b>Product Information</b>	
<b>Unit Size</b>	0.1 ml
<b>Concentration</b>	1 mg/ml
<b>Storage</b>	Store at -20C. Avoid freeze-thaw cycles.
<b>Clonality</b>	Monoclonal
<b>Clone</b>	OT1E1
<b>Preservative</b>	0.02% Sodium Azide
<b>Isotype</b>	IgG1
<b>Purity</b>	Immunogen affinity purified
<b>Buffer</b>	PBS (pH 7.3), 1.0% BSA and 50% Glycerol
<b>Target Molecular Weight</b>	47.9 kDa

<b>Product Description</b>	
<b>Host</b>	Mouse
<b>Gene ID</b>	3875
<b>Gene Symbol</b>	KRT18
<b>Species</b>	Human, Mouse, Rat, Monkey
<b>Reactivity Notes</b>	Please note that this antibody is reactive to Mouse and derived from the same host, Mouse. Mouse-On-Mouse blocking reagent may be needed for IHC and ICC experiments to reduce high background signal. You can find these reagents under catalog numbers PK-2200-NB and MP-2400-NB. Please contact Technical Support if you have any questions.
<b>Marker</b>	Epithelial Marker
<b>Specificity/Sensitivity</b>	This antibody is specific for Homo sapiens keratin 18 (KRT18), transcript variant 2.
<b>Immunogen</b>	Human recombinant protein fragment corresponding to amino acids 69-372 of human CK18 (NP_000215) produced in E.coli.

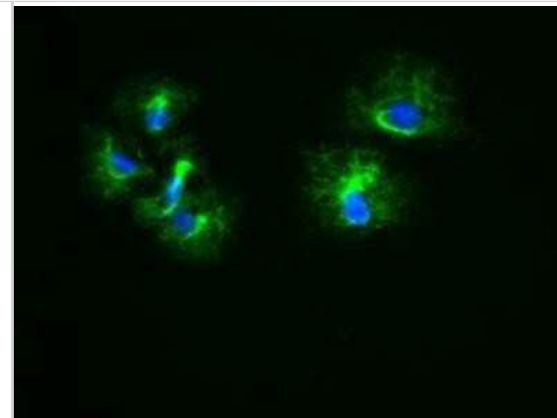
<b>Product Application Details</b>	
<b>Applications</b>	Western Blot, Immunocytochemistry/ Immunofluorescence, Immunohistochemistry, Immunohistochemistry-Paraffin
<b>Recommended Dilutions</b>	Western Blot 1:500-1000, Immunohistochemistry 1:50, Immunocytochemistry/ Immunofluorescence 1:100, Immunohistochemistry-Paraffin 1:50

**Images**

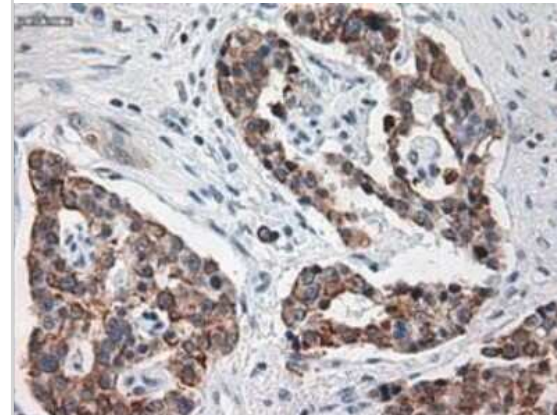
Western Blot: Cytokeratin 18 Antibody (OT1E1) [NBP1-47817] - Analysis of extracts (35ug) from 9 different cell lines by using anti-KRT18 monoclonal antibody.



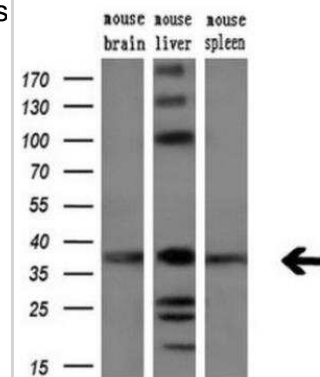
Immunocytochemistry/Immunofluorescence: Cytokeratin 18 Antibody (OT1E1) [NBP1-47817] - Staining of COS7 cells transiently transfected by pCMV6-ENTRY KRT18.



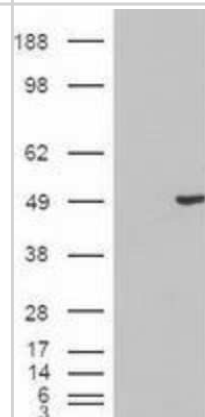
Immunohistochemistry-Paraffin: Cytokeratin 18 Antibody (OT1E1) [NBP1-47817] - Staining of paraffin-embedded Human pancreas tissue using anti-KRT18 mouse monoclonal antibody.



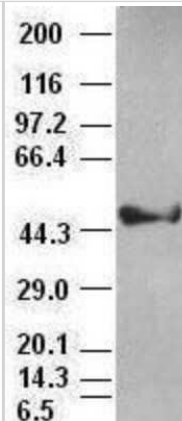
Western Blot: Cytokeratin 18 Antibody (OT1E1) [NBP1-47817] - Extracts (10ug) from 10 Human tissue by using Cytokeratin 18 monoclonal antibody at 1:200 (1: Testis; 2: Omentum; 3: Uterus; 4: Breast; 5: Brain; 6: Liver; 7: Ovary; 8: Thyroid gland; 9: colon; 10: spleen).



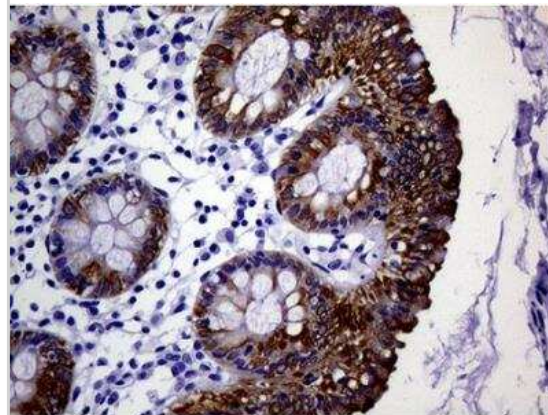
Western Blot: Cytokeratin 18 Antibody (OT1E1) [NBP1-47817] - Cytokeratin 18 antibody (1E1) at 1:1000 dilution with HepG2 cell lysate



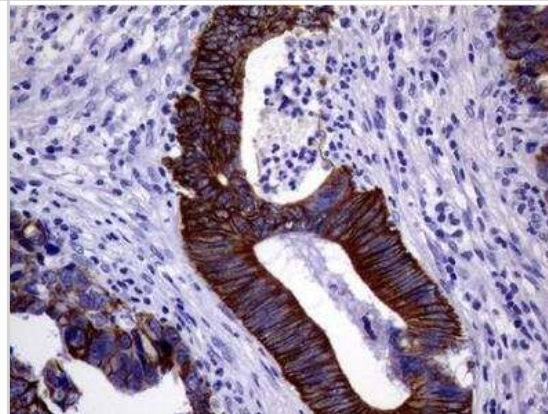
Western Blot: Cytokeratin 18 Antibody (OTI1E1) [NBP1-47817] - HEK293T cells were transfected with the pCMV6-ENTRY control (Left lane) or pCMV6-ENTRY KRT18 (Right lane) cDNA for 48 hrs and lysed. Equivalent amounts of cell lysates (5 ug per lane) were separated by SDS-PAGE and immunoblotted with anti-KRT18.



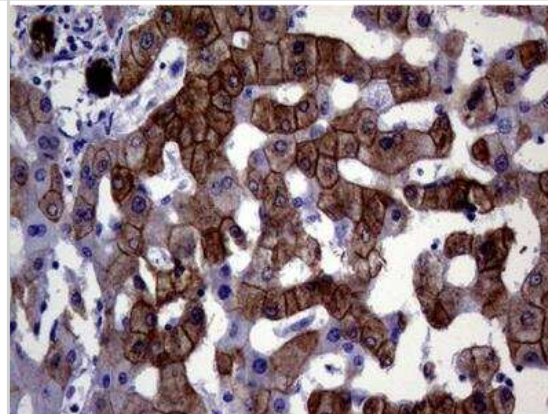
Immunohistochemistry-Paraffin: Cytokeratin 18 Antibody (OTI1E1) [NBP1-47817] - Staining of paraffin-embedded Human colon tissue within the normal limits. Heat-induced epitope retrieval by 10mM citric buffer, pH6.0, 100C for 10min.



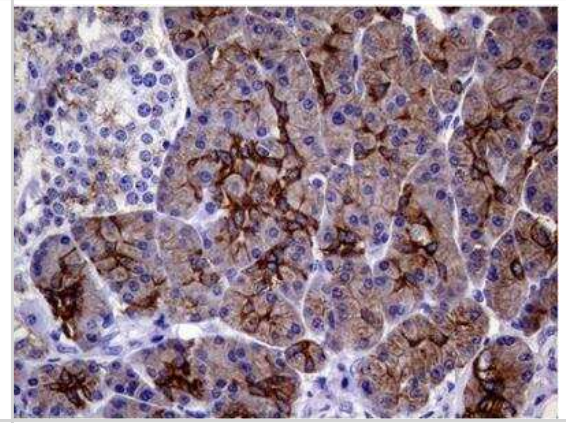
Immunohistochemistry-Paraffin: Cytokeratin 18 Antibody (OTI1E1) [NBP1-47817] - Staining of paraffin-embedded Adenocarcinoma of Human colon tissue. Heat-induced epitope retrieval by 10mM citric buffer, pH6.0, 100C for 10min.



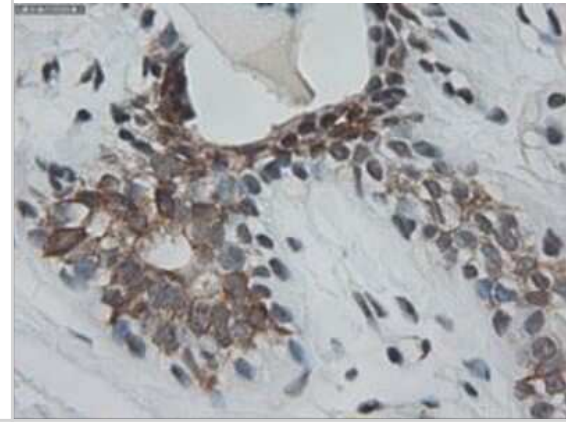
Immunohistochemistry-Paraffin: Cytokeratin 18 Antibody (OTI1E1) [NBP1-47817] - Staining of paraffin-embedded Human liver tissue within the normal limits. Heat-induced epitope retrieval by 1mM EDTA in 10mM Tris buffer (pH8.0) at 120C for 3 min, (1:6000).



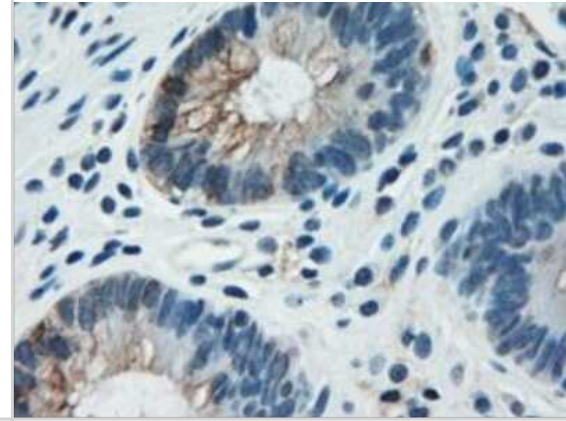
Immunohistochemistry-Paraffin: Cytokeratin 18 Antibody (OTI1E1) [NBP1-47817] - Staining of paraffin-embedded Human pancreas tissue within the normal limits. Heat-induced epitope retrieval by 10mM citric buffer, pH6.0, 100C for 10min.



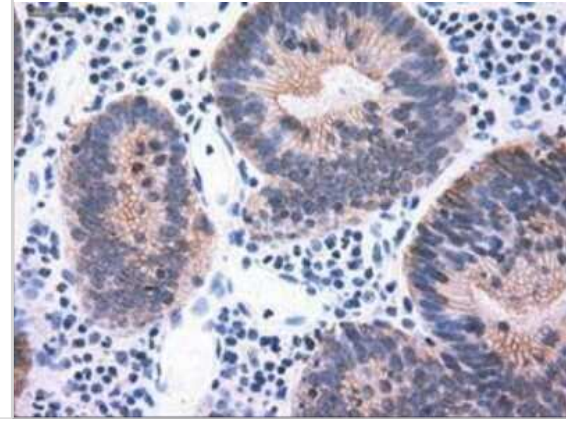
Immunohistochemistry-Paraffin: Cytokeratin 18 Antibody (OTI1E1) [NBP1-47817] - Staining of paraffin-embedded Adenocarcinoma of Human colon tissue using anti-KRT18 mouse monoclonal antibody.



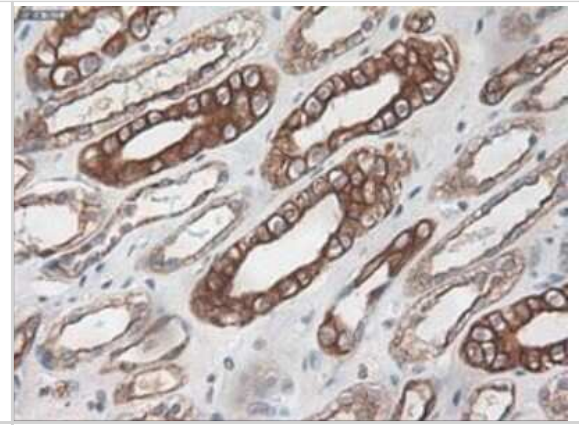
Immunohistochemistry-Paraffin: Cytokeratin 18 Antibody (OTI1E1) [NBP1-47817] - Staining of paraffin-embedded Carcinoma of Human kidney tissue using anti-KRT18 mouse monoclonal antibody.



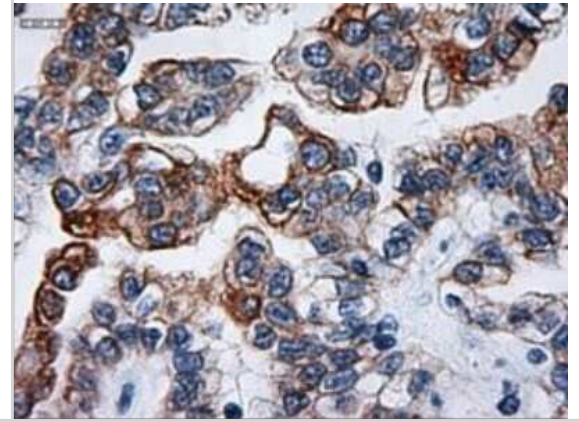
Immunohistochemistry-Paraffin: Cytokeratin 18 Antibody (OTI1E1) [NBP1-47817] - Staining of paraffin-embedded Carcinoma of Human liver tissue using anti-KRT18 mouse monoclonal antibody.



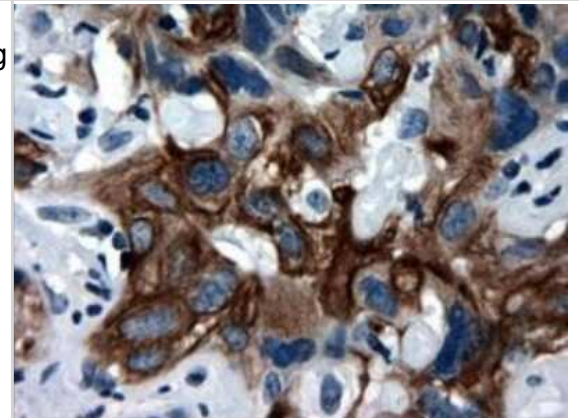
Immunohistochemistry-Paraffin: Cytokeratin 18 Antibody (OTI1E1) [NBP1-47817] - Staining of paraffin-embedded Carcinoma of Human pancreas tissue using anti-KRT18 mouse monoclonal antibody.



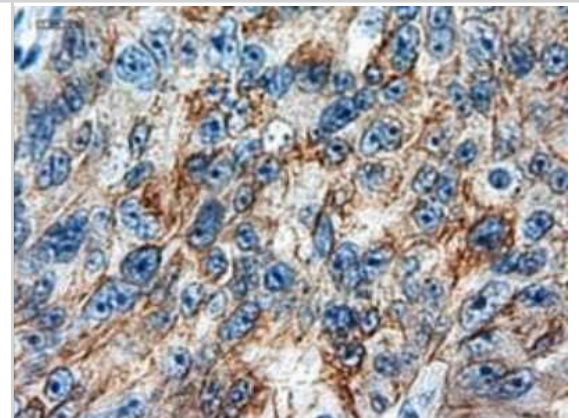
Immunohistochemistry-Paraffin: Cytokeratin 18 Antibody (OTI1E1) [NBP1-47817] - Staining of paraffin-embedded Human breast tissue using anti-KRT18 mouse monoclonal antibody.



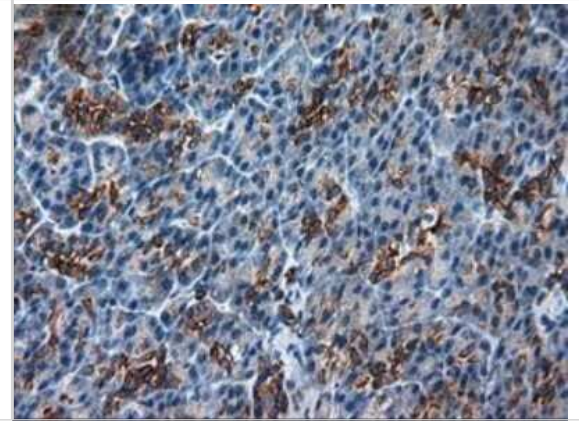
Immunohistochemistry-Paraffin: Cytokeratin 18 Antibody (OTI1E1) [NBP1-47817] - Staining of paraffin-embedded Human colon tissue using anti-KRT18 mouse monoclonal antibody.



Immunohistochemistry-Paraffin: Cytokeratin 18 Antibody (OTI1E1) [NBP1-47817] - Staining of paraffin-embedded Human endometrium tissue using anti-KRT18 mouse monoclonal antibody.



Immunohistochemistry-Paraffin: Cytokeratin 18 Antibody (OT1E1) [NBP1-47817] - Staining of paraffin-embedded Human Kidney tissue using anti-KRT18 mouse monoclonal antibody.





### **Novus Biologicals USA**

10730 E. Briarwood Avenue  
Centennial, CO 80112  
USA  
Phone: 303.730.1950  
Toll Free: 1.888.506.6887  
Fax: 303.730.1966  
nb-customerservice@bio-techne.com

### **Bio-Techne Canada**

21 Canmotor Ave  
Toronto, ON M8Z 4E6  
Canada  
Phone: 905.827.6400  
Toll Free: 855.668.8722  
Fax: 905.827.6402  
canada.inquires@bio-techne.com

### **Bio-Techne Ltd**

19 Barton Lane  
Abingdon Science Park  
Abingdon, OX14 3NB, United Kingdom  
Phone: (44) (0) 1235 529449  
Free Phone: 0800 37 34 15  
Fax: (44) (0) 1235 533420  
info.EMEA@bio-techne.com

### **General Contact Information**

www.novusbio.com  
Technical Support: nb-technical@bio-techne.com  
Orders: nb-customerservice@bio-techne.com  
General: novus@novusbio.com

### **Products Related to NBP1-47817**

---

HAF007	Goat anti-Mouse IgG Secondary Antibody [HRP]
NB720-B	Rabbit anti-Mouse IgG (H+L) Secondary Antibody [Biotin]
NBP1-97005-0.5mg	Mouse IgG1 Isotype Control (MG1)
H00003875-P02-10ug	Recombinant Human Cytokeratin 18 GST (N-Term) Protein

---

### **Limitations**

This product is for research use only and is not approved for use in humans or in clinical diagnosis. Primary Antibodies are guaranteed for 1 year from date of receipt.

For more information on our 100% guarantee, please visit [www.novusbio.com/guarantee](http://www.novusbio.com/guarantee)

Earn gift cards/discounts by submitting a review: [www.novusbio.com/reviews/submit/NBP1-47817](http://www.novusbio.com/reviews/submit/NBP1-47817)

Earn gift cards/discounts by submitting a publication using this product:  
[www.novusbio.com/publications](http://www.novusbio.com/publications)

