

Product Datasheet

ERCC1 Antibody (OTI1A3)

NBP1-47733

Unit Size: 0.1 ml

Store at -20C. Avoid freeze-thaw cycles.

www.novusbio.com



technical@novusbio.com

Protocols, Publications, Related Products, Reviews, Research Tools and Images at:
www.novusbio.com/NBP1-47733

Updated 10/23/2024 v.20.1

Earn rewards for product
reviews and publications.

Submit a publication at www.novusbio.com/publications

Submit a review at www.novusbio.com/reviews/destination/NBP1-47733



NBP1-47733

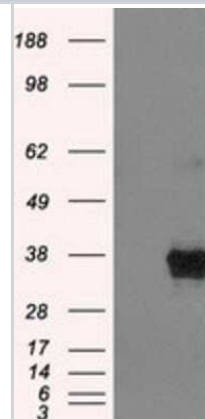
ERCC1 Antibody (OTI1A3)

Product Information	
Unit Size	0.1 ml
Concentration	0.55 mg/ml
Storage	Store at -20C. Avoid freeze-thaw cycles.
Clonality	Monoclonal
Clone	OTI1A3
Preservative	0.02% Sodium Azide
Isotype	IgG1
Purity	Immunogen affinity purified
Buffer	PBS (pH 7.3), 1.0% BSA and 50% Glycerol
Target Molecular Weight	32.6 kDa
Product Description	
Host	Mouse
Gene ID	2067
Gene Symbol	ERCC1
Species	Human, Mouse
Reactivity Notes	Please note that this antibody is reactive to Mouse and derived from the same host, Mouse. Mouse-On-Mouse blocking reagent may be needed for IHC and ICC experiments to reduce high background signal. You can find these reagents under catalog numbers PK-2200-NB and MP-2400-NB. Please contact Technical Support if you have any questions.
Specificity/Sensitivity	This antibody is specific for Homo sapiens excision repair cross-complementing rodent repair deficiency, complementation group 1 (includes overlapping antisense sequence) (ERCC1), transcript variant 2.
Immunogen	Full-length protein expressed in 293T cell transfected with human ERCC1 expression vector
Product Application Details	
Applications	Western Blot, Flow Cytometry, Immunocytochemistry/ Immunofluorescence, Immunohistochemistry, Immunohistochemistry-Paraffin
Recommended Dilutions	Western Blot 1:2000, Flow Cytometry 1:100, Immunohistochemistry 1:50, Immunocytochemistry/ Immunofluorescence 1:100, Immunohistochemistry-Paraffin 1:50

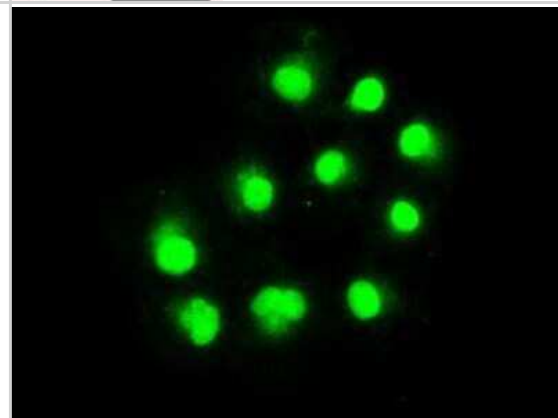


Images

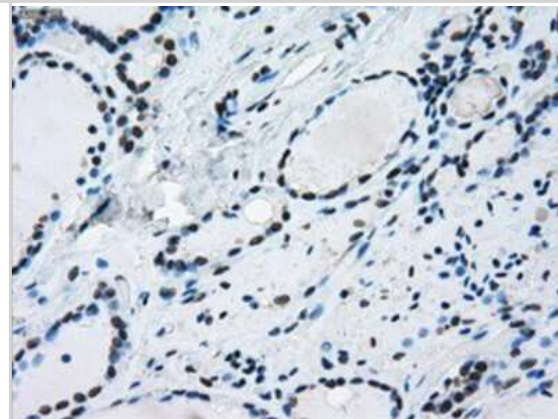
Western Blot: ERCC1 Antibody (1A3) [NBP1-47733] - HEK293T cells were transfected with the pCMV6-ENTRY control (Left lane) or pCMV6-ENTRY ERCC1(Right lane) cDNA for 48 hrs and lysed. Equivalent amounts of cell lysates (5 ug per lane) were separated by SDS-PAGE and immunoblotted with anti-ERCC1.



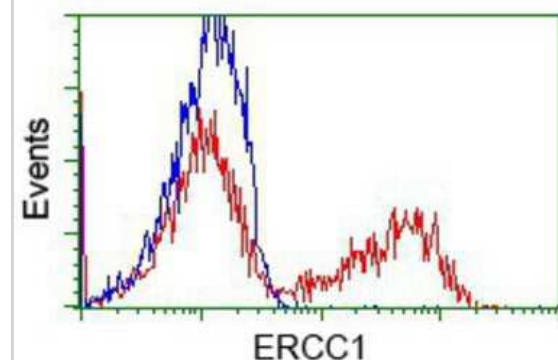
Immunocytochemistry/Immunofluorescence: ERCC1 Antibody (1A3) [NBP1-47733] Staining of COS7 cells transiently transfected by pCMV6-ENTRY ERCC1.



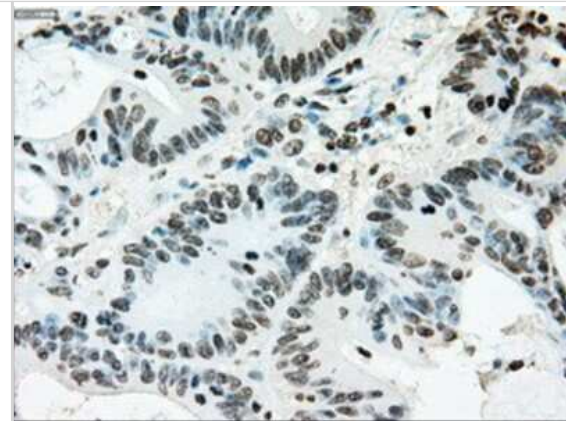
Immunohistochemistry-Paraffin: ERCC1 Antibody (1A3) [NBP1-47733] - Staining of paraffin-embedded thyroid tissue using anti-ERCC1 mouse monoclonal antibody.



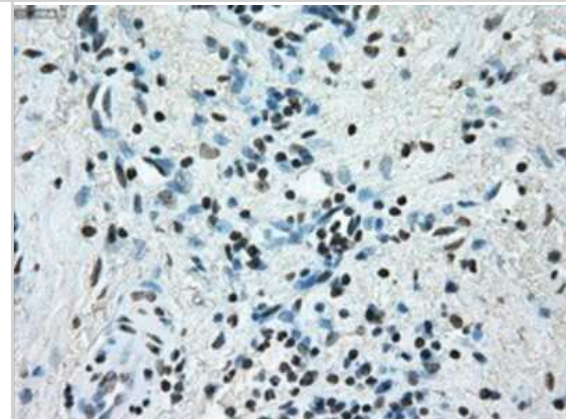
Flow Cytometry: ERCC1 Antibody (1A3) [NBP1-47733] - HEK293T cells transfected with either pCMV6-ENTRY ERCC1.(Red) or empty vector control plasmid (Blue) were immunostained with anti-ERCC1 mouse monoclonal, and then analyzed by flow cytometry.



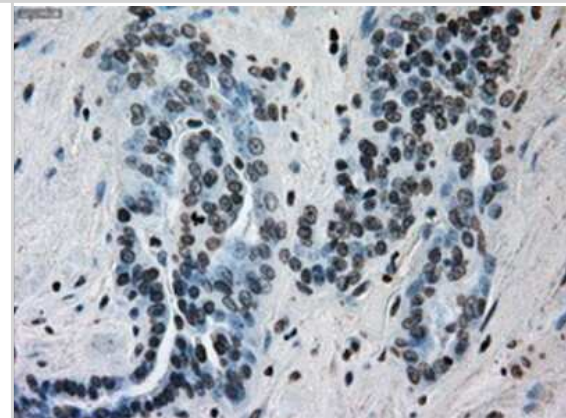
Immunohistochemistry-Paraffin: ERCC1 Antibody (1A3) [NBP1-47733] - Staining of paraffin-embedded Adenocarcinoma of colon tissue using anti-ERCC1 mouse monoclonal antibody.



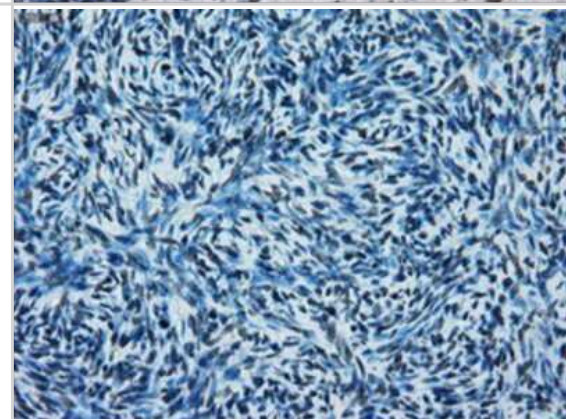
Immunohistochemistry-Paraffin: ERCC1 Antibody (1A3) [NBP1-47733] - Staining of paraffin-embedded Adenocarcinoma of endometrium tissue using anti-ERCC1 mouse monoclonal antibody.



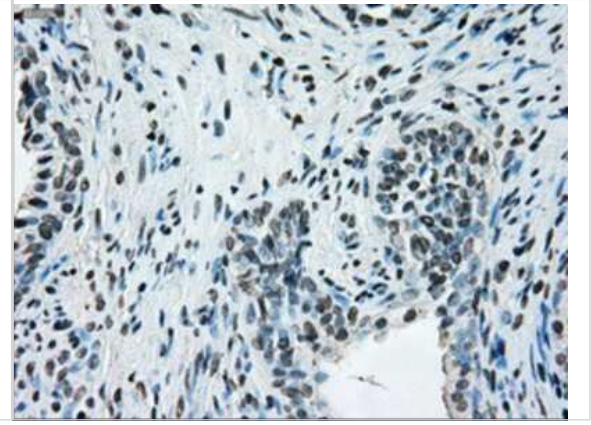
Immunohistochemistry-Paraffin: ERCC1 Antibody (1A3) [NBP1-47733] - Staining of paraffin-embedded Adenocarcinoma of ovary tissue using anti-ERCC1 mouse monoclonal antibody.



Immunohistochemistry-Paraffin: ERCC1 Antibody (1A3) [NBP1-47733] - Staining of paraffin-embedded Ovary tissue using anti-ERCC1 mouse monoclonal antibody.



Immunohistochemistry-Paraffin: ERCC1 Antibody (1A3) [NBP1-47733] - Staining of paraffin-embedded prostate tissue using anti-ERCC1 mouse monoclonal antibody.





Novus Biologicals USA

10730 E. Briarwood Avenue
Centennial, CO 80112
USA
Phone: 303.730.1950
Toll Free: 1.888.506.6887
Fax: 303.730.1966
nb-customerservice@bio-techne.com

Bio-Techne Canada

21 Canmotor Ave
Toronto, ON M8Z 4E6
Canada
Phone: 905.827.6400
Toll Free: 855.668.8722
Fax: 905.827.6402
canada.inquires@bio-techne.com

Bio-Techne Ltd

19 Barton Lane
Abingdon Science Park
Abingdon, OX14 3NB, United Kingdom
Phone: (44) (0) 1235 529449
Free Phone: 0800 37 34 15
Fax: (44) (0) 1235 533420
info.EMEA@bio-techne.com

General Contact Information

www.novusbio.com
Technical Support: nb-technical@bio-techne.com
Orders: nb-customerservice@bio-techne.com
General: novus@novusbio.com

Products Related to NBP1-47733

HAF007	Goat anti-Mouse IgG Secondary Antibody [HRP]
NB720-B	Rabbit anti-Mouse IgG (H+L) Secondary Antibody [Biotin]
NBP1-97005-0.5mg	Mouse IgG1 Isotype Control (MG1)
NBP1-98981-50ug	Recombinant Human ERCC1 His Protein

Limitations

This product is for research use only and is not approved for use in humans or in clinical diagnosis. Primary Antibodies are guaranteed for 1 year from date of receipt.

For more information on our 100% guarantee, please visit www.novusbio.com/guarantee

Earn gift cards/discounts by submitting a review: www.novusbio.com/reviews/submit/NBP1-47733

Earn gift cards/discounts by submitting a publication using this product:
www.novusbio.com/publications

