

Product Datasheet

Carboxypeptidase A1/CPA1 Antibody (OTI2A3) NBP1-47704

Unit Size: 0.1 ml

Store at -20C. Avoid freeze-thaw cycles.

www.novusbio.com



technical@novusbio.com

Reviews: 1 Publications: 1

Protocols, Publications, Related Products, Reviews, Research Tools and Images at:
www.novusbio.com/NBP1-47704

Updated 10/23/2024 v.20.1

**Earn rewards for product
reviews and publications.**

Submit a publication at www.novusbio.com/publications

Submit a review at www.novusbio.com/reviews/destination/NBP1-47704



NBP1-47704**Carboxypeptidase A1/CPA1 Antibody (OTI2A3)****Product Information**

| | |
|--------------------------------|--|
| Unit Size | 0.1 ml |
| Concentration | 1 mg/ml |
| Storage | Store at -20C. Avoid freeze-thaw cycles. |
| Clonality | Monoclonal |
| Clone | OTI2A3 |
| Preservative | 0.02% Sodium Azide |
| Isotype | IgG2a |
| Purity | Immunogen affinity purified |
| Buffer | PBS (pH 7.3), 1.0% BSA and 50% Glycerol |
| Target Molecular Weight | 45.5 kDa |

Product Description

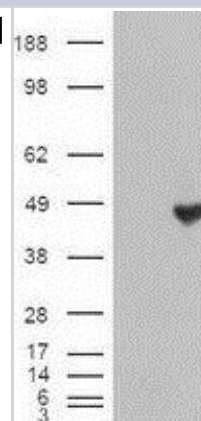
| | |
|--------------------------------|---|
| Host | Mouse |
| Gene ID | 1357 |
| Gene Symbol | CPA1 |
| Species | Human |
| Specificity/Sensitivity | This antibody is specific for Homo sapiens carboxypeptidase A1 (pancreatic) (CPA1). |
| Immunogen | Recombinant protein expressed in E.coli corresponding to amino acids 1-419 of human CPA-1 |

Product Application Details

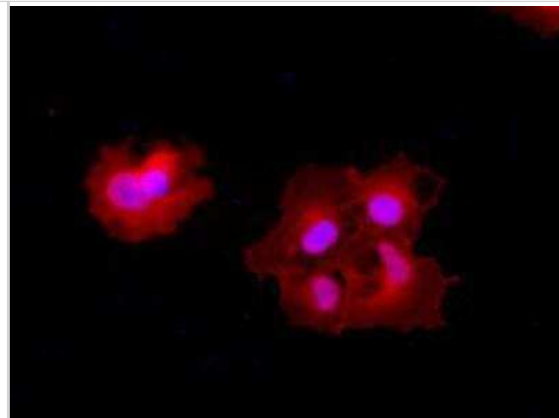
| | |
|------------------------------|---|
| Applications | Western Blot, Immunocytochemistry/ Immunofluorescence, Immunohistochemistry, Immunohistochemistry-Paraffin |
| Recommended Dilutions | Western Blot 1:1000, Immunohistochemistry 1:50, Immunocytochemistry/ Immunofluorescence 1:100, Immunohistochemistry-Paraffin 1:50 |

Images

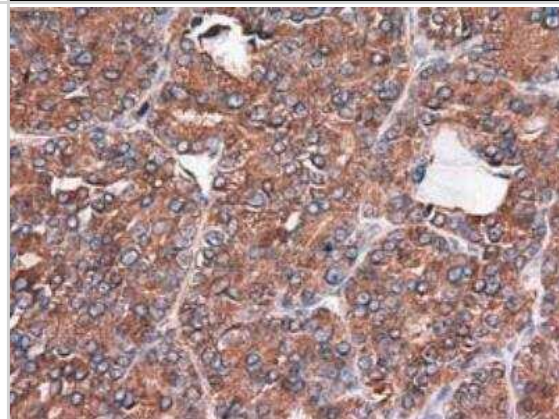
Western Blot: Carboxypeptidase A1/CPA1 Antibody (2A3) [NBP1-47704]
 - HEK293T cells were transfected with the pCMV6-ENTRY control (Left lane) or pCMV6-ENTRY Carboxypeptidase A(Right lane) cDNA for 48 hrs and lysed. Equivalent amounts of cell lysates (5 ug per lane) were separated by SDS-PAGE and immunoblotted with anti-Carboxypeptidase A.



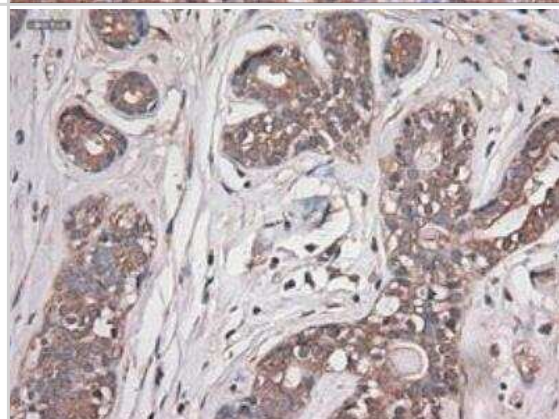
Immunocytochemistry/Immunofluorescence: Carboxypeptidase A1/CPA1 Antibody (2A3) [NBP1-47704] - Staining (Red) of COS7 cells transiently transfected by pCMV6-ENTRY Carboxypeptidase A.



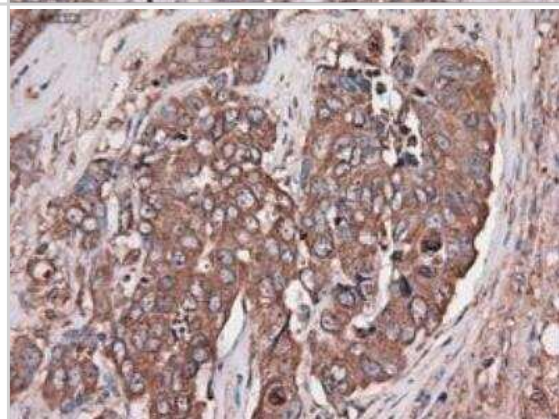
Immunohistochemistry-Paraffin: Carboxypeptidase A1/CPA1 Antibody (2A3) [NBP1-47704] - Staining of paraffin-embedded liver using anti-Carboxypeptidase A mouse monoclonal antibody.



Immunohistochemistry-Paraffin: Carboxypeptidase A1/CPA1 Antibody (2A3) [NBP1-47704] - Staining of paraffin-embedded Adenocarcinoma of breast using anti-Carboxypeptidase A mouse monoclonal antibody.



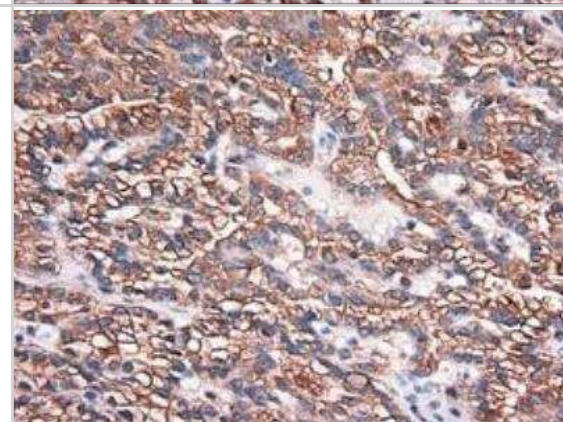
Immunohistochemistry-Paraffin: Carboxypeptidase A1/CPA1 Antibody (2A3) [NBP1-47704] - Staining of paraffin-embedded Adenocarcinoma of ovary using anti-Carboxypeptidase A mouse monoclonal antibody.



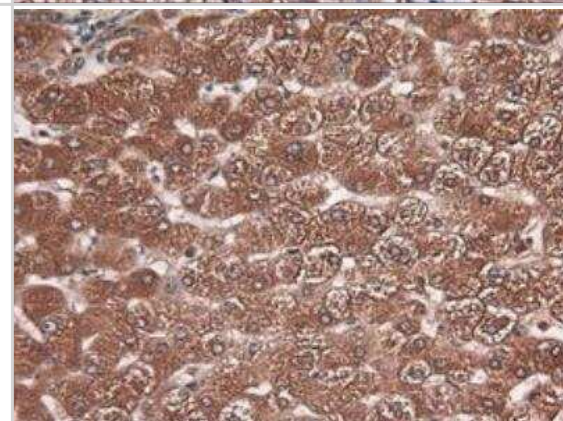
Immunohistochemistry-Paraffin: Carboxypeptidase A1/CPA1 Antibody (2A3) [NBP1-47704] - Staining of paraffin-embedded breast using anti-Carboxypeptidase A mouse monoclonal antibody.



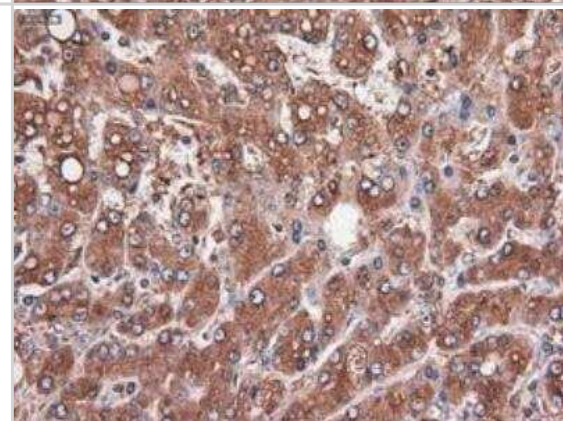
Immunohistochemistry-Paraffin: Carboxypeptidase A1/CPA1 Antibody (2A3) [NBP1-47704] - Staining of paraffin-embedded Carcinoma of kidney using anti-Carboxypeptidase A mouse monoclonal antibody.



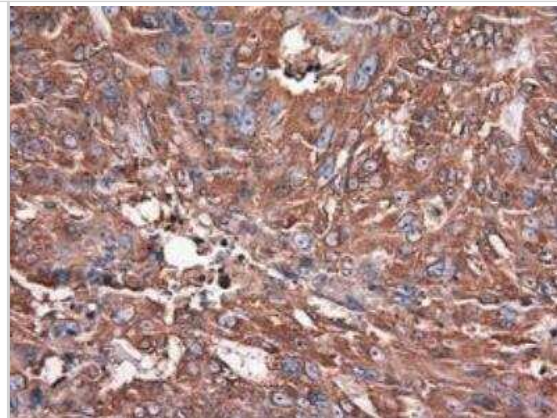
Immunohistochemistry-Paraffin: Carboxypeptidase A1/CPA1 Antibody (2A3) [NBP1-47704] - Staining of paraffin-embedded Carcinoma of liver using anti-Carboxypeptidase A mouse monoclonal antibody.



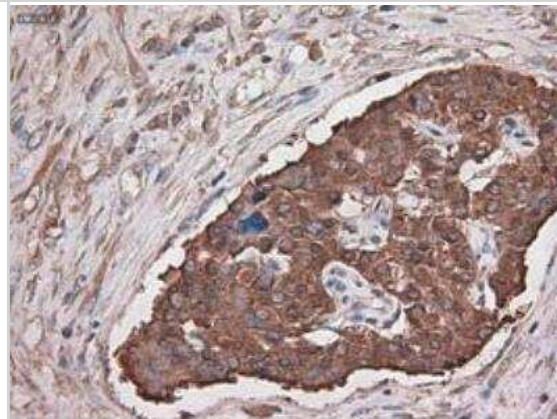
Immunohistochemistry-Paraffin: Carboxypeptidase A1/CPA1 Antibody (2A3) [NBP1-47704] - Staining of paraffin-embedded Carcinoma of pancreas using anti-Carboxypeptidase A mouse monoclonal antibody.



Immunohistochemistry-Paraffin: Carboxypeptidase A1/CPA1 Antibody (2A3) [NBP1-47704] - Staining of paraffin-embedded endometrium using anti-Carboxypeptidase A mouse monoclonal antibody.



Immunohistochemistry-Paraffin: Carboxypeptidase A1/CPA1 Antibody (2A3) [NBP1-47704] - Staining of paraffin-embedded kidney using anti-Carboxypeptidase A mouse monoclonal antibody.



Publications

Villani V, Thornton ME, Zook HN et al. SOX9+/PTF1A+ Cells Define the Tip Progenitor Cells of the Human Fetal Pancreas of the Second Trimester Stem Cells Transl Med 2019-10-21 [PMID: 31631582] (IF/IHC, Human)



Novus Biologicals USA

10730 E. Briarwood Avenue
Centennial, CO 80112
USA
Phone: 303.730.1950
Toll Free: 1.888.506.6887
Fax: 303.730.1966
nb-customerservice@bio-techne.com

Bio-Techne Canada

21 Canmotor Ave
Toronto, ON M8Z 4E6
Canada
Phone: 905.827.6400
Toll Free: 855.668.8722
Fax: 905.827.6402
canada.inquires@bio-techne.com

Bio-Techne Ltd

19 Barton Lane
Abingdon Science Park
Abingdon, OX14 3NB, United Kingdom
Phone: (44) (0) 1235 529449
Free Phone: 0800 37 34 15
Fax: (44) (0) 1235 533420
info.EMEA@bio-techne.com

General Contact Information

www.novusbio.com
Technical Support: nb-technical@bio-
techne.com
Orders: nb-customerservice@bio-techne.com
General: novus@novusbio.com

Products Related to NBP1-47704

| | |
|---------------|---|
| HAF007 | Goat anti-Mouse IgG Secondary Antibody [HRP] |
| NB720-B | Rabbit anti-Mouse IgG (H+L) Secondary Antibody [Biotin] |
| NBP1-96778 | Mouse IgG2a Isotype Control (M2A) |
| NBP1-88056PEP | Carboxypeptidase A1/CPA1 Recombinant Protein Antigen |

Limitations

This product is for research use only and is not approved for use in humans or in clinical diagnosis. Primary Antibodies are guaranteed for 1 year from date of receipt.

For more information on our 100% guarantee, please visit www.novusbio.com/guarantee

Earn gift cards/discounts by submitting a review: www.novusbio.com/reviews/submit/NBP1-47704

Earn gift cards/discounts by submitting a publication using this product:
www.novusbio.com/publications

