

Product Datasheet

Bcl-xL Antibody (OTI4A9)

NBP1-47665

Unit Size: 0.1 ml

Store at -20C. Avoid freeze-thaw cycles.

www.novusbio.com



technical@novusbio.com

Protocols, Publications, Related Products, Reviews, Research Tools and Images at:
www.novusbio.com/NBP1-47665

Updated 10/23/2024 v.20.1

Earn rewards for product
reviews and publications.

Submit a publication at www.novusbio.com/publications

Submit a review at www.novusbio.com/reviews/destination/NBP1-47665



NBP1-47665

Bcl-xL Antibody (OTI4A9)

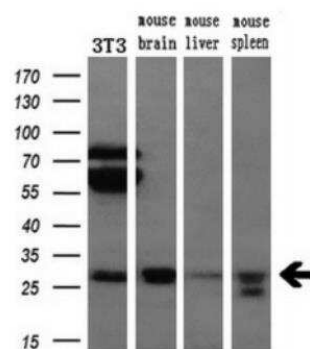
Product Information	
Unit Size	0.1 ml
Concentration	0.25 mg/ml
Storage	Store at -20C. Avoid freeze-thaw cycles.
Clonality	Monoclonal
Clone	OTI4A9
Preservative	0.02% Sodium Azide
Isotype	IgG2a
Purity	Immunogen affinity purified
Buffer	PBS (pH 7.3), 1.0% BSA, 50% Glycerol
Target Molecular Weight	25.9 kDa

Product Description	
Host	Mouse
Gene ID	598
Gene Symbol	BCL2L1
Species	Human, Mouse, Rat
Reactivity Notes	Please note that this antibody is reactive to Mouse and derived from the same host, Mouse. Mouse-On-Mouse blocking reagent may be needed for IHC and ICC experiments to reduce high background signal. You can find these reagents under catalog numbers PK-2200-NB and MP-2400-NB. Please contact Technical Support if you have any questions.
Specificity/Sensitivity	This antibody is specific for Homo sapiens BCL2-like 1 (BCL2L1), nuclear gene encoding mitochondrial protein, transcript variant 1.
Immunogen	Recombinant fragment expressed in E.coli corresponding to amino acids 1-212 of human Bcl-XL

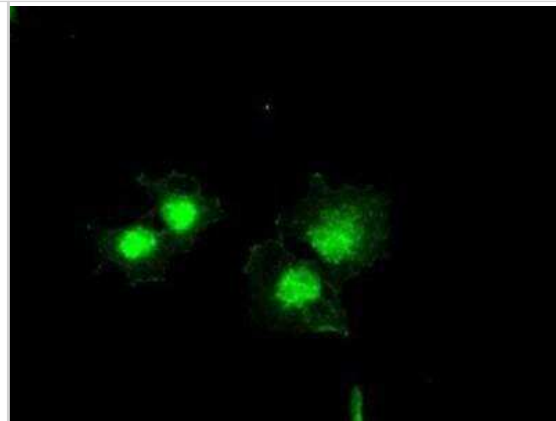
Product Application Details	
Applications	Western Blot, Immunocytochemistry/ Immunofluorescence, Immunohistochemistry, Immunohistochemistry-Paraffin
Recommended Dilutions	Western Blot 1:200 - 1:1000, Immunohistochemistry 1:150, Immunocytochemistry/ Immunofluorescence 1:1000, Immunohistochemistry-Paraffin 1:150

Images

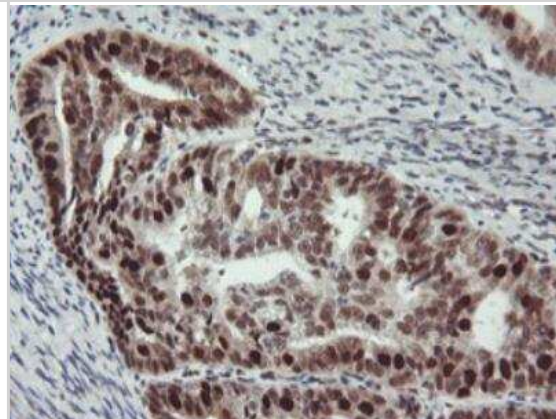
Western Blot: Bcl-xL Antibody (4A9) [NBP1-47665] - Analysis of extracts (10ug) from a mouse cell line and 3 different mouse tissues by using antiBCL-XL monoclonal antibody.(1:200)



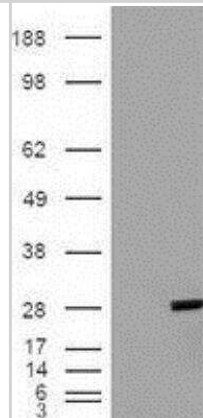
Immunocytochemistry/Immunofluorescence: Bcl-XI Antibody (4A9) [NBP1-47665] - Bcl-XI Antibody (4A9) Staining of COS7 cells transiently transfected by pCMV6-ENTRY BCL2L1.



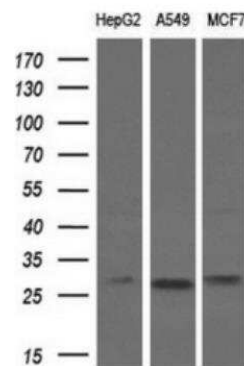
Immunohistochemistry-Paraffin: Bcl-xL Antibody (4A9) [NBP1-47665] - Staining of paraffin-embedded Adenocarcinoma of Human endometrium tissue using anti-BCL-XL mouse monoclonal antibody.



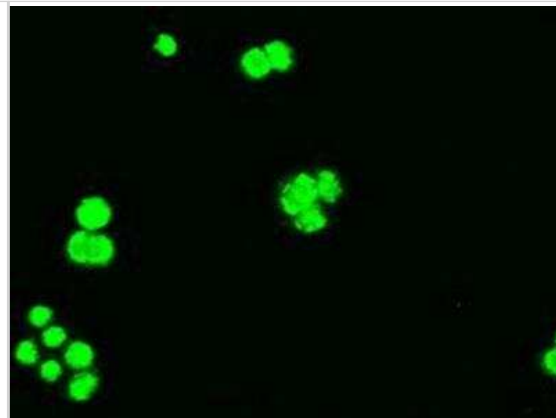
Western Blot: Bcl-XI Antibody (4A9) [NBP1-47665] - Bcl-XI Antibody (4A9) HEK293T cells were transfected with the pCMV6-ENTRY control (Left lane) or pCMV6-ENTRY BCL2L1(Right lane) cDNA for 48 hrs and lysed. Equivalent amounts of cell lysates (5 ug per lane) were separated by SDS-PAGE and immunoblotted with anti-BCL2L1.



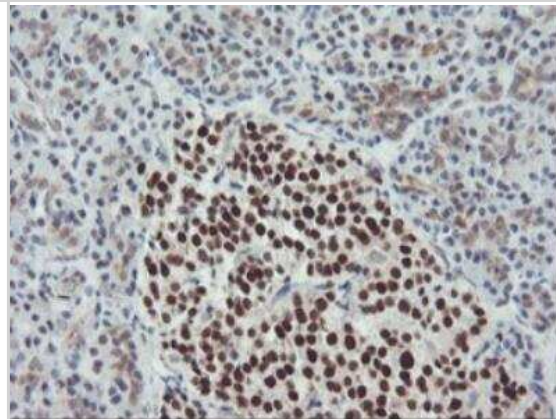
Western Blot: Bcl-xL Antibody (4A9) [NBP1-47665] - Analysis of extracts (10ug) from 3 different cell lines by using anti-BCL-XL monoclonal antibody.(1:200)



Immunocytochemistry/Immunofluorescence: Bcl-XI Antibody (4A9) [NBP1-47665] - Bcl-XI Antibody (4A9) Immunofluorescent staining of HT29 cells using anti-BCL2L1 mouse monoclonal antibody.



Immunohistochemistry-Paraffin: Bcl-xL Antibody (4A9) [NBP1-47665] - Staining of paraffin-embedded Human pancreas tissue within the normal limits using anti-BCL-XL mouse monoclonal antibody.





Novus Biologicals USA

10730 E. Briarwood Avenue
Centennial, CO 80112
USA
Phone: 303.730.1950
Toll Free: 1.888.506.6887
Fax: 303.730.1966
nb-customerservice@bio-techne.com

Bio-Techne Canada

21 Canmotor Ave
Toronto, ON M8Z 4E6
Canada
Phone: 905.827.6400
Toll Free: 855.668.8722
Fax: 905.827.6402
canada.inquires@bio-techne.com

Bio-Techne Ltd

19 Barton Lane
Abingdon Science Park
Abingdon, OX14 3NB, United Kingdom
Phone: (44) (0) 1235 529449
Free Phone: 0800 37 34 15
Fax: (44) (0) 1235 533420
info.EMEA@bio-techne.com

General Contact Information

www.novusbio.com
Technical Support: nb-technical@bio-techne.com
Orders: nb-customerservice@bio-techne.com
General: novus@novusbio.com

Products Related to NBP1-47665

HAF007	Goat anti-Mouse IgG Secondary Antibody [HRP]
NB720-B	Rabbit anti-Mouse IgG (H+L) Secondary Antibody [Biotin]
NBP1-96778	Mouse IgG2a Isotype Control (M2A)
NBP2-34899-100ug	Recombinant Human Bcl-xL Protein

Limitations

This product is for research use only and is not approved for use in humans or in clinical diagnosis. Primary Antibodies are guaranteed for 1 year from date of receipt.

For more information on our 100% guarantee, please visit www.novusbio.com/guarantee

Earn gift cards/discounts by submitting a review: www.novusbio.com/reviews/submit/NBP1-47665

Earn gift cards/discounts by submitting a publication using this product:
www.novusbio.com/publications

