

Product Datasheet

Pancreatic Amylase Alpha Antibody (OTI6D4) NBP1-47659

Unit Size: 0.1 ml

Store at -20C. Avoid freeze-thaw cycles.

www.novusbio.com



technical@novusbio.com

Reviews: 1

Protocols, Publications, Related Products, Reviews, Research Tools and Images at:
www.novusbio.com/NBP1-47659

Updated 3/17/2025 v.20.1

Earn rewards for product
reviews and publications.

Submit a publication at www.novusbio.com/publications

Submit a review at www.novusbio.com/reviews/destination/NBP1-47659



NBP1-47659**Pancreatic Amylase Alpha Antibody (OTI6D4)**

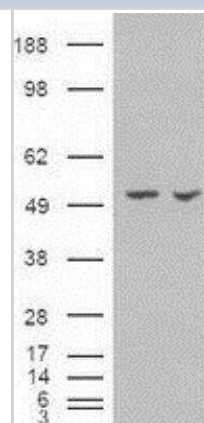
Product Information	
Unit Size	0.1 ml
Concentration	0.2 mg/ml
Storage	Store at -20C. Avoid freeze-thaw cycles.
Clonality	Monoclonal
Clone	OTI6D4
Preservative	0.02% Sodium Azide
Isotype	IgG2b
Purity	Immunogen affinity purified
Buffer	PBS (pH 7.3), 1.0% BSA and 50% Glycerol
Target Molecular Weight	57.7 kDa

Product Description	
Host	Mouse
Gene ID	279
Gene Symbol	AMY2A
Species	Human
Specificity/Sensitivity	This antibody is specific for Homo sapiens amylase, alpha 2A (pancreatic) (AMY2A).
Immunogen	Recombinant protein expressed in E.coli corresponding to amino acids 300-511 of human AMY2A

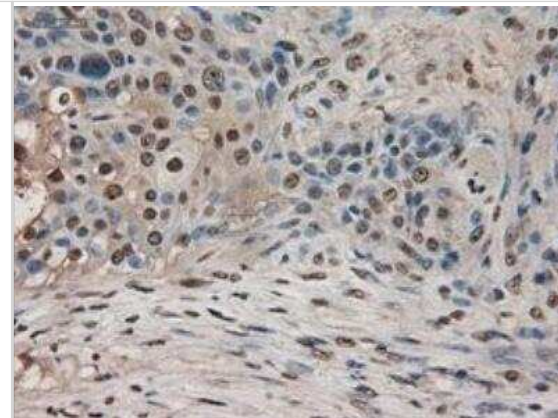
Product Application Details	
Applications	Western Blot, Immunohistochemistry, Immunohistochemistry-Paraffin
Recommended Dilutions	Western Blot 1:500, Immunohistochemistry 1:50, Immunohistochemistry-Paraffin 1:50

Images

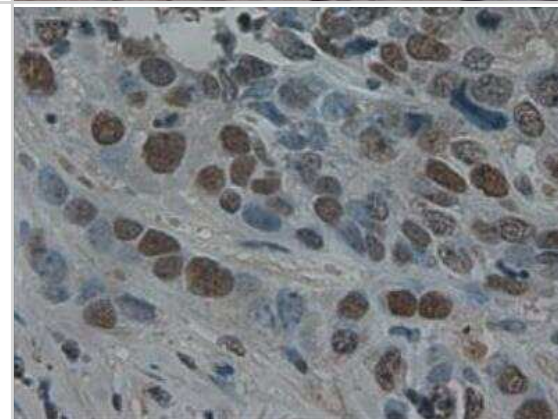
Western Blot: Pancreatic Amylase Alpha Antibody (6D4) [NBP1-47659] - Pancreatic Amylase Alpha Antibody (6D4) HEK293T cells were transfected with the pCMV6-ENTRY control (Left lane) or pCMV6-ENTRY Pancreatic Amylase(Right lane) cDNA for 48 hrs and lysed. Equivalent amounts of cell lysates (5 ug per lane) were separated by SDS-PAGE and immunoblotted with anti-Pancreatic Amylase.



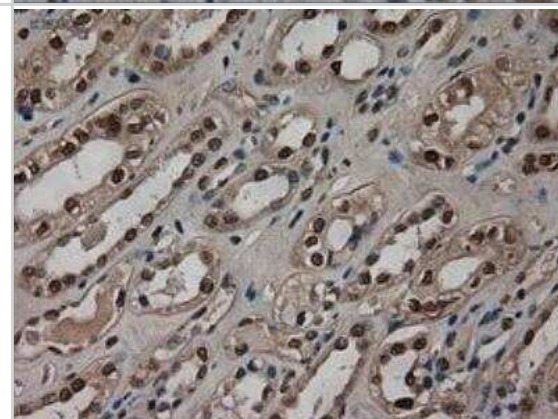
Immunohistochemistry-Paraffin: Pancreatic Amylase Alpha Antibody (6D4) [NBP1-47659] - Pancreatic Amylase Alpha Antibody (6D4)
Staining of paraffin-embedded ovary using anti-Pancreatic Amylase mouse monoclonal antibody.



Immunohistochemistry-Paraffin: Pancreatic Amylase Alpha Antibody (6D4) [NBP1-47659] - Pancreatic Amylase Alpha Antibody (6D4)
Staining of paraffin-embedded Adenocarcinoma of breast using anti-Pancreatic Amylase mouse monoclonal antibody.



Immunohistochemistry-Paraffin: Pancreatic Amylase Alpha Antibody (6D4) [NBP1-47659] - Pancreatic Amylase Alpha Antibody (6D4)
Staining of paraffin-embedded Adenocarcinoma of ovary using anti-Pancreatic Amylase mouse monoclonal antibody.



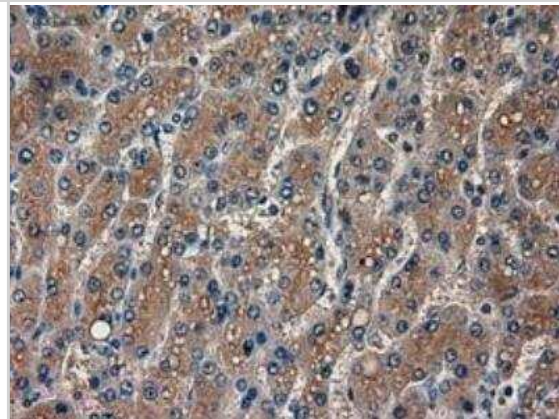
Immunohistochemistry-Paraffin: Pancreatic Amylase Alpha Antibody (6D4) [NBP1-47659] - Pancreatic Amylase Alpha Antibody (6D4)
Staining of paraffin-embedded Carcinoma of kidney using anti-Pancreatic Amylase mouse monoclonal antibody.



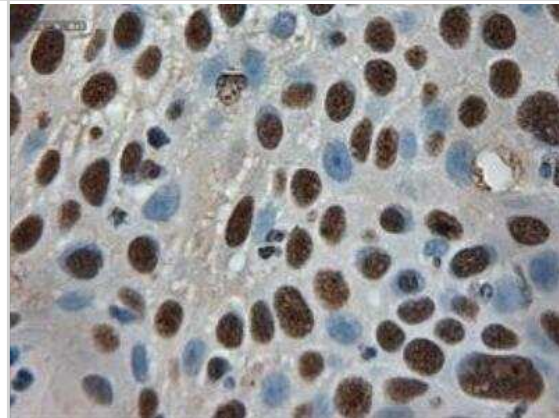
Immunohistochemistry-Paraffin: Pancreatic Amylase Alpha Antibody (6D4) [NBP1-47659] - Pancreatic Amylase Alpha Antibody (6D4)
Staining of paraffin-embedded Carcinoma of liver using anti-Pancreatic Amylase mouse monoclonal antibody.



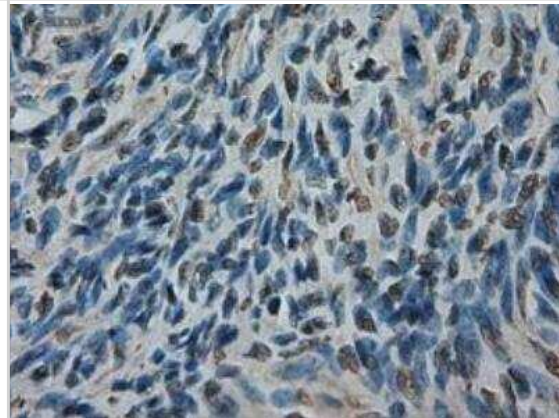
Immunohistochemistry-Paraffin: Pancreatic Amylase Alpha Antibody (6D4) [NBP1-47659] - Pancreatic Amylase Alpha Antibody (6D4)
Staining of paraffin-embedded Carcinoma of lung using anti-Pancreatic Amylase mouse monoclonal antibody.



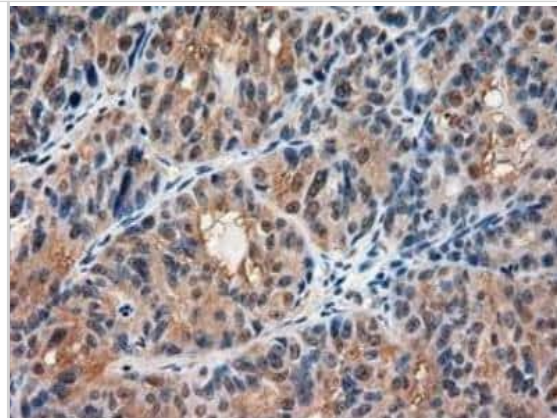
Immunohistochemistry-Paraffin: Pancreatic Amylase Alpha Antibody (6D4) [NBP1-47659] - Pancreatic Amylase Alpha Antibody (6D4)
Staining of paraffin-embedded Carcinoma of pancreas using anti-Pancreatic Amylase mouse monoclonal antibody.



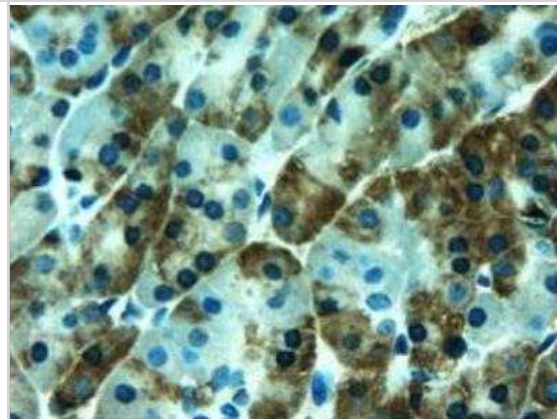
Immunohistochemistry-Paraffin: Pancreatic Amylase Alpha Antibody (6D4) [NBP1-47659] - Pancreatic Amylase Alpha Antibody (6D4)
Staining of paraffin-embedded endometrium using anti-Pancreatic Amylase mouse monoclonal antibody.



Immunohistochemistry-Paraffin: Pancreatic Amylase Alpha Antibody (6D4) [NBP1-47659] - Pancreatic Amylase Alpha Antibody (6D4)
Staining of paraffin-embedded kidney using anti-Pancreatic Amylase mouse monoclonal antibody.



Immunohistochemistry-Paraffin: Pancreatic Amylase Alpha Antibody (6D4) [NBP1-47659] - Pancreatic Amylase Alpha Antibody (6D4)
Staining of paraffin-embedded liver using anti-Pancreatic Amylase mouse monoclonal antibody.





Novus Biologicals USA

10730 E. Briarwood Avenue
Centennial, CO 80112
USA
Phone: 303.730.1950
Toll Free: 1.888.506.6887
Fax: 303.730.1966
nb-customerservice@bio-techne.com

Bio-Techne Canada

21 Canmotor Ave
Toronto, ON M8Z 4E6
Canada
Phone: 905.827.6400
Toll Free: 855.668.8722
Fax: 905.827.6402
canada.inquires@bio-techne.com

Bio-Techne Ltd

19 Barton Lane
Abingdon Science Park
Abingdon, OX14 3NB, United Kingdom
Phone: (44) (0) 1235 529449
Free Phone: 0800 37 34 15
Fax: (44) (0) 1235 533420
info.EMEA@bio-techne.com

General Contact Information

www.novusbio.com
Technical Support: nb-technical@bio-
techne.com
Orders: nb-customerservice@bio-techne.com
General: novus@novusbio.com

Limitations

This product is for research use only and is not approved for use in humans or in clinical diagnosis. Primary Antibodies are guaranteed for 1 year from date of receipt.

For more information on our 100% guarantee, please visit www.novusbio.com/guarantee

Earn gift cards/discounts by submitting a review: www.novusbio.com/reviews/submit/NBP1-47659

Earn gift cards/discounts by submitting a publication using this product:
www.novusbio.com/publications

