

Product Datasheet

4EBP1 Antibody (11G12C11) - BSA Free NBP1-47366

Unit Size: 0.1 ml

Store at 4C short term. Aliquot and store at -20C long term. Avoid freeze-thaw cycles.

www.novusbio.com



technical@novusbio.com

Publications: 2

Protocols, Publications, Related Products, Reviews, Research Tools and Images at:
www.novusbio.com/NBP1-47366

Updated 10/23/2024 v.20.1

Earn rewards for product
reviews and publications.

Submit a publication at www.novusbio.com/publications

Submit a review at www.novusbio.com/reviews/destination/NBP1-47366



NBP1-47366

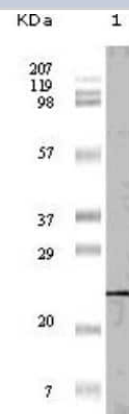
4EBP1 Antibody (11G12C11) - BSA Free

Product Information	
Unit Size	0.1 ml
Concentration	1 mg/ml
Storage	Store at 4C short term. Aliquot and store at -20C long term. Avoid freeze-thaw cycles.
Clonality	Monoclonal
Clone	11G12C11
Preservative	0.03% Sodium Azide
Isotype	IgG1
Purity	Protein G purified
Buffer	PBS
Product Description	
Host	Mouse
Gene ID	1978
Gene Symbol	EIF4EBP1
Species	Human
Immunogen	Purified recombinant fragment of 4EBP1 expressed in E. Coli.
Product Application Details	
Applications	Western Blot, ELISA, Immunohistochemistry, Immunohistochemistry-Paraffin
Recommended Dilutions	Western Blot 1: 500 - 1:2000, ELISA 1:10000, Immunohistochemistry 1:200 - 1:1000, Immunohistochemistry-Paraffin 1:200 - 1:1000

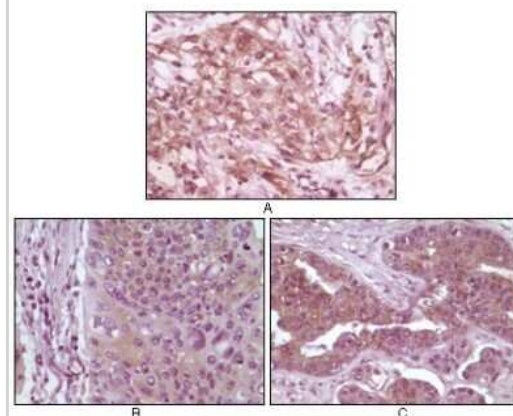


Images

Western Blot: 4EBP1 Antibody (11G12C11) [NBP1-47366] - Analysis using 4E-BP1 mouse mAb against truncated 4E-BP1 recombinant protein (1).



Immunohistochemistry-Paraffin: 4EBP1 Antibody (11G12C11) [NBP1-47366] - Analysis of human pancreas carcinoma (A), esophagus carcinoma tissue (B) and ovary tumor tissue, showing cytoplasmic and membrane localization using 4E-BP1 mouse mAb with DAB staining.



Publications

Li H, Liu L, Chang H et al. Downregulation of MCL-1 and upregulation of PUMA using mTOR inhibitors enhance antitumor efficacy of BH3 mimetics in triple-negative breast cancer Cell Death Dis 2018-01-26 [PMID: 29374168] (WB, Human)

Chauhan SK, Singh VV, Rai R et al. Distinct autoantibody profiles in systemic lupus erythematosus patients are selectively associated with TLR7 and TLR9 upregulation. J Clin Immunol. 2013-07-01 [PMID: 23564191] (WB)

Details:

PBLs (WB) or B-cells (Flow intracellular) from SLE patients or controls: 1. TLR7 mAb clone IMG4G6 (IMG-6675A): WB (Figs 2a, 2c).



Novus Biologicals USA

10730 E. Briarwood Avenue
Centennial, CO 80112
USA
Phone: 303.730.1950
Toll Free: 1.888.506.6887
Fax: 303.730.1966
nb-customerservice@bio-techne.com

Bio-Techne Canada

21 Canmotor Ave
Toronto, ON M8Z 4E6
Canada
Phone: 905.827.6400
Toll Free: 855.668.8722
Fax: 905.827.6402
canada.inquires@bio-techne.com

Bio-Techne Ltd

19 Barton Lane
Abingdon Science Park
Abingdon, OX14 3NB, United Kingdom
Phone: (44) (0) 1235 529449
Free Phone: 0800 37 34 15
Fax: (44) (0) 1235 533420
info.EMEA@bio-techne.com

General Contact Information

www.novusbio.com
Technical Support: nb-technical@bio-techne.com
Orders: nb-customerservice@bio-techne.com
General: novus@novusbio.com

Products Related to NBP1-47366

HAF007	Goat anti-Mouse IgG Secondary Antibody [HRP]
NB720-B	Rabbit anti-Mouse IgG (H+L) Secondary Antibody [Biotin]
NBP1-97005-0.5mg	Mouse IgG1 Isotype Control (MG1)
NBP1-30218	Recombinant Human 4EBP1 His Protein

Limitations

This product is for research use only and is not approved for use in humans or in clinical diagnosis. Primary Antibodies are guaranteed for 1 year from date of receipt.

For more information on our 100% guarantee, please visit www.novusbio.com/guarantee

Earn gift cards/discounts by submitting a review: www.novusbio.com/reviews/submit/NBP1-47366

Earn gift cards/discounts by submitting a publication using this product:
www.novusbio.com/publications

