

Product Datasheet

SMNDC1 Antibody - BSA Free

NBP1-47302

Unit Size: 100 ul

Store at 4C. Do not freeze.

www.novusbio.com



technical@novusbio.com

Reviews: 1 **Publications: 3**

Protocols, Publications, Related Products, Reviews, Research Tools and Images at:
www.novusbio.com/NBP1-47302

Updated 9/9/2025 v.20.1

Earn rewards for product reviews and publications.

Submit a publication at www.novusbio.com/publications

Submit a review at www.novusbio.com/reviews/destination/NBP1-47302



NBP1-47302

SMNDC1 Antibody - BSA Free

Product Information	
Unit Size	100 ul
Concentration	1.0 mg/ml
Storage	Store at 4C. Do not freeze.
Clonality	Polyclonal
Preservative	0.09% Sodium Azide
Isotype	IgG
Purity	Immunogen affinity purified
Buffer	Tris-Citrate/Phosphate (pH 7.0 - 8.0)

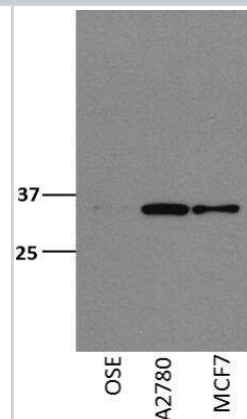
Product Description	
Description	Novus Biologicals Rabbit SMNDC1 Antibody - BSA Free (NBP1-47302) is a polyclonal antibody validated for use in WB and IP. Anti-SMNDC1 Antibody: Cited in 3 publications. All Novus Biologicals antibodies are covered by our 100% guarantee.
Host	Rabbit
Gene ID	10285
Gene Symbol	SMNDC1
Species	Human, Mouse
Reactivity Notes	X. tropicalis (100%).
Immunogen	The immunogen for this product maps to a region between residue 188 and 238 of human Splicing Factor 30 using the numbering given in entry NP_005862.1 (GeneID 10285).

Product Application Details	
Applications	Western Blot, Immunoprecipitation
Recommended Dilutions	Western Blot 1:2000-1:10000, Immunoprecipitation 2-5 ug/mg lysate
Application Notes	Western blot of lysates performed using standard western blot reagents and 4-20% SDS-PAGE.

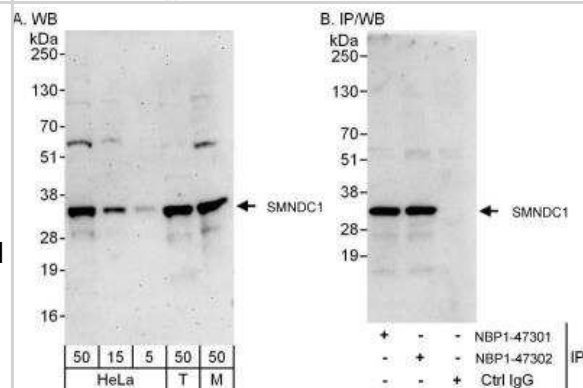


Images

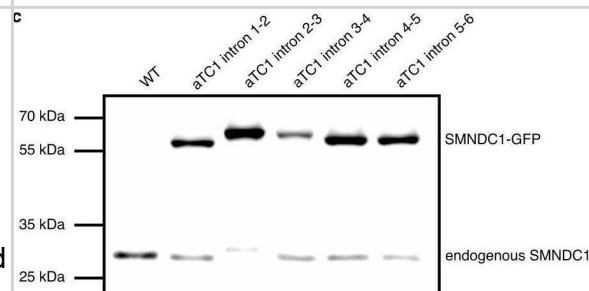
Western Blot: SMNDC1 Antibody [NBP1-47302] - Whole cell lysates from ovarian surface epithelial cells (OSE), ovarian cancer cell line A2780, breast cancer cell line MCF7. Image submitted by a verified customer review.



Western Blot: SMNDC1 Antibody [NBP1-47302] - Samples: Whole cell lysate from HeLa (5, 15 and 50 ug for WB; 1 mg for IP, 20% of IP loaded), 293T (T; 50 ug), and mouse NIH3T3 (M; 50 ug) cells. Antibodies: Affinity purified rabbit anti-SMNDC1 antibody NBP1-47302 used for WB at 0.1 ug/ml (A) and 1 ug/ml (B) and used for IP at 3 ug/mg lysate. SPF30 was also immunoprecipitated by rabbit anti-SMNDC1 antibody NBP1-47301, which recognizes an upstream epitope. Detection: Chemiluminescence with exposure times of 3 minutes (A) and 10 seconds (B).



SMNDC1 co-localizes with nuclear speckle markers. a Overview of SMNDC1's structure with numbered truncations (for Fig. 2f), intrinsic disorder prediction plot (MetaDisorder36), AlphaFold structure prediction with Tudor domain marked in red and positions of GFP intron-tags in green. b Live images of clonal cell lines (α TC1 and HAP1) with the endogenous GFP-tag in green. c Immunoblots showing expression of WT SMNDC1 and SMNDC1-GFP fusion proteins in clonal cell lines with GFP-tag in different introns. d Live (SMNDC1-GFP intron 2-3, α TC1) and immunofluorescence images (α TC1 WT) with nuclear staining (DRAQ5TM in red/ DAPI in blue). e Live imaging (SMNDC1-GFP intron 2-3, α TC1) with DRAQ5TM nuclear staining showing a cell during M-phase. f Immunofluorescence images (α TC1 WT) with SMNDC1 (green) and SC35 antibody (magenta), overlap of green and magenta is white. g Live imaging (SMNDC1-GFP intron 2-3, SRRM2-RFP intron 9-10, α TC1) with DRAQ5TM nuclear staining (blue) showing a cell during telophase. h Co-localization analyses of interphase (n = 114) and mitotic (n = 13) cells, Pearson correlation between different channels of maximum intensity projections of z-stack images. Data shown as scatter plot + median line, analyzed by two-tailed, unpaired t-test. Image collected and cropped by CiteAb from the following open publication (<https://pubmed.ncbi.nlm.nih.gov/37587144>), licensed under a CC-BY license. Not internally tested by Novus Biologicals.



Publications

Enders L, Siklos M, Borggröfe J et al. Pharmacological perturbation of the phase-separating protein SMNDC1 Nature Communications 2023-08-16 [PMID: 37587144] (Western Blot, Human)

Casteels T, Bajew S, Reiniš J et al. SMNDC1 links chromatin remodeling and splicing to regulate pancreatic hormone expression Cell reports 2022-08-30 [PMID: 36044849] (WB)

Details:

Dilutions: 1:100

Giri K, Shameer K, Zimmermann MT et al. Understanding Protein-Nanoparticle Interaction: A New Gateway to Disease Therapeutics. Bioconjug. Chem. 2014-05-22 [PMID: 24831101] (WB, Human)





Novus Biologicals USA

10730 E. Briarwood Avenue
Centennial, CO 80112
USA
Phone: 303.730.1950
Toll Free: 1.888.506.6887
Fax: 303.730.1966
nb-customerservice@bio-techne.com

Bio-Techne Canada

21 Canmotor Ave
Toronto, ON M8Z 4E6
Canada
Phone: 905.827.6400
Toll Free: 855.668.8722
Fax: 905.827.6402
canada.inquires@bio-techne.com

Bio-Techne Ltd

19 Barton Lane
Abingdon Science Park
Abingdon, OX14 3NB, United Kingdom
Phone: (44) (0) 1235 529449
Free Phone: 0800 37 34 15
Fax: (44) (0) 1235 533420
info.EMEA@bio-techne.com

General Contact Information

www.novusbio.com
Technical Support: nb-technical@bio-techne.com
Orders: nb-customerservice@bio-techne.com
General: novus@novusbio.com

Products Related to NBP1-47302

NBP2-33376H	Blue Marker Antibody (6F4-F6) [HRP]
HAF008	Goat anti-Rabbit IgG Secondary Antibody [HRP]
NB7160	Goat anti-Rabbit IgG (H+L) Secondary Antibody [HRP]
NBP2-24891	Rabbit IgG Isotype Control

Limitations

This product is for research use only and is not approved for use in humans or in clinical diagnosis. Primary Antibodies are guaranteed for 1 year from date of receipt.

For more information on our 100% guarantee, please visit www.novusbio.com/guarantee

Earn gift cards/discounts by submitting a review: www.novusbio.com/reviews/submit/NBP1-47302

Earn gift cards/discounts by submitting a publication using this product:
www.novusbio.com/publications

