

Product Datasheet

DNA polymerase alpha Antibody NBP1-47257

Unit Size: 0.1 ml

Store at 4C. Do not freeze.

www.novusbio.com



technical@novusbio.com

Reviews: 1 Publications: 1

Protocols, Publications, Related Products, Reviews, Research Tools and Images at:
www.novusbio.com/NBP1-47257

Updated 9/9/2025 v.20.1

**Earn rewards for product
reviews and publications.**

Submit a publication at www.novusbio.com/publications

Submit a review at www.novusbio.com/reviews/destination/NBP1-47257



NBP1-47257**DNA polymerase alpha Antibody**

Product Information	
Unit Size	0.1 ml
Concentration	0.2 mg/ml
Storage	Store at 4C. Do not freeze.
Clonality	Polyclonal
Preservative	0.09% Sodium Azide
Isotype	IgG
Purity	Immunogen affinity purified
Buffer	TBS, 0.1% BSA

Product Description	
Description	Novus Biologicals Rabbit DNA polymerase alpha Antibody (NBP1-47257) is a polyclonal antibody validated for use in WB and IP. Anti-DNA polymerase alpha Antibody: Cited in 1 publication. All Novus Biologicals antibodies are covered by our 100% guarantee.
Host	Rabbit
Gene ID	5422
Gene Symbol	POLA1
Species	Human
Immunogen	The immunogen for this product maps to a region between residue 1175 and 1225 of human Polymerase (DNA directed), Alpha 1, Catalytic Subunit using the numbering given in entry NP_058633.2 (GenelD 5422).

Product Application Details	
Applications	Western Blot, Immunoprecipitation
Recommended Dilutions	Western Blot 1:2000 - 1:10000, Immunoprecipitation 2 - 5 ug/mg lysate

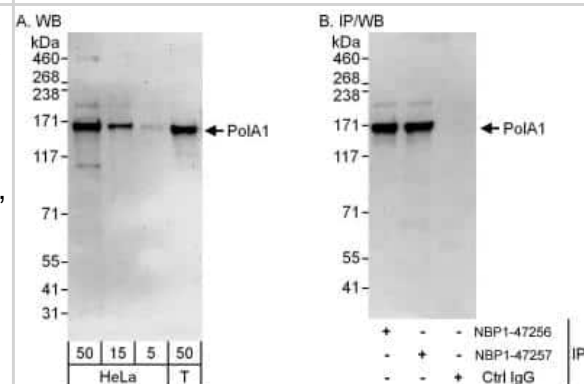


Images

Western Blot: DNA polymerase alpha Antibody [NBP1-47257] - Human B cell lysate (40 ug). KSHV infection protects DNA polA1 from hypoxia mediated degradation. Mock or KSHV infected B cells were grown under normoxic or hypoxic condition followed by detecting DNA polA1 levels. Western blot image submitted by a verified customer review.



Western Blot: DNA polymerase alpha Antibody [NBP1-47257] - Samples: Whole cell lysate from HeLa (5, 15 and 50 ug for WB; 1 mg for IP, 20% of IP loaded) and 293T (T; 50 ug) cells. Antibodies: Affinity purified rabbit anti-PolA1 antibody NBP1-47257 used for WB at 0.04 ug/mL (A) and 0.4 ug/ml (B) and used for IP at 3 ug/mg lysate. PolA1 was also immunoprecipitated by rabbit anti-PolA1 antibody NBP1-47256, which recognizes an upstream epitope. Detection: Chemiluminescence with exposure times of 3 minutes (A) and 30 seconds (B).



Publications

Singh RK, Lamplugh ZL, Lang F et al. KSHV-encoded LANA protects the cellular replication machinery from hypoxia induced degradation PLoS Pathog. 2019-09-01 [PMID: 31479497] (WB, Human)



Novus Biologicals USA

10730 E. Briarwood Avenue
Centennial, CO 80112
USA
Phone: 303.730.1950
Toll Free: 1.888.506.6887
Fax: 303.730.1966
nb-customerservice@bio-techne.com

Bio-Techne Canada

21 Canmotor Ave
Toronto, ON M8Z 4E6
Canada
Phone: 905.827.6400
Toll Free: 855.668.8722
Fax: 905.827.6402
canada.inquires@bio-techne.com

Bio-Techne Ltd

19 Barton Lane
Abingdon Science Park
Abingdon, OX14 3NB, United Kingdom
Phone: (44) (0) 1235 529449
Free Phone: 0800 37 34 15
Fax: (44) (0) 1235 533420
info.EMEA@bio-techne.com

General Contact Information

www.novusbio.com
Technical Support: nb-technical@bio-techne.com
Orders: nb-customerservice@bio-techne.com
General: novus@novusbio.com

Products Related to NBP1-47257

HAF008	Goat anti-Rabbit IgG Secondary Antibody [HRP]
NB7160	Goat anti-Rabbit IgG (H+L) Secondary Antibody [HRP]
NBP2-24891	Rabbit IgG Isotype Control
H00005422-Q01-10ug	Recombinant Human DNA polymerase alpha GST (N-Term) Protein

Limitations

This product is for research use only and is not approved for use in humans or in clinical diagnosis. Primary Antibodies are guaranteed for 1 year from date of receipt.

For more information on our 100% guarantee, please visit www.novusbio.com/guarantee

Earn gift cards/discounts by submitting a review: www.novusbio.com/reviews/submit/NBP1-47257

Earn gift cards/discounts by submitting a publication using this product:
www.novusbio.com/publications

