

Product Datasheet

CAMP/Cathelicidin Antibody (OSX12) **NBP1-46781**

Unit Size: 0.1 mg

Store at 4C short term. Aliquot and store at -20C long term. Avoid freeze-thaw cycles.

www.novusbio.com



technical@novusbio.com

Publications: 1

Protocols, Publications, Related Products, Reviews, Research Tools and Images at:
www.novusbio.com/NBP1-46781

Updated 10/23/2024 v.20.1

**Earn rewards for product
reviews and publications.**

Submit a publication at www.novusbio.com/publications

Submit a review at www.novusbio.com/reviews/destination/NBP1-46781



NBP1-46781**CAMP/Cathelicidin Antibody (OSX12)**

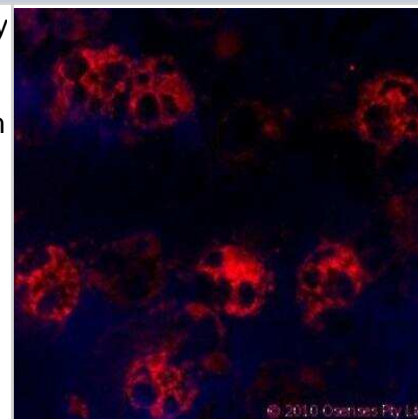
Product Information	
Unit Size	0.1 mg
Concentration	Please see the vial label for concentration. If unlisted please contact technical services.
Storage	Store at 4C short term. Aliquot and store at -20C long term. Avoid freeze-thaw cycles.
Clonality	Monoclonal
Clone	OSX12
Preservative	No Preservative
Reconstitution Instructions	Reconstitute in 0.1 ml of sterile water. Centrifuge to remove any insoluble material. Glycerol may be added (1:1) for additional stability. Please note the sample size is provided in reconstituted format.
Isotype	IgG1 Kappa
Purity	Ammonium sulfate precipitation
Buffer	Sterilized water

Product Description	
Host	Mouse
Gene ID	820
Gene Symbol	CAMP
Species	Human
Immunogen	A synthetic peptide from human CAMP/Cathelicidin conjugated to an immunogenic carrier protein has been used as the antigen.

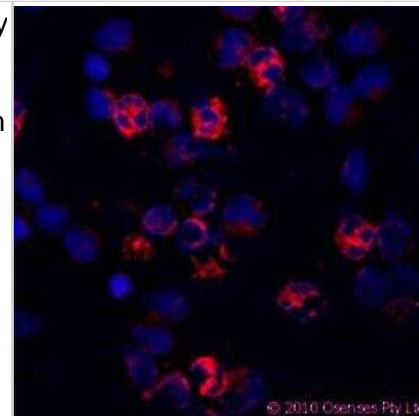
Product Application Details	
Applications	Western Blot, Flow Cytometry, Immunocytochemistry/ Immunofluorescence, Immunohistochemistry, Immunohistochemistry-Paraffin, Immunoprecipitation
Recommended Dilutions	Western Blot 5-10 ug/ml, Flow Cytometry 5-10 ug/ml, Immunohistochemistry 5-10 ug/ml, Immunocytochemistry/ Immunofluorescence 5-10 ug/ml, Immunoprecipitation, Immunohistochemistry-Paraffin 5-10 ug/ml
Application Notes	The optimal concentration should be determined by the end user. Use in immunoprecipitation reported in scientific literature (PMID 26508735)

Images

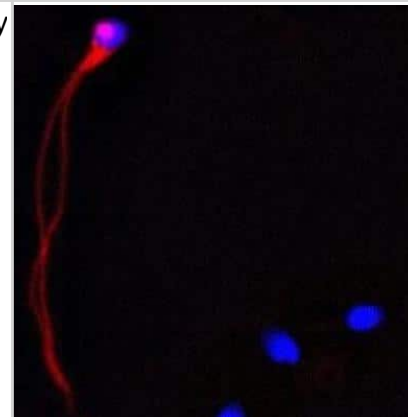
Immunocytochemistry/Immunofluorescence: CAMP/Cathelicidin Antibody (OSX12) [NBP1-46781] - Staining of a cytospin preparation of peripheral blood mononuclear cells (PBMC) isolated from buffycoat. Cells were left to air dry and then fixed with cold acetone (90 seconds) and blocked with PBS containing 1% FCS and 0.1% saponin (blocking buffer).



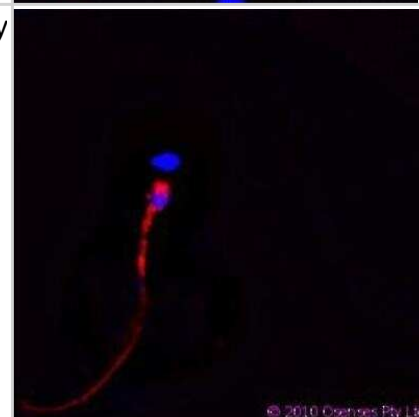
Immunocytochemistry/Immunofluorescence: CAMP/Cathelicidin Antibody (OSX12) [NBP1-46781] - Staining of a cytospin preparation of peripheral blood mononuclear cells (PBMC) isolated from buffycoat. Cells were left to air dry and then fixed with cold acetone (90 seconds) and blocked with PBS containing 1% FCS and 0.1% saponin (blocking buffer) for 20 minutes. Cells were then washed twice in PBS and incubated with Mouse monoclonal to human Cathelicidin (CAP-18, antibacterial protein LL-37, CAMP, CRAMP, FALL39): OSX12 clone at a concentration of 10 ug/ml. DAPI counterstained appearing in blue. The antibody selectively recognizes polymorphonuclear cells.



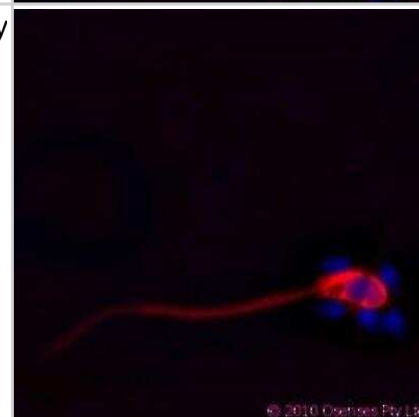
Immunocytochemistry/Immunofluorescence: CAMP/Cathelicidin Antibody (OSX12) [NBP1-46781] - Staining on ethanol-fixed human spermatozoid using Mouse monoclonal to human Cathelicidin (CAP-18, antibacterial protein LL-37, CAMP, CRAMP, FALL39): OSX12 clone at a concentration of 10 ug/ml. DAPI counterstained appearing in blue.



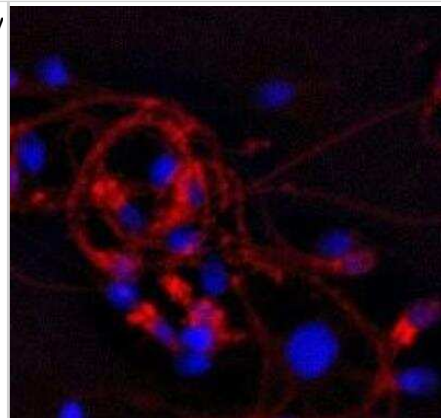
Immunocytochemistry/Immunofluorescence: CAMP/Cathelicidin Antibody (OSX12) [NBP1-46781] - Staining on ethanol-fixed human spermatozoid using Mouse monoclonal to human Cathelicidin (CAP-18, antibacterial protein LL-37, CAMP, CRAMP, FALL39): OSX12 clone at a concentration of 10 ug/ml. DAPI counterstained appearing in blue.



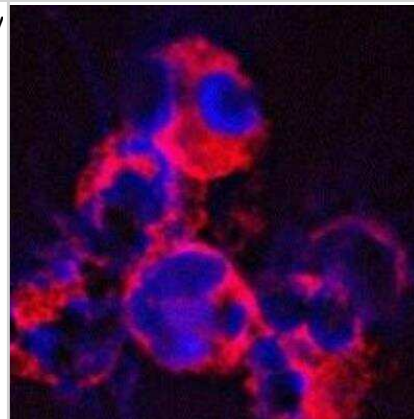
Immunocytochemistry/Immunofluorescence: CAMP/Cathelicidin Antibody (OSX12) [NBP1-46781] - Staining on ethanol-fixed human spermatozoid using Mouse monoclonal to human Cathelicidin (CAP-18, antibacterial protein LL-37, CAMP, CRAMP, FALL39): OSX12 clone at a concentration of 10 ug/ml. DAPI counterstained appearing in blue.



Immunocytochemistry/Immunofluorescence: CAMP/Cathelicidin Antibody (OSX12) [NBP1-46781] - Staining on ethanol-fixed human spermatosoid using Mouse monoclonal to human Cathelicidin (CAP-18, antibacterial protein LL-37, CAMP, CRAMP, FALL39): OSX12 clone at a concentration of 10 ug/ml. DAPI counterstained appearing in blue.



Immunocytochemistry/Immunofluorescence: CAMP/Cathelicidin Antibody (OSX12) [NBP1-46781] - Staining of a cytospin preparation of peripheral blood mononuclear cells (PBMC) isolated from buffycoat. Cells were left to air dry and then fixed with cold acetone (90 seconds) and blocked with PBS containing 1% FCS and 0.1% saponin (blocking buffer) for 20 minutes. Cells were then washed twice in PBS and incubated with Mouse monoclonal to human Cathelicidin (CAP-18, antibacterial protein LL-37, CAMP, CRAMP, FALL39): OSX12 clone at a concentration of 10 ug/ml. DAPI counterstained appearing in blue. The antibody selectively recognizes polymorphonuclear cells



Publications

Svensson D, Wilk L, Morgelin M et al. LL-37-induced host cell cytotoxicity depends on cellular expression of the globular C1q receptor (p33). Biochem J 2016-01-01 [PMID: 26508735] (WB, Human)



Novus Biologicals USA

10730 E. Briarwood Avenue
Centennial, CO 80112
USA
Phone: 303.730.1950
Toll Free: 1.888.506.6887
Fax: 303.730.1966
nb-customerservice@bio-techne.com

Bio-Techne Canada

21 Canmotor Ave
Toronto, ON M8Z 4E6
Canada
Phone: 905.827.6400
Toll Free: 855.668.8722
Fax: 905.827.6402
canada.inquires@bio-techne.com

Bio-Techne Ltd

19 Barton Lane
Abingdon Science Park
Abingdon, OX14 3NB, United Kingdom
Phone: (44) (0) 1235 529449
Free Phone: 0800 37 34 15
Fax: (44) (0) 1235 533420
info.EMEA@bio-techne.com

General Contact Information

www.novusbio.com
Technical Support: nb-technical@bio-techne.com
Orders: nb-customerservice@bio-techne.com
General: novus@novusbio.com

Products Related to NBP1-46781

HAF007	Goat anti-Mouse IgG Secondary Antibody [HRP]
NB720-B	Rabbit anti-Mouse IgG (H+L) Secondary Antibody [Biotin]
NBP1-43319-0.5mg	Mouse IgG1 Kappa Isotype Control (P3.6.2.8.1)
NBP1-88203PEP	CAMP/Cathelicidin Recombinant Protein Antigen

Limitations

This product is for research use only and is not approved for use in humans or in clinical diagnosis. Primary Antibodies are guaranteed for 1 year from date of receipt.

For more information on our 100% guarantee, please visit www.novusbio.com/guarantee

Earn gift cards/discounts by submitting a review: www.novusbio.com/reviews/submit/NBP1-46781

Earn gift cards/discounts by submitting a publication using this product:
www.novusbio.com/publications

