

Product Datasheet

KISS1 Antibody NBP1-45672-0.025mg

Unit Size: 0.025 mg

Aliquot and store at -20C or -80C. Avoid freeze-thaw cycles.

www.novusbio.com



technical@novusbio.com

Publications: 5

Protocols, Publications, Related Products, Reviews, Research Tools and Images at:
www.novusbio.com/NBP1-45672

Updated 4/20/2025 v.20.1

Earn rewards for product
reviews and publications.

Submit a publication at www.novusbio.com/publications

Submit a review at www.novusbio.com/reviews/destination/NBP1-45672



NBP1-45672-0.025mg**KISS1 Antibody**

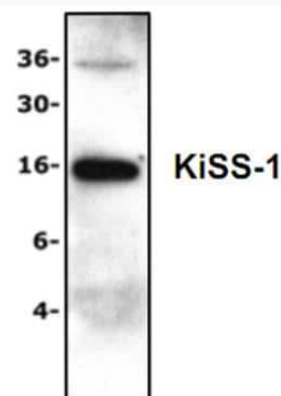
Product Information	
Unit Size	0.025 mg
Concentration	0.5 mg/ml
Storage	Aliquot and store at -20C or -80C. Avoid freeze-thaw cycles.
Clonality	Polyclonal
Preservative	0.03% Proclin 300
Isotype	IgG
Purity	Affinity purified
Buffer	PBS (pH 7.2), 5 mM EDTA, 0.5% BSA, 30% Glycerol

Product Description	
Description	This product is manufactured by Abcam and distributed by Novus Biologicals. (Abcam Catalog Number: ab286128)
Host	Rabbit
Gene ID	3814
Gene Symbol	KISS1
Species	Human, Rat
Immunogen	Synthetic peptide surrounding amino acid 17 of mouse KiSS-1 (NP_839991).

Product Application Details	
Applications	Western Blot
Recommended Dilutions	Western Blot 0.5 - 4 ug/mL

Images

Western Blot: KISS1 Antibody [NBP1-45672] - Analysis of KiSS-1 expression with Jurkat Cell Lysate.



Publications

Shen Y, Zhao H, Zhang L Et Al. The roles of DNA methylation and hydroxymethylation at short interspersed nuclear elements in the hypothalamic arcuate nucleus during puberty Molecular Therapy - Nucleic Acids 2021-07-01 [PMID: 34513307] (WB)

Dees WL, Hiney JK, Srivastava VK Regulation of prepubertal dynorphin secretion in the medial basal hypothalamus of the female rat J. Neuroendocrinol. 2019-12-01 [PMID: 31715027] (WB, Rat)

Srivastava Vinod K, Hiney Jill K, Dees William L et al. Alcohol Delays the Onset of Puberty in the Female Rat by Altering Key Hypothalamic Events. Alcoholism, Clinical and Experimental Research 2018-07-01 [PMID: 29689132] (WB, Rat)

Hiney JK, Srivastava VK, Vaden Anderson DN et al. Regulation of kisspeptin synthesis and release in the preoptic/anterior hypothalamic region of prepubertal female rats: actions of IGF-1 and alcohol Alcohol. Clin. Exp. Res. 2017-10-26 [PMID: 29072778] (Rat)

Srivastava VK, Hiney JK, Dees WL. Manganese stimulated Kisspeptin is mediated by the Insulin-like growth factor-1/Akt/ mammalian target of rapamycin pathway in the prepubertal female rat. Endocrinology 2016-06-16 [PMID: 27309941] (WB)





Novus Biologicals USA

10730 E. Briarwood Avenue
Centennial, CO 80112
USA
Phone: 303.730.1950
Toll Free: 1.888.506.6887
Fax: 303.730.1966
nb-customerservice@bio-techne.com

Bio-Techne Canada

21 Canmotor Ave
Toronto, ON M8Z 4E6
Canada
Phone: 905.827.6400
Toll Free: 855.668.8722
Fax: 905.827.6402
canada.inquires@bio-techne.com

Bio-Techne Ltd

19 Barton Lane
Abingdon Science Park
Abingdon, OX14 3NB, United Kingdom
Phone: (44) (0) 1235 529449
Free Phone: 0800 37 34 15
Fax: (44) (0) 1235 533420
info.EMEA@bio-techne.com

General Contact Information

www.novusbio.com
Technical Support: nb-technical@bio-techne.com
Orders: nb-customerservice@bio-techne.com
General: novus@novusbio.com

Products Related to NBP1-45672-0.025mg

HAF008	Goat anti-Rabbit IgG Secondary Antibody [HRP]
NB7160	Goat anti-Rabbit IgG (H+L) Secondary Antibody [HRP]
NBP2-24891	Rabbit IgG Isotype Control
NBC1-18516	Recombinant Human KISS1 Protein

Limitations

This product is for research use only and is not approved for use in humans or in clinical diagnosis. Primary Antibodies are guaranteed for 1 year from date of receipt.

For more information on our 100% guarantee, please visit www.novusbio.com/guarantee

Earn gift cards/discounts by submitting a review: www.novusbio.com/reviews/submit/NBP1-45672

Earn gift cards/discounts by submitting a publication using this product:
www.novusbio.com/publications

