

# Product Datasheet

## PSMA/FOLH1/NAALADase I Antibody (GCP-05) - BSA Free NBP1-45058

Unit Size: 0.1 mg

Store at 4C. Do not freeze.

[www.novusbio.com](http://www.novusbio.com)



[technical@novusbio.com](mailto:technical@novusbio.com)

Protocols, Publications, Related Products, Reviews, Research Tools and Images at:  
[www.novusbio.com/NBP1-45058](http://www.novusbio.com/NBP1-45058)

Updated 10/23/2024 v.20.1

Earn rewards for product  
reviews and publications.

Submit a publication at [www.novusbio.com/publications](http://www.novusbio.com/publications)

Submit a review at [www.novusbio.com/reviews/destination/NBP1-45058](http://www.novusbio.com/reviews/destination/NBP1-45058)



**NBP1-45058**

PSMA/FOLH1/NAALADase I Antibody (GCP-05) - BSA Free

Product Information	
Unit Size	0.1 mg
Concentration	1 mg/ml
Storage	Store at 4C. Do not freeze.
Clonality	Monoclonal
Clone	GCP-05
Preservative	0.9% Sodium Azide
Isotype	IgG1
Purity	Protein A purified
Buffer	PBS (pH 7.4)
Target Molecular Weight	110 kDa

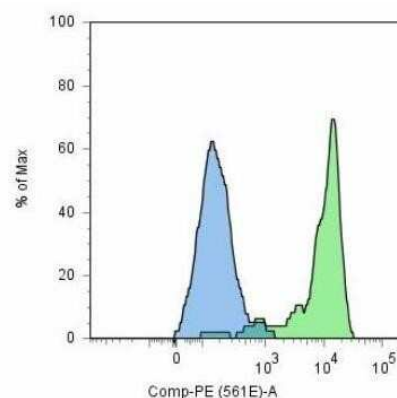
Product Description	
Host	Mouse
Gene ID	2346
Gene Symbol	FOLH1
Species	Human
Specificity/Sensitivity	The antibody GCP-05 recognizes extracellular domain of glutamate carboxypeptidase II (NAALADase, FOLH1, PSMA), an approximately 95-110 kDa transmembrane glycoprotein expressed mainly in tumour neovasculatures, nervous system and jejunum, which is an important prostate tumour marker.
Immunogen	amino acids 44-750 of human GCPII

Product Application Details	
Applications	Flow Cytometry, Immunocytochemistry/ Immunofluorescence, Immunoprecipitation, CyTOF-ready
Recommended Dilutions	Flow Cytometry 1-4 ug/ml, Immunocytochemistry/ Immunofluorescence 1:10-1:2000, Immunoprecipitation 1:50, CyTOF-ready
Application Notes	This antibody is Cytof ready.

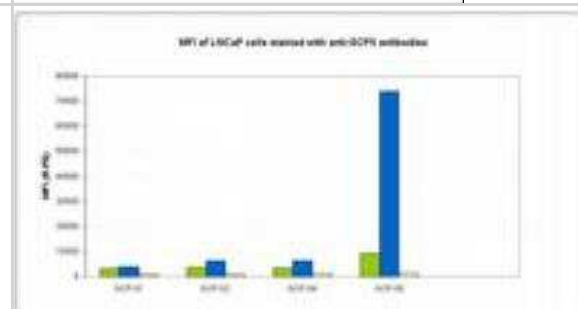


## Images

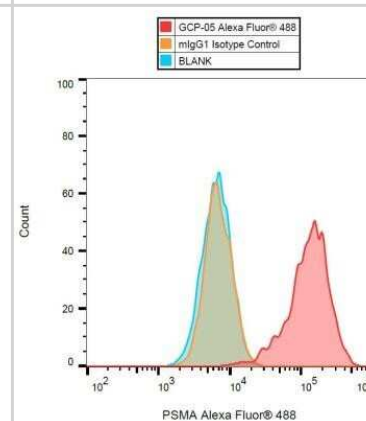
Flow Cytometry: PSMA/FOLH1/NAALADase I Antibody (GCP-05) [NBP1-45058] - Flow Cytometry: PSMA/FOLH1/NAALADase I Antibody (GCP-05) [PE] [NBP1-45056] - Surface staining (flow cytometry) of GCPII / PSMA using anti-GCPII (GCP-05) PE on LNCaP cell line. Image using the PE form of this antibody.



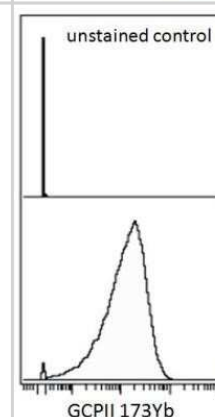
Flow Cytometry: PSMA/FOLH1/NAALADase I Antibody (GCP-05) [NBP1-45058] - Analysis of GCPII (PSMA) by various monoclonal antibodies (GCP-01, GCP-02, GCP-04, GCP-05) on LNCaP cell line. Legend: Green column - 1 ug/ml, LNCaP cell line Blue column - 5 ug/ml, LNCaP cell line Yellow column - negative cell line



Flow Cytometry: PSMA/FOLH1/NAALADase I Antibody (GCP-05) [NBP1-45058] - Flow Cytometry: PSMA/FOLH1/NAALADase I Antibody (GCP-05) [PE] [NBP1-45056] - Surface staining (flow cytometry) of GCPII / PSMA using anti-GCPII (GCP-05) Alexa Fluor 488 on LNCaP cell line. Image using the PE form of this antibody.



Flow Cytometry: PSMA/FOLH1/NAALADase I Antibody (GCP-05) [NBP1-45058] - Flow Cytometry: PSMA/FOLH1/NAALADase I Antibody (GCP-05) [PE] [NBP1-45056] - Surface staining (mass cytometry) of LNCaP cell line using anti-GCPII (GCP-05) 173Yb. Gated on singlets. Image using the PE form of this antibody.





### **Novus Biologicals USA**

10730 E. Briarwood Avenue  
Centennial, CO 80112  
USA  
Phone: 303.730.1950  
Toll Free: 1.888.506.6887  
Fax: 303.730.1966  
nb-customerservice@bio-techne.com

### **Bio-Techne Canada**

21 Canmotor Ave  
Toronto, ON M8Z 4E6  
Canada  
Phone: 905.827.6400  
Toll Free: 855.668.8722  
Fax: 905.827.6402  
canada.inquires@bio-techne.com

### **Bio-Techne Ltd**

19 Barton Lane  
Abingdon Science Park  
Abingdon, OX14 3NB, United Kingdom  
Phone: (44) (0) 1235 529449  
Free Phone: 0800 37 34 15  
Fax: (44) (0) 1235 533420  
info.EMEA@bio-techne.com

### **General Contact Information**

www.novusbio.com  
Technical Support: nb-technical@bio-techne.com  
Orders: nb-customerservice@bio-techne.com  
General: novus@novusbio.com

### **Products Related to NBP1-45058**

HAF007	Goat anti-Mouse IgG Secondary Antibody [HRP]
NB720-B	Rabbit anti-Mouse IgG (H+L) Secondary Antibody [Biotin]
NBP1-97005-0.5mg	Mouse IgG1 Isotype Control (MG1)
NBP1-45056	PSMA/FOLH1/NAALADase I Antibody (GCP-05) [PE]

### **Limitations**

This product is for research use only and is not approved for use in humans or in clinical diagnosis. Primary Antibodies are guaranteed for 1 year from date of receipt.

For more information on our 100% guarantee, please visit [www.novusbio.com/guarantee](http://www.novusbio.com/guarantee)

Earn gift cards/discounts by submitting a review: [www.novusbio.com/reviews/submit/NBP1-45058](http://www.novusbio.com/reviews/submit/NBP1-45058)

Earn gift cards/discounts by submitting a publication using this product:  
[www.novusbio.com/publications](http://www.novusbio.com/publications)

