

Product Datasheet

Clathrin Heavy Chain 1/CHC17 Antibody (BF-06) - BSA Free NBP1-45050

Unit Size: 0.1 mg

Store at 4C. Do not freeze.

www.novusbio.com



technical@novusbio.com

Protocols, Publications, Related Products, Reviews, Research Tools and Images at:
www.novusbio.com/NBP1-45050

Updated 2/21/2025 v.20.1

Earn rewards for product
reviews and publications.

Submit a publication at www.novusbio.com/publications

Submit a review at www.novusbio.com/reviews/destination/NBP1-45050



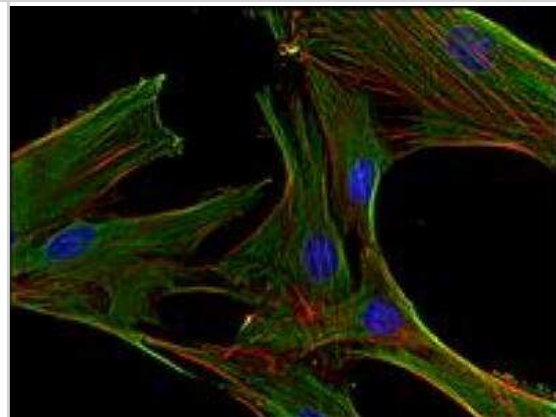
NBP1-45050

Clathrin Heavy Chain 1/CHC17 Antibody (BF-06) - BSA Free

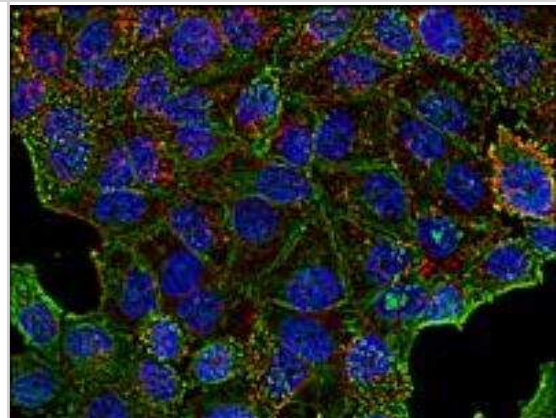
Product Information	
Unit Size	0.1 mg
Concentration	1 mg/ml
Storage	Store at 4C. Do not freeze.
Clonality	Monoclonal
Clone	BF-06
Preservative	0.09% Sodium Azide
Isotype	IgM
Purity	Multi-step
Buffer	Stabilizing Tris buffered saline (TBS)
Target Molecular Weight	180 kDa
Product Description	
Host	Mouse
Gene ID	1213
Gene Symbol	CLTC
Species	Human, Mouse, Rat, Porcine, Bovine
Reactivity Notes	Please note that this antibody is reactive to Mouse and derived from the same host, Mouse. Mouse-On-Mouse blocking reagent may be needed for IHC and ICC experiments to reduce high background signal. You can find these reagents under catalog numbers PK-2200-NB and MP-2400-NB. Please contact Technical Support if you have any questions.
Marker	Clathrin-coated Vesicle Marker
Specificity/Sensitivity	The antibody BF-06 recognizes clathrin heavy chain, an ubiquitously expressed 180 kDa protein involved in receptor-mediated endocytosis.
Immunogen	The antibody BF-06 recognizes clathrin heavy chain, an ubiquitously expressed 180 kDa protein involved in receptor-mediated endocytosis.
Product Application Details	
Applications	Western Blot, ELISA, Flow Cytometry, Immunocytochemistry/ Immunofluorescence, Immunoprecipitation
Recommended Dilutions	Western Blot 1:1000, Flow Cytometry 2-5 ug/ml, ELISA 1:2000, Immunocytochemistry/ Immunofluorescence 1:10-1:2000, Immunoprecipitation 1:50

Images

Immunocytochemistry/Immunofluorescence: Clathrin Heavy Chain 1/CHC17 Antibody (BF-06) [NBP1-45050] - Staining of clathrin in human primary fibroblasts using anti-clathrin (BF-06; green). Actin cytoskeleton decorated by phalloidin (red) and cell nuclei stained with DAPI (blue).



Immunocytochemistry/Immunofluorescence: Clathrin Heavy Chain 1/CHC17 Antibody (BF-06) [NBP1-45050] - Staining of clathrin in human HeLa cell line using anti-clathrin (BF-06; green). Actin cytoskeleton decorated by phalloidin (red) and cell nuclei stained with DAPI (blue).





Novus Biologicals USA

10730 E. Briarwood Avenue
Centennial, CO 80112
USA
Phone: 303.730.1950
Toll Free: 1.888.506.6887
Fax: 303.730.1966
nb-customerservice@bio-techne.com

Bio-Techne Canada

21 Canmotor Ave
Toronto, ON M8Z 4E6
Canada
Phone: 905.827.6400
Toll Free: 855.668.8722
Fax: 905.827.6402
canada.inquires@bio-techne.com

Bio-Techne Ltd

19 Barton Lane
Abingdon Science Park
Abingdon, OX14 3NB, United Kingdom
Phone: (44) (0) 1235 529449
Free Phone: 0800 37 34 15
Fax: (44) (0) 1235 533420
info.EMEA@bio-techne.com

General Contact Information

www.novusbio.com
Technical Support: nb-technical@bio-techne.com
Orders: nb-customerservice@bio-techne.com
General: novus@novusbio.com

Products Related to NBP1-45050

HAF007	Goat anti-Mouse IgG Secondary Antibody [HRP]
NB720-B	Rabbit anti-Mouse IgG (H+L) Secondary Antibody [Biotin]
NBP2-62224	Mouse IgM Isotype Control (PFR-03)
H00001213-Q01-10ug	Recombinant Human Clathrin Heavy Chain 1/CHC17 GST (N-Term) Protein

Limitations

This product is for research use only and is not approved for use in humans or in clinical diagnosis. Primary Antibodies are guaranteed for 1 year from date of receipt.

For more information on our 100% guarantee, please visit www.novusbio.com/guarantee

Earn gift cards/discounts by submitting a review: www.novusbio.com/reviews/submit/NBP1-45050

Earn gift cards/discounts by submitting a publication using this product:
www.novusbio.com/publications

