

Product Datasheet

CD20 Antibody (MEM-97) [PE] NBP1-44634PE

Unit Size: 0.1 ml

Store at 4C in the dark.

www.novusbio.com



technical@novusbio.com

Protocols, Publications, Related Products, Reviews, Research Tools and Images at:
www.novusbio.com/NBP1-44634PE

Updated 10/23/2024 v.20.1

Earn rewards for product
reviews and publications.

Submit a publication at www.novusbio.com/publications

Submit a review at www.novusbio.com/reviews/destination/NBP1-44634PE



NBP1-44634PE

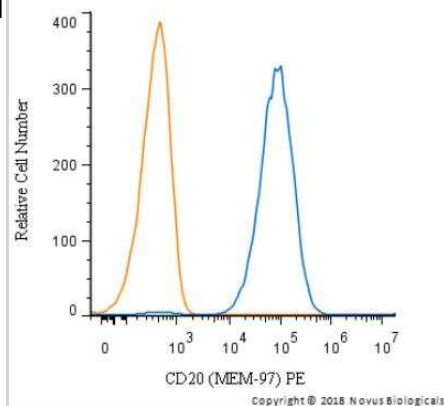
CD20 Antibody (MEM-97) [PE]

Product Information	
Unit Size	0.1 ml
Concentration	Please see the vial label for concentration. If unlisted please contact technical services.
Storage	Store at 4C in the dark.
Clonality	Monoclonal
Clone	MEM-97
Preservative	0.05% Sodium Azide
Isotype	IgG1
Conjugate	PE
Purity	Protein A purified
Buffer	PBS
Product Description	
Host	Mouse
Gene ID	931
Gene Symbol	MS4A1
Species	Human, Porcine, Bovine
Specificity/Sensitivity	The antibody MEM-97 reacts with CD20 (Bp35), a 33-37 kDa non-glycosylated membrane receptor with four transmembrane domains, expressed on B lymphocytes (it is lost on plasma cells), follicular dendritic cells, and at low levels on peripheral blood T lymphocytes. HLDA V; WS Code B CD20.9
Immunogen	Raji human Burkitt's lymphoma cell line (NM_021950.3).
Product Application Details	
Applications	Flow Cytometry, Immunoprecipitation, CyTOF-ready
Recommended Dilutions	Flow Cytometry, Immunoprecipitation, CyTOF-ready

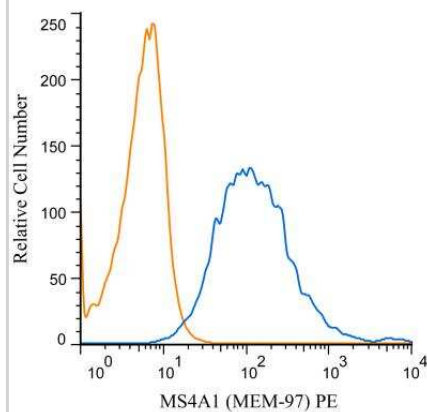


Images

Flow Cytometry: CD20 Antibody (MEM-97) [PE] [NBP1-44634PE] - A cell surface stain was performed on Ramos cells with CD20 antibody (MEM-97) NBP1-44634PE (blue) and a matched isotype control (orange). Cells were incubated in an antibody dilution of 2.5 ug/mL for 20 minutes at room temperature. Both antibodies were conjugated to Phycoerythrin.



Flow Cytometry: MS4A1/CD20 Antibody (MEM-97) [PE] [NBP1-44634PE] - A cell surface stain was performed on Daudi cells with MS4A1/CD20 (MEM-97) antibody NBP1-44634PE (blue) along with a matched isotype control NBP2-27287PE (orange). Cells were incubated in an antibody dilution of 1 ug/mL for 20 minutes at room temperature. Both antibodies were conjugated to Phycoerythrin.





Novus Biologicals USA

10730 E. Briarwood Avenue
Centennial, CO 80112
USA
Phone: 303.730.1950
Toll Free: 1.888.506.6887
Fax: 303.730.1966
nb-customerservice@bio-techne.com

Bio-Techne Canada

21 Canmotor Ave
Toronto, ON M8Z 4E6
Canada
Phone: 905.827.6400
Toll Free: 855.668.8722
Fax: 905.827.6402
canada.inquires@bio-techne.com

Bio-Techne Ltd

19 Barton Lane
Abingdon Science Park
Abingdon, OX14 3NB, United Kingdom
Phone: (44) (0) 1235 529449
Free Phone: 0800 37 34 15
Fax: (44) (0) 1235 533420
info.EMEA@bio-techne.com

General Contact Information

www.novusbio.com
Technical Support: nb-technical@bio-techne.com
Orders: nb-customerservice@bio-techne.com
General: novus@novusbio.com

Products Related to NBP1-44634PE

NBP1-97005PE	Mouse IgG1 Isotype Control (MG1) [PE]
NBP1-44634APC	CD20 Antibody (MEM-97) [Allophycocyanin]
NBP2-61455-10ug	Recombinant Human CD20 His Protein
210-TA-005	TNF-alpha [Unconjugated]

Limitations

This product is for research use only and is not approved for use in humans or in clinical diagnosis. Primary Antibodies are guaranteed for 1 year from date of receipt.

For more information on our 100% guarantee, please visit www.novusbio.com/guarantee

Earn gift cards/discounts by submitting a review: www.novusbio.com/reviews/submit/NBP1-44634PE

Earn gift cards/discounts by submitting a publication using this product:
www.novusbio.com/publications

