

Product Datasheet

Recombinant Human eIF2 alpha/EIF2S1 His Protein NBP1-44467

Unit Size: 0.05 mg

Store at 4C short term. Aliquot and store at -20C long term. Avoid freeze-thaw cycles.

www.novusbio.com



technical@novusbio.com

Publications: 1

Protocols, Publications, Related Products, Reviews, Research Tools and Images at:
www.novusbio.com/NBP1-44467

Updated 10/23/2024 v.20.1

Earn rewards for product
reviews and publications.

Submit a publication at www.novusbio.com/publications

Submit a review at www.novusbio.com/reviews/destination/NBP1-44467



NBP1-44467

Recombinant Human eIF2 alpha/EIF2S1 His Protein

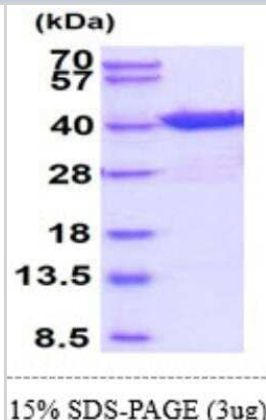
Product Information	
Unit Size	0.05 mg
Concentration	0.5 mg/ml
Storage	Store at 4C short term. Aliquot and store at -20C long term. Avoid freeze-thaw cycles.
Preservative	No Preservative
Purity	>85%, by SDS-PAGE
Buffer	20 mM Tris-HCl buffer (pH8.0), 10% glycerol, 0.1 M NaCl
Target Molecular Weight	38.2 kDa

Product Description	
Description	<p>A recombinant protein with a N-Terminal His-tag and corresponding to the amino acids 1-315 of Human eIF2 alpha/EIF2S1</p> <p>Source: <i>E.coli</i></p> <p>Amino Acid Sequence: MGSSHHHHHH SGLVPRGSH MPGLSCRFYQ HKFPEVEDVV MVNVRSAEM GAYVSLLEYN NIEGMILLSE LSRRRIRSIN KLIRIGRNEC VVIRVDKEK GYIDLSKRRV SPEEAIKCED KFTKSKTVYS ILRHVAEVLE YTKDEQLESL FQRTAWVFDD KYKRPYGAY DAFKHAVSDP SILDSLNLNE DEREVLINNI NRRLTPQAVK IRADIEVACY GYEGIDAVKE ALRAGLNCST ENMPIKINLI APPRYVMTT TLERTEGLSV LSQAMAVIKE KIEEKRGVFN VQMEPKVVD TDETELARQM ERLERENAEV DGDDDAEEME AKAED</p>
Gene ID	1965
Gene Symbol	EIF2S1
Species	Human

Product Application Details	
Applications	SDS-Page
Recommended Dilutions	SDS-Page

Images

SDS-Page: Recombinant Human eIF2 alpha/EIF2S1 Protein [NBP1-44467] - 15% SDS-Page (3ug)



Publications

Tang Y, Zhang S, Li J et al. ID1 marks the tumorigenesis of pancreatic ductal adenocarcinoma in mouse and human
Scientific reports 2022-08-08 [PMID: 35941362] (PAGE, Human)





Novus Biologicals USA

10730 E. Briarwood Avenue
Centennial, CO 80112
USA
Phone: 303.730.1950
Toll Free: 1.888.506.6887
Fax: 303.730.1966
nb-customerservice@bio-techne.com

Bio-Techne Canada

21 Canmotor Ave
Toronto, ON M8Z 4E6
Canada
Phone: 905.827.6400
Toll Free: 855.668.8722
Fax: 905.827.6402
canada.inquires@bio-techne.com

Bio-Techne Ltd

19 Barton Lane
Abingdon Science Park
Abingdon, OX14 3NB, United Kingdom
Phone: (44) (0) 1235 529449
Free Phone: 0800 37 34 15
Fax: (44) (0) 1235 533420
info.EMEA@bio-techne.com

General Contact Information

www.novusbio.com
Technical Support: nb-technical@bio-techne.com
Orders: nb-customerservice@bio-techne.com
General: novus@novusbio.com

Products Related to NBP1-44467

NBP2-49428PEP	eIF2 alpha/EIF2S1 Recombinant Protein Antigen
NB600-1335	GADD153/CHOP Antibody (9C8)
NBP2-02669	eIF2 alpha/EIF2S1 Antibody (OTI3H4)
NB100-81898	eIF4E [p Ser209] Antibody

Limitations

This product is for research use only and is not approved for use in humans or in clinical diagnosis. Peptides and proteins are guaranteed for 3 months from date of receipt.

For more information on our 100% guarantee, please visit www.novusbio.com/guarantee

Earn gift cards/discounts by submitting a review: www.novusbio.com/reviews/submit/NBP1-44467

Earn gift cards/discounts by submitting a publication using this product:
www.novusbio.com/publications

