

# Product Datasheet

## NKCC2/SLC12A1 Antibody - BSA Free NBP1-44269

Unit Size: 0.1 mg

Store at 4C short term. Aliquot and store at -20C long term. Avoid freeze-thaw cycles.

[www.novusbio.com](http://www.novusbio.com)



[technical@novusbio.com](mailto:technical@novusbio.com)

Protocols, Publications, Related Products, Reviews, Research Tools and Images at:  
[www.novusbio.com/NBP1-44269](http://www.novusbio.com/NBP1-44269)

Updated 9/9/2025 v.20.1

Earn rewards for product  
reviews and publications.

Submit a publication at [www.novusbio.com/publications](http://www.novusbio.com/publications)

Submit a review at [www.novusbio.com/reviews/destination/NBP1-44269](http://www.novusbio.com/reviews/destination/NBP1-44269)



**NBP1-44269**

NKCC2/SLC12A1 Antibody - BSA Free

**Product Information**

<b>Unit Size</b>	0.1 mg
<b>Concentration</b>	1 mg/ml
<b>Storage</b>	Store at 4C short term. Aliquot and store at -20C long term. Avoid freeze-thaw cycles.
<b>Clonality</b>	Polyclonal
<b>Preservative</b>	0.09% Sodium Azide
<b>Isotype</b>	IgG
<b>Purity</b>	Protein A purified
<b>Buffer</b>	PBS, 50% Glycerol

**Product Description**

<b>Description</b>	Novus Biologicals Rabbit NKCC2/SLC12A1 Antibody - BSA Free (NBP1-44269) is a polyclonal antibody validated for use in IHC and WB. All Novus Biologicals antibodies are covered by our 100% guarantee.
<b>Host</b>	Rabbit
<b>Gene ID</b>	6557
<b>Gene Symbol</b>	SLC12A1
<b>Species</b>	Human, Mouse, Rat
<b>Specificity/Sensitivity</b>	Detects approx 160kDa.
<b>Immunogen</b>	Produced against a synthetic peptide mapping to a segment (amino acids 33-55) of the N-terminal tail of rat NKCC2 (antibody designation L224).

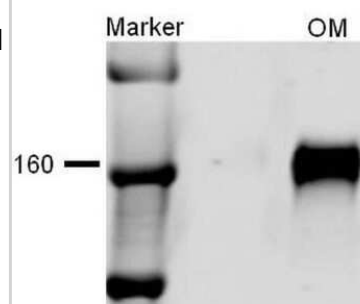
**Product Application Details**

<b>Applications</b>	Western Blot, Immunohistochemistry
<b>Recommended Dilutions</b>	Western Blot 1:1000, Immunohistochemistry 1:10-1:500
<b>Application Notes</b>	1 ug/ml of NKCC2 Antibody was sufficient for detection of NKCC2 in 10 ug of rat kidney tissue lysate by colorimetric immunoblot analysis using Goat anti-rabbit IgG:HRP as the secondary Antibody.

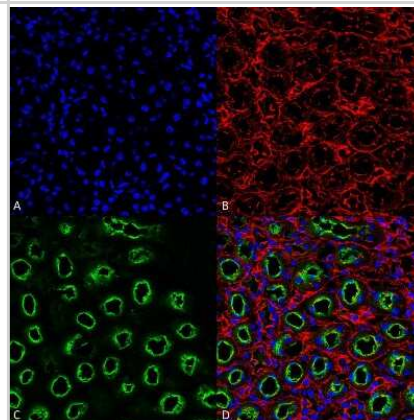


## Images

**Western Blot: NKCC2/SLC12A1 Antibody [NBP1-44269]** - Western blot analysis of Rat kidney tissue lysates showing detection of NKCC2/SLC12A1 protein using Rabbit Anti-NKCC2/SLC12A1 Polyclonal Antibody (NBP1-44269). Primary Antibody: Rabbit Anti-NKCC2/SLC12A1 Polyclonal Antibody (NBP1-44269) at 1:1000.



**Immunohistochemistry: NKCC2/SLC12A1 Antibody [NBP1-44269]** - Immunohistochemistry analysis using Rabbit Anti-NKCC2/SLC12A1 Polyclonal Antibody (NBP1-44269). Tissue: Kidney. Species: Rat. Fixation: Formalin Fixed Paraffin-Embedded. Primary Antibody: Rabbit Anti-NKCC2/SLC12A1 Polyclonal Antibody (NBP1-44269) at 1:25 for 1 hour at RT. Secondary Antibody: Goat Anti-Rabbit IgG: Alexa Fluor 488. Counterstain: Actin-binding Phalloidin-Alexa Fluor 633; DAPI (blue) nuclear stain. Magnification: 63X. (A) DAPI (blue) nuclear stain. (B) Phalloidin Alex Fluor 633 F-Actin stain. (C) NKCC2/SLC12A1 Antibody (D) Composite





### **Novus Biologicals USA**

10730 E. Briarwood Avenue  
Centennial, CO 80112  
USA  
Phone: 303.730.1950  
Toll Free: 1.888.506.6887  
Fax: 303.730.1966  
nb-customerservice@bio-techne.com

### **Bio-Techne Canada**

21 Canmotor Ave  
Toronto, ON M8Z 4E6  
Canada  
Phone: 905.827.6400  
Toll Free: 855.668.8722  
Fax: 905.827.6402  
canada.inquires@bio-techne.com

### **Bio-Techne Ltd**

19 Barton Lane  
Abingdon Science Park  
Abingdon, OX14 3NB, United Kingdom  
Phone: (44) (0) 1235 529449  
Free Phone: 0800 37 34 15  
Fax: (44) (0) 1235 533420  
info.EMEA@bio-techne.com

### **General Contact Information**

[www.novusbio.com](http://www.novusbio.com)  
Technical Support: nb-technical@bio-techne.com  
Orders: nb-customerservice@bio-techne.com  
General: novus@novusbio.com

### **Products Related to NBP1-44269**

---

HAF008	Goat anti-Rabbit IgG Secondary Antibody [HRP]
NB7160	Goat anti-Rabbit IgG (H+L) Secondary Antibody [HRP]
NBP2-24891	Rabbit IgG Isotype Control
H00006557-P01-10ug	Recombinant Human NKCC2/SLC12A1 GST (N-Term) Protein

---

### **Limitations**

This product is for research use only and is not approved for use in humans or in clinical diagnosis. Primary Antibodies are guaranteed for 1 year from date of receipt.

For more information on our 100% guarantee, please visit [www.novusbio.com/guarantee](http://www.novusbio.com/guarantee)

Earn gift cards/discounts by submitting a review: [www.novusbio.com/reviews/submit/NBP1-44269](http://www.novusbio.com/reviews/submit/NBP1-44269)

Earn gift cards/discounts by submitting a publication using this product:  
[www.novusbio.com/publications](http://www.novusbio.com/publications)

