

Product Datasheet

Fc epsilon RI Antibody (AER-37) [FITC] NBP1-43940-100tests

Unit Size: 100 Tests

Store at 4C in the dark.

www.novusbio.com



technical@novusbio.com

Protocols, Publications, Related Products, Reviews, Research Tools and Images at:
www.novusbio.com/NBP1-43940

Updated 10/23/2024 v.20.1

**Earn rewards for product
reviews and publications.**

Submit a publication at www.novusbio.com/publications

Submit a review at www.novusbio.com/reviews/destination/NBP1-43940



NBP1-43940-100tests

Fc epsilon RI Antibody (AER-37) [FITC]

Product Information

Unit Size	100 Tests
Concentration	5 mg/ml
Storage	Store at 4C in the dark.
Clonality	Monoclonal
Clone	AER-37
Preservative	0.09% Sodium Azide
Isotype	IgG2b Kappa
Conjugate	FITC
Purity	Protein A or G purified
Buffer	PBS (pH 7.2) with 0.1% gelatin and 0.2%BSA

Product Description

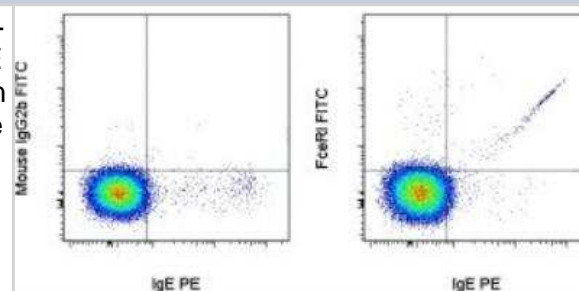
Host	Mouse
Gene ID	2205
Gene Symbol	FCER1A
Species	Human
Reactivity Notes	Use in Human reported in scientific literature (PMID:33741501).
Immunogen	The immunogen for this antibody was FcεRI alpha.

Product Application Details

Applications	Flow Cytometry
Recommended Dilutions	Flow Cytometry 1:10-1:1000
Application Notes	The AER-37 antibody has been tested by flow cytometric analysis of peripheral blood leukocytes. This can be used at less than or equal to 1 ug per test. Cell number should be determined empirically but can range from 10 ⁵ to 10 ⁸ cells/test.

Images

Flow Cytometry: Fc epsilon RI Antibody (AER-37) [FITC] [NBP1-43940] - Staining of normal human peripheral blood cells with Anti-Human IgE PE and Mouse IgG2b K Isotype Control FITC (left) or Anti-Human Fc epsilon Receptor I alpha (FcεR1) FITC (right). Cells in the lymphocyte gate were used for analysis (note: basophils reside in FSC/SSC position of lymphocytes).





Novus Biologicals USA

10730 E. Briarwood Avenue
Centennial, CO 80112
USA
Phone: 303.730.1950
Toll Free: 1.888.506.6887
Fax: 303.730.1966
nb-customerservice@bio-techne.com

Bio-Techne Canada

21 Canmotor Ave
Toronto, ON M8Z 4E6
Canada
Phone: 905.827.6400
Toll Free: 855.668.8722
Fax: 905.827.6402
canada.inquires@bio-techne.com

Bio-Techne Ltd

19 Barton Lane
Abingdon Science Park
Abingdon, OX14 3NB, United Kingdom
Phone: (44) (0) 1235 529449
Free Phone: 0800 37 34 15
Fax: (44) (0) 1235 533420
info.EMEA@bio-techne.com

General Contact Information

www.novusbio.com
Technical Support: nb-technical@bio-techne.com
Orders: nb-customerservice@bio-techne.com
General: novus@novusbio.com

Products Related to NBP1-43940-100tests

NBP1-43317F	Mouse IgG2b Kappa Light Chain Isotype Control (MG2b) [FITC]
NBP2-23043	Recombinant Human Fc epsilon RI His Protein
210-TA-005	TNF-alpha [Unconjugated]
NBL1-10650	Fc epsilon RI Overexpression Lysate

Limitations

This product is for research use only and is not approved for use in humans or in clinical diagnosis. Primary Antibodies are guaranteed for 1 year from date of receipt.

For more information on our 100% guarantee, please visit www.novusbio.com/guarantee

Earn gift cards/discounts by submitting a review: www.novusbio.com/reviews/submit/NBP1-43940

Earn gift cards/discounts by submitting a publication using this product:
www.novusbio.com/publications

