

# Product Datasheet

## GM-CSFR alpha Antibody (4H1) [PE] NBP1-43823-100tests

Unit Size: 100 Tests

Store at 4C in the dark.

[www.novusbio.com](http://www.novusbio.com)



[technical@novusbio.com](mailto:technical@novusbio.com)

Protocols, Publications, Related Products, Reviews, Research Tools and Images at:  
[www.novusbio.com/NBP1-43823](http://www.novusbio.com/NBP1-43823)

Updated 10/23/2024 v.20.1

Earn rewards for product  
reviews and publications.

Submit a publication at [www.novusbio.com/publications](http://www.novusbio.com/publications)

Submit a review at [www.novusbio.com/reviews/destination/NBP1-43823](http://www.novusbio.com/reviews/destination/NBP1-43823)



**NBP1-43823-100tests**

GM-CSFR alpha Antibody (4H1) [PE]

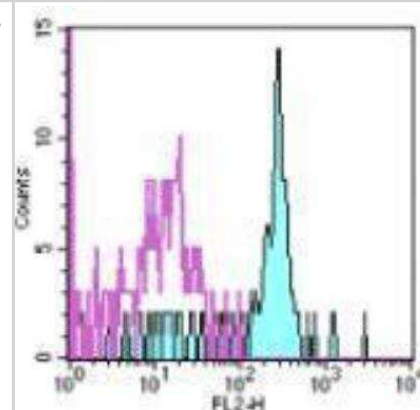
Product Information	
Unit Size	100 Tests
Concentration	5 mg/ml
Storage	Store at 4C in the dark.
Clonality	Monoclonal
Clone	4H1
Preservative	0.09% Sodium Azide
Isotype	IgG1 Kappa
Conjugate	PE
Purity	Protein A or G purified
Buffer	PBS (pH 7.2) with 0.1% gelatin and 0.2% BSA

Product Description	
Host	Mouse
Gene ID	1438
Gene Symbol	CSF2RA
Species	Human
Immunogen	The immunogen for this antibody was CD116.

Product Application Details	
Applications	Flow Cytometry
Recommended Dilutions	Flow Cytometry 1:10-1:1000
Application Notes	The 4H1 antibody has been tested by flow cytometric analysis of human peripheral blood leukocytes. This can be used at less than or equal to 1 ug per test. Cell number should be determined empirically but can range from 10 <sup>5</sup> to 10 <sup>8</sup> cells/test.

**Images**

Flow Cytometry: GM-CSF R alpha Antibody (4H1) [PE] [NBP1-43823] - -  
See Notes





### **Novus Biologicals USA**

10730 E. Briarwood Avenue  
Centennial, CO 80112  
USA  
Phone: 303.730.1950  
Toll Free: 1.888.506.6887  
Fax: 303.730.1966  
nb-customerservice@bio-techne.com

### **Bio-Techne Canada**

21 Canmotor Ave  
Toronto, ON M8Z 4E6  
Canada  
Phone: 905.827.6400  
Toll Free: 855.668.8722  
Fax: 905.827.6402  
canada.inquires@bio-techne.com

### **Bio-Techne Ltd**

19 Barton Lane  
Abingdon Science Park  
Abingdon, OX14 3NB, United Kingdom  
Phone: (44) (0) 1235 529449  
Free Phone: 0800 37 34 15  
Fax: (44) (0) 1235 533420  
info.EMEA@bio-techne.com

### **General Contact Information**

www.novusbio.com  
Technical Support: nb-technical@bio-techne.com  
Orders: nb-customerservice@bio-techne.com  
General: novus@novusbio.com

### **Products Related to NBP1-43823-100tests**

---

NBP1-43319PE-0.5ml	Mouse IgG1 Kappa Isotype Control (P3.6.2.8.1) [PE]
M6000B-1	IL-6 [HRP]
10423-GR-050	GM-CSFR alpha [Unconjugated]
6507-IL-010/CF	IL-4 [Unconjugated]

---

### **Limitations**

This product is for research use only and is not approved for use in humans or in clinical diagnosis. Primary Antibodies are guaranteed for 1 year from date of receipt.

For more information on our 100% guarantee, please visit [www.novusbio.com/guarantee](http://www.novusbio.com/guarantee)

Earn gift cards/discounts by submitting a review: [www.novusbio.com/reviews/submit/NBP1-43823](http://www.novusbio.com/reviews/submit/NBP1-43823)

Earn gift cards/discounts by submitting a publication using this product:  
[www.novusbio.com/publications](http://www.novusbio.com/publications)

