

# Product Datasheet

## Rat anti-Mouse IgM Heavy Chain Secondary Antibody (eB121-15F9) [PE] NBP1-43749-0.1mg

Unit Size: 0.1 mg

Store at 4C in the dark.

[www.novusbio.com](http://www.novusbio.com)



[technical@novusbio.com](mailto:technical@novusbio.com)

Protocols, Publications, Related Products, Reviews, Research Tools and Images at:  
[www.novusbio.com/NBP1-43749](http://www.novusbio.com/NBP1-43749)

Updated 10/23/2024 v.20.1

Earn rewards for product  
reviews and publications.

Submit a publication at [www.novusbio.com/publications](http://www.novusbio.com/publications)

Submit a review at [www.novusbio.com/reviews/destination/NBP1-43749](http://www.novusbio.com/reviews/destination/NBP1-43749)



**NBP1-43749-0.1mg**

Rat anti-Mouse IgM Heavy Chain Secondary Antibody (eB121-15F9) [PE]

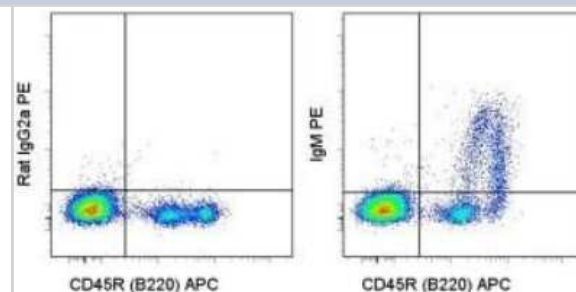
Product Information	
Unit Size	0.1 mg
Concentration	0.2 mg/ml
Storage	Store at 4C in the dark.
Clonality	Monoclonal
Clone	eB121-15F9
Preservative	0.09% Sodium Azide
Isotype	IgG2a Kappa
Conjugate	PE
Purity	Protein A or G purified
Buffer	PBS (pH 7.2) with 0.1% gelatin

Product Description	
Host	Rat
Gene ID	3507
Gene Symbol	IGHM
Species	Mouse
Reactivity Notes	This antibody is reactive to Mouse.
Specificity/Sensitivity	This secondary antibody reacts with the mu heavy chain of mouse IgM. It does not react with other classes of mouse immunoglobulin including IgD, IgG or IgA. IgM is expressed intracellularly, during early stages of B lymphopoiesis, and then on the surface of more mature B cells in the bone marrow and peripheral B cells. Fluorochrome conjugate can be used as a detection secondary for mouse IgM.
Immunogen	Mouse IgM

Product Application Details	
Applications	Flow Cytometry
Recommended Dilutions	Flow Cytometry 1:10-1:1000

**Images**

Flow Cytometry: Rat anti-Mouse IgM Heavy Chain Secondary Antibody (eB121-15F9) [PE] [NBP1-43749] - See notes for image caption





### **Novus Biologicals USA**

10730 E. Briarwood Avenue  
Centennial, CO 80112  
USA  
Phone: 303.730.1950  
Toll Free: 1.888.506.6887  
Fax: 303.730.1966  
nb-customerservice@bio-techne.com

### **Bio-Techne Canada**

21 Canmotor Ave  
Toronto, ON M8Z 4E6  
Canada  
Phone: 905.827.6400  
Toll Free: 855.668.8722  
Fax: 905.827.6402  
canada.inquires@bio-techne.com

### **Bio-Techne Ltd**

19 Barton Lane  
Abingdon Science Park  
Abingdon, OX14 3NB, United Kingdom  
Phone: (44) (0) 1235 529449  
Free Phone: 0800 37 34 15  
Fax: (44) (0) 1235 533420  
info.EMEA@bio-techne.com

### **General Contact Information**

www.novusbio.com  
Technical Support: nb-technical@bio-techne.com  
Orders: nb-customerservice@bio-techne.com  
General: novus@novusbio.com

### **Products Related to NBP1-43749-0.1mg**

---

NB100-524	NOD2 Antibody (2D9) - BSA Free
NBP1-96772	Human IgM Heavy Chain Isotype Control
7268-CT-100	CTLA-4 [Unconjugated]
NB200-541	Complement C4b/d Antibody (16D2)

---

### **Limitations**

This product is for research use only and is not approved for use in humans or in clinical diagnosis. Secondary Antibodies are guaranteed for 1 year from date of receipt.

For more information on our 100% guarantee, please visit [www.novusbio.com/guarantee](http://www.novusbio.com/guarantee)

Earn gift cards/discounts by submitting a review: [www.novusbio.com/reviews/submit/NBP1-43749](http://www.novusbio.com/reviews/submit/NBP1-43749)

Earn gift cards/discounts by submitting a publication using this product:  
[www.novusbio.com/publications](http://www.novusbio.com/publications)

