

Product Datasheet

MCAM/CD146 Antibody (P1H12) - BSA Free NBP1-43346-0.1mg

Unit Size: 0.1 mg

Store at 4C. Do not freeze.

www.novusbio.com



technical@novusbio.com

Publications: 3

Protocols, Publications, Related Products, Reviews, Research Tools and Images at:
www.novusbio.com/NBP1-43346

Updated 10/23/2024 v.20.1

Earn rewards for product
reviews and publications.

Submit a publication at www.novusbio.com/publications

Submit a review at www.novusbio.com/reviews/destination/NBP1-43346



NBP1-43346-0.1mg

MCAM/CD146 Antibody (P1H12) - BSA Free

Product Information	
Unit Size	0.1 mg
Concentration	0.5 mg/ml
Storage	Store at 4C. Do not freeze.
Clonality	Monoclonal
Clone	P1H12
Preservative	0.09% Sodium Azide
Isotype	IgG1 Kappa
Purity	Protein A or G purified
Buffer	PBS (pH 7.2)

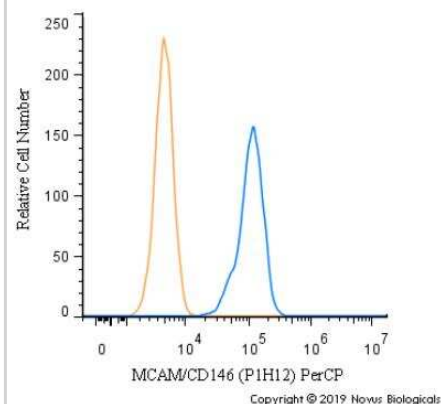
Product Description	
Host	Mouse
Gene ID	4162
Gene Symbol	MCAM
Species	Human, Mouse, Canine, Rabbit, Rat (Negative)
Reactivity Notes	Please note that this antibody is reactive to Mouse and derived from the same host, Mouse. Additional Mouse on Mouse blocking steps may be required for IHC and ICC experiments. Please contact Technical Support for more information.
Immunogen	The immunogen for this antibody was CD146.

Product Application Details	
Applications	Western Blot, Flow Cytometry, Immunohistochemistry, Immunohistochemistry-Frozen, Immunoprecipitation
Recommended Dilutions	Western Blot 1:100-1:2000, Flow Cytometry < = 0.25 ug/10 ⁶ cells in 100 ul, Immunohistochemistry 1:10-1:500, Immunoprecipitation 1:10-1:500, Immunohistochemistry-Frozen 1:10-1:500

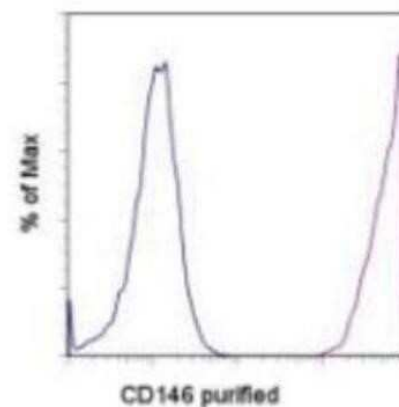


Images

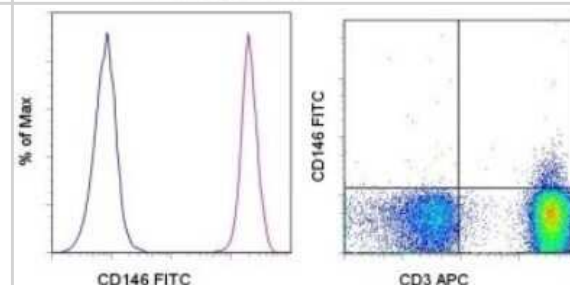
Flow Cytometry: MCAM/CD146 Antibody (P1H12) [NBP1-43346] - A surface stain was performed on SK-MEL-28 cells with MCAM/CD146 Antibody (P1H12) NBP1-43346PCP (blue) and a matched isotype control (orange). Cells were incubated in an antibody dilution of 5 ug/mL for 20 minutes at room temperature. Both antibodies were conjugated to PerCP.



Flow Cytometry: MCAM/CD146 Antibody (P1H12) [NBP1-43346] - Staining of Human Umbilical Vein Endothelial Cells (HUVEC) with 0.125 ug of Mouse IgG1 K Isotype Control Purified (blue histogram) or 0.125 ug of Anti-CD146 Purified (purple histogram) followed by F(ab')₂ Anti-Mouse IgG PE. Total viable cells were used for analysis.



Flow Cytometry: MCAM/CD146 Antibody (P1H12) [NBP1-43346] - Analysis using the FITC conjugate of NBP1-43346. Left: Staining of Human Umbilical Vein Endothelial Cells (HUVEC) with Mouse IgG1 K Isotype Control FITC (blue histogram) or Anti-CD146 FITC (purple histogram). Right: Staining of normal human peripheral blood cells with Anti-Human CD3 APC and Anti-CD146 FITC.



Publications

Takahashi T, Sato F, Shinkai K Effects of Antimicrobial Photodynamic Therapy Used to Sterilize Carious Dentin on Rat Dental Pulp Tissue Thesis 2023-10-23 [PMID: 38132421] (IHC-P, Rat)

Details:
Dilution 1:50

Mai J, Hu Q et al. Dyssynchronous pacing triggers endothelial-mesenchymal transition through heterogeneity of mechanical stretch in a canine model. *Circ J* 2014-07-11 [PMID: 25373595] (FLOW, Canine)

Touil Y, Segaula Z, Thuru X et al. Aggressiveness potential of spontaneous canine mucosal melanoma can dictate distinct cancer stem cell compartment behaviors in regard to their initial size and expansion abilities *Stem Cells Dev.* 2020-05-18 [PMID: 32423311] (IF/IHC, Canine)



Novus Biologicals USA

10730 E. Briarwood Avenue
Centennial, CO 80112
USA
Phone: 303.730.1950
Toll Free: 1.888.506.6887
Fax: 303.730.1966
nb-customerservice@bio-techne.com

Bio-Techne Canada

21 Canmotor Ave
Toronto, ON M8Z 4E6
Canada
Phone: 905.827.6400
Toll Free: 855.668.8722
Fax: 905.827.6402
canada.inquires@bio-techne.com

Bio-Techne Ltd

19 Barton Lane
Abingdon Science Park
Abingdon, OX14 3NB, United Kingdom
Phone: (44) (0) 1235 529449
Free Phone: 0800 37 34 15
Fax: (44) (0) 1235 533420
info.EMEA@bio-techne.com

General Contact Information

www.novusbio.com
Technical Support: nb-technical@bio-techne.com
Orders: nb-customerservice@bio-techne.com
General: novus@novusbio.com

Products Related to NBP1-43346-0.1mg

HAF007	Goat anti-Mouse IgG Secondary Antibody [HRP]
NB720-B	Rabbit anti-Mouse IgG (H+L) Secondary Antibody [Biotin]
NBP1-43319-0.5mg	Mouse IgG1 Kappa Isotype Control (P3.6.2.8.1)
NBP1-88132PEP	MCAM/CD146 Recombinant Protein Antigen

Limitations

This product is for research use only and is not approved for use in humans or in clinical diagnosis. Primary Antibodies are guaranteed for 1 year from date of receipt.

For more information on our 100% guarantee, please visit www.novusbio.com/guarantee

Earn gift cards/discounts by submitting a review: www.novusbio.com/reviews/submit/NBP1-43346

Earn gift cards/discounts by submitting a publication using this product:
www.novusbio.com/publications

