

# Product Datasheet

## Mouse IgG1 Kappa Isotype Control (P3.6.2.8.1) [Allophycocyanin] NBP1-43319APC-0.5ml

Unit Size: 0.5 ml

Store at 4C in the dark.

[www.novusbio.com](http://www.novusbio.com)



[technical@novusbio.com](mailto:technical@novusbio.com)

**Reviews: 1**

Protocols, Publications, Related Products, Reviews, Research Tools and Images at:  
[www.novusbio.com/NBP1-43319APC](http://www.novusbio.com/NBP1-43319APC)

Updated 10/23/2024 v.20.1

Earn rewards for product  
reviews and publications.

Submit a publication at [www.novusbio.com/publications](http://www.novusbio.com/publications)

Submit a review at [www.novusbio.com/reviews/destination/NBP1-43319APC](http://www.novusbio.com/reviews/destination/NBP1-43319APC)



**NBP1-43319APC-0.5ml**

Mouse IgG1 Kappa Isotype Control (P3.6.2.8.1) [Allophycocyanin]

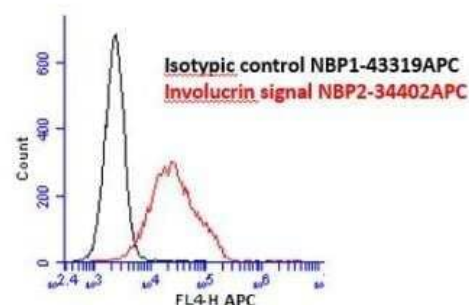
Product Information	
Unit Size	0.5 ml
Concentration	Please contact technical services for concentration.
Storage	Store at 4C in the dark.
Clonality	Monoclonal
Clone	P3.6.2.8.1
Preservative	0.05% Sodium Azide
Isotype	IgG1 Kappa
Conjugate	Allophycocyanin
Purity	Affinity purified
Buffer	PBS

Product Description	
Description	This Mouse IgG1 Kappa immunoglobulin is useful as an isotype control.
Host	Mouse
Species	Mouse

Product Application Details	
Applications	Western Blot, Flow Cytometry, Immunocytochemistry/ Immunofluorescence, Immunohistochemistry, Immunoprecipitation, Control
Recommended Dilutions	Western Blot 1:100 - 1:2000, Flow Cytometry 1:10 - 1:1000, Immunohistochemistry, Immunocytochemistry/ Immunofluorescence, Immunoprecipitation 1:10 - 1:500, Control
Application Notes	Tested for Flow analysis on normal human peripheral blood cells and mouse spleen cells. Use the isotype control at the same concentration as the experimental antibody. Optimal dilution of this antibody should be experimentally determined.

**Images**

Flow Cytometry: Mouse IgG1 Kappa Isotype Control (P3.6.2.8.1) [Allophycocyanin] [NBP1-43319APC] - Analysis of Involucrin signal in human keratinocytes. Red: anti-IVL antibody. BLACK: Isotype control NBP1-43319APC at 1:100. Image from verified customer review.





### **Novus Biologicals USA**

10730 E. Briarwood Avenue  
Centennial, CO 80112  
USA  
Phone: 303.730.1950  
Toll Free: 1.888.506.6887  
Fax: 303.730.1966  
nb-customerservice@bio-techne.com

### **Bio-Techne Canada**

21 Canmotor Ave  
Toronto, ON M8Z 4E6  
Canada  
Phone: 905.827.6400  
Toll Free: 855.668.8722  
Fax: 905.827.6402  
canada.inquires@bio-techne.com

### **Bio-Techne Ltd**

19 Barton Lane  
Abingdon Science Park  
Abingdon, OX14 3NB, United Kingdom  
Phone: (44) (0) 1235 529449  
Free Phone: 0800 37 34 15  
Fax: (44) (0) 1235 533420  
info.EMEA@bio-techne.com

### **General Contact Information**

www.novusbio.com  
Technical Support: nb-technical@bio-  
techne.com  
Orders: nb-customerservice@bio-techne.com  
General: novus@novusbio.com

### **Limitations**

This product is for research use only and is not approved for use in humans or in clinical diagnosis. Isotype Controls are guaranteed for 1 year from date of receipt.

For more information on our 100% guarantee, please visit [www.novusbio.com/guarantee](http://www.novusbio.com/guarantee)

Earn gift cards/discounts by submitting a review: [www.novusbio.com/reviews/submit/NBP1-43319APC](http://www.novusbio.com/reviews/submit/NBP1-43319APC)

Earn gift cards/discounts by submitting a publication using this product:  
[www.novusbio.com/publications](http://www.novusbio.com/publications)

