

# Product Datasheet

## IgM Antibody (II/41) - BSA Free NBP1-43303-0.5mg

Unit Size: 0.5 mg

Store at 4C. Do not freeze.

[www.novusbio.com](http://www.novusbio.com)



[technical@novusbio.com](mailto:technical@novusbio.com)

Protocols, Publications, Related Products, Reviews, Research Tools and Images at:  
[www.novusbio.com/NBP1-43303](http://www.novusbio.com/NBP1-43303)

Updated 10/23/2024 v.20.1

Earn rewards for product  
reviews and publications.

Submit a publication at [www.novusbio.com/publications](http://www.novusbio.com/publications)

Submit a review at [www.novusbio.com/reviews/destination/NBP1-43303](http://www.novusbio.com/reviews/destination/NBP1-43303)



**NBP1-43303-0.5mg**

IgM Antibody (II/41) - BSA Free

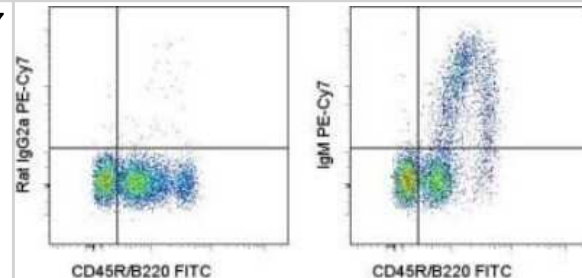
Product Information	
Unit Size	0.5 mg
Concentration	0.5 mg/ml
Storage	Store at 4C. Do not freeze.
Clonality	Monoclonal
Clone	II/41
Preservative	0.09% Sodium Azide
Isotype	IgG2a Kappa
Purity	Protein A or G purified
Buffer	PBS (pH 7.2)

Product Description	
Host	Rat
Gene ID	3507
Gene Symbol	IGHM
Species	Mouse
Reactivity Notes	This antibody is reactive to Mouse.
Immunogen	The immunogen for this antibody was IgM.

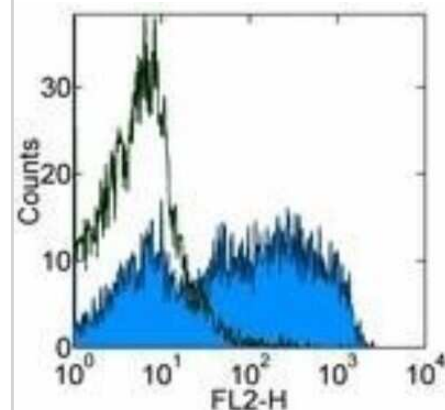
Product Application Details	
Applications	ELISA, Flow Cytometry, Immunohistochemistry, Immunohistochemistry-Frozen
Recommended Dilutions	Flow Cytometry, ELISA, Immunohistochemistry, Immunohistochemistry-Frozen
Application Notes	The II/41 antibody has been tested by flow cytometric analysis of mouse spleen cell suspension. This can be used at less than or equal to 1 ug per test. Cell number should be determined empirically but can range from 10 <sup>5</sup> to 10 <sup>8</sup> cells/test.

**Images**

Flow Cytometry: IgM Antibody (II/41) [NBP1-43303] - Analysis of PE/Cy7 conjugate of NBP1-43303. Staining of C57BL/6 bone marrow cells with Anti-Human/Mouse CD45R (B220) FITC and 0.06 micrograms of Rat IgG2a ? Isotype Control PE-Cy7 (left) or 0.06 micrograms of Anti-Mouse IgM PE-Cy7 (right). Cells in the ly



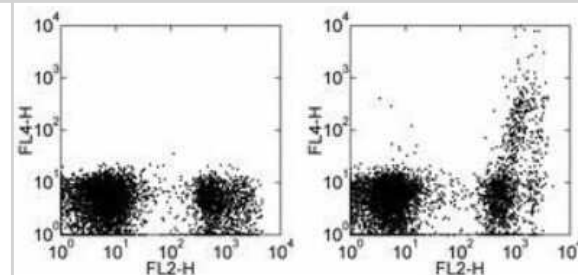
Flow Cytometry: IgM Antibody (II/41) [NBP1-43303] - Staining of C57BL/6 splenocytes with 0.5 ug of Rat IgG2a kappa Isotype Control Purified (open histogram) or 0.5 ug of Anti-Mouse IgM Purified (filled histogram) followed by Anti-Rat IgG Biotin and Streptavidin PE. Total viable cells were used for analysis.



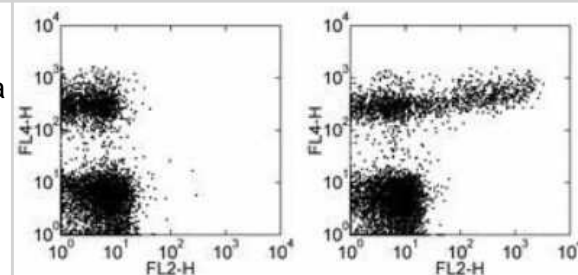
Flow Cytometry: IgM Antibody (II/41) [NBP1-43303] - Analysis of Allophycocyanin conjugate of NBP1-43303. Staining of C57Bl/6 bone marrow cells with Anti-Human/Mouse CD45R (B220) FITC and 0.125 ug of Rat IgG2a K Isotype Control APC (left) or 0.125 ug of Anti-Mouse IgM APC (right). Cells in the small scatter



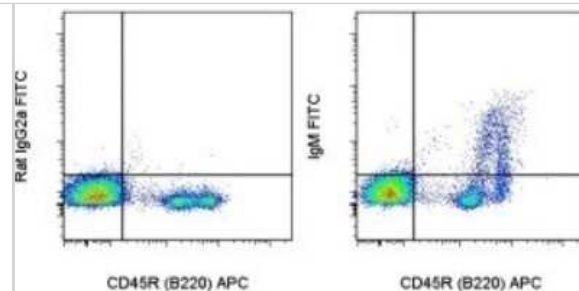
Flow Cytometry: IgM Antibody (II/41) [NBP1-43303] - Analysis of Allophycocyanin conjugate of NBP1-43303. Staining of C57Bl/6 bone marrow cells with Anti-Human/Mouse CD45R (B220) FITC and 0.125 ug of Rat IgG2a K Isotype Control APC (left) or 0.125 ug of Anti-Mouse IgM APC (right). Cells in the small scatter



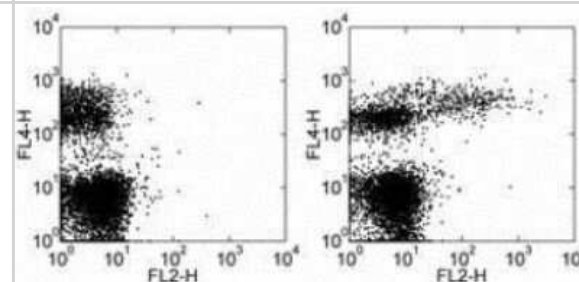
Flow Cytometry: IgM Antibody (II/41) [NBP1-43303] - Analysis of Biotin conjugate of NBP1-43303. Staining of C57BL/6 bone marrow cells with Anti-Human/Mouse CD45R (B220) APC and 0.06 ug of Rat IgG2a kappa Isotype Control Biotin (left) or 0.06 ug of Anti-Mouse IgM Biotin (right) followed by Streptavidin PE .



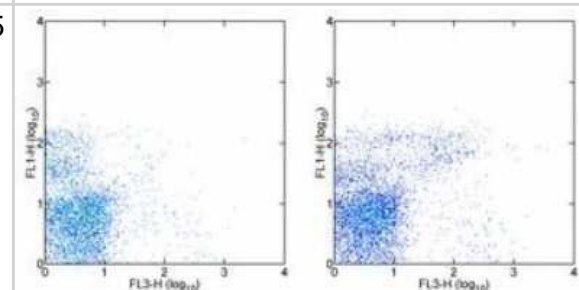
Flow Cytometry: IgM Antibody (II/41) [NBP1-43303] - Analysis of FITC conjugate of NBP1-43303. Staining of C57BL/6 bone marrow cells with Anti-Human/Mouse CD45R (B220) APC and 0.125 ug of Rat IgG2a K Isotype Control FITC (left) or 0.125 ug of Anti-Mouse IgM FITC (right). Total viable cells were used for ana



Flow Cytometry: IgM Antibody (II/41) [NBP1-43303] - Analysis of PE conjugate of NBP1-43303. The II/41 antibody has been tested by flow cytometric mouse spleen cell suspension. This can be used at less than or equal to 1 ug per test. Cell number should be determined empirically but can range from  $10^5$  to  $10^6$



Flow Cytometry: IgM Antibody (II/41) [NBP1-43303] - Analysis of PE/Cy5 conjugate of NBP1-43303. Staining of C57Bl/6 bone marrow cells with Anti-Human/Mouse CD45R (B220) FITC and 0.06 ug of Rat IgG2a Isotype Control PE-Cy5 (left) or 0.06 ug of Anti-Mouse IgM PE-Cy5 (right). Total viable cells were used for





### **Novus Biologicals USA**

10730 E. Briarwood Avenue  
Centennial, CO 80112  
USA  
Phone: 303.730.1950  
Toll Free: 1.888.506.6887  
Fax: 303.730.1966  
nb-customerservice@bio-techne.com

### **Bio-Techne Canada**

21 Canmotor Ave  
Toronto, ON M8Z 4E6  
Canada  
Phone: 905.827.6400  
Toll Free: 855.668.8722  
Fax: 905.827.6402  
canada.inquires@bio-techne.com

### **Bio-Techne Ltd**

19 Barton Lane  
Abingdon Science Park  
Abingdon, OX14 3NB, United Kingdom  
Phone: (44) (0) 1235 529449  
Free Phone: 0800 37 34 15  
Fax: (44) (0) 1235 533420  
info.EMEA@bio-techne.com

### **General Contact Information**

www.novusbio.com  
Technical Support: nb-technical@bio-techne.com  
Orders: nb-customerservice@bio-techne.com  
General: novus@novusbio.com

### **Products Related to NBP1-43303-0.5mg**

---

HAF005	Goat anti-Rat IgG Secondary Antibody [HRP]
NBP1-75398	Goat anti-Rat IgG (H+L) Secondary Antibody (Pre-adsorbed)
NBP1-43321-0.5mg	Rat IgG2a Kappa Light Chain Isotype Control (R2a)
NBP1-42995	IgM Antibody (II/41) [Allophycocyanin]

---

### **Limitations**

This product is for research use only and is not approved for use in humans or in clinical diagnosis. Primary Antibodies are guaranteed for 1 year from date of receipt.

For more information on our 100% guarantee, please visit [www.novusbio.com/guarantee](http://www.novusbio.com/guarantee)

Earn gift cards/discounts by submitting a review: [www.novusbio.com/reviews/submit/NBP1-43303](http://www.novusbio.com/reviews/submit/NBP1-43303)

Earn gift cards/discounts by submitting a publication using this product:  
[www.novusbio.com/publications](http://www.novusbio.com/publications)

